

WORKTECH™ Melbourne

WORK / WORKPLACE / TECHNOLOGY / INNOVATION

EXPLORE THE FUTURE OF WORK AND THE WORKPLACE

AMDC, SWINBURNE UNIVERSITY OF TECHNOLOGY

TUESDAY 30TH JUNE

09:00 - 17:00

HOST PARTNER



GOLD SPONSOR



BRONZE SPONSOR



BESPOKE SPONSORS



NURA • SPACE

SUPPORTED BY





Isabel Dewhurst-Marks

Managing Director,
WORKTECH Events

A warm welcome to WORKTECH26 Melbourne

WORKTECH is the original conference for all those involved in the future of work and the workplace as well as real estate, technology, and innovation.

As organisations across Australia navigate the next phase of work, the conversation is becoming more nuanced. It is no longer just about asking what's next for the workplace? It is about how to unlock greater value from people, places and technology – and how every workplace decision can work harder.

This is the lens shaping WORKTECH26 Melbourne. Hosted at Swinburne University of Technology, this year's programme is grounded in the realities organisations are facing today, while looking ahead to what comes next.

Across the agenda, we will explore the rise of the performance workplace, the shift from AI experimentation to practical capability, the role of workplace data in better decision-making, the evolution of hybrid and tech-enabled leadership, and the importance of designing places that strengthen culture, connection and long-term performance.

We look forward to welcoming you for a day of insight, debate and inspiration.

Warmest regards,
Isabel Dewhurst-Marks

CONTENTS



SPEAKERS



SESSIONS



CONFERENCE AGENDA



VENUE



WHO ATTENDS



KEY INFORMATION

MEET THE SPEAKERS

WORKTECH26 Melbourne will attract some of the biggest and brightest names to debate, discuss, and divulge the latest thinking on the future of work and the workplace.

The conference will feature leading international thinkers from industry and academia. Our speakers represent some of the world's biggest brands and best universities and research departments, alongside radical visionaries from new innovative organisations.

Through interdisciplinary speakers and learning experience, we focus on bringing cutting edge ideas and inspiration to the workplace community to enhance creativity and move thinking forward. Instead of focusing on peer to peer innovation through imitation, we aim to curate a unique programme, bringing together experts in the fields of people, place and technology and relevant adjacencies to reflect on the future of work and workplace.

Alongside the conference series, the WORKTECH Academy knowledge hub explores the future of work through six key themes: people, place, technology, design, culture and innovation. Creating leading commentary, research and publications that places scientific research at the heart of key business problems. www.worktechacademy.com

Full list of speakers

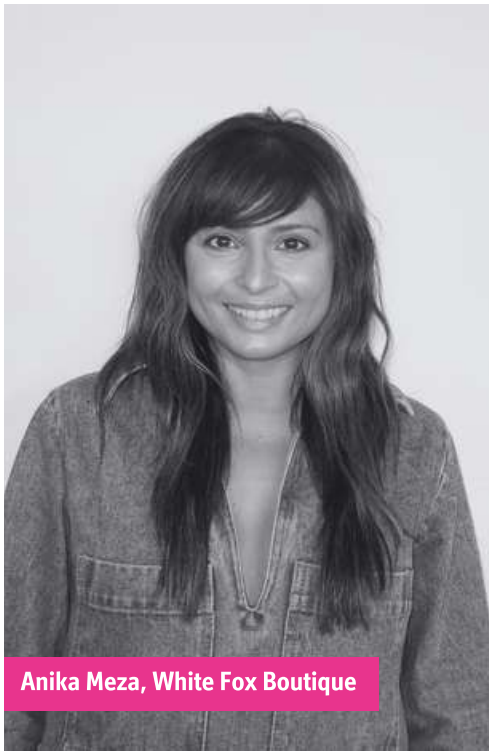
John Berkis AGL
Luke Bettles Xero
Lynette Caruso Australian National University
Dr. Agustin Chevez aChevez Advisory
Matthew Clugston Presynct
Andrew Conquest EY
Aurelio David LinkedIn
Bridgette Engeler Swinburne University of Technology
Angela Ferguson NeuroHaven Consulting
Travis Foster Royal Automobile Club of Western Australia
Tam Galahena Enble AI
Kate Gibson PMG Group
Annabel Khoo Athena Blue Global
Anika Meza White Fox Boutique
Rizvi Mridha Hampr
Dr. Hossein Rizeei McGregor Coxall
Marcus Rose Valeo Technology
Geoff Sloan Sonic Healthcare
Heidi Smith Gray Puksand
Sue Solly Swinburne University of Technology



Sue Solly, Swinburne University of Technology



Aurelio David, LinkedIn



Anika Meza, White Fox Boutique



Dr. Hossein Rizeei, McGregor Coxall



Lynette Caruso, Australian National University



Travis Foster, Royal Automobile Club of Western Australia



John Berkis, AGL



Geoff Sloan, Sonic Healthcare



Bridgette Engeler, Swinburne University of Technology

SESSION HIGHLIGHTS



The future of work and the workplace is on everyone's agenda. This event brings thought leaders together to share cutting edge ideas on the future, from both a people, place, and technology perspective. It will allow an understanding of the key drivers of change and enablers of innovation that will shape how, where and when work takes place.

Key themes we will be discussing at this event include:

KEY THEMES

WHAT THE OFFICE MUST PROVE IN 2026

INTELLIGENCE IN PRACTICE

EVIDENCE AND INSTINCT

DESIGNING FOR DIFFERENCE

FROM HUMAN CONNECTION TO FUTURE PLACES

The Performance Imperative: What the Office Must Prove in 2026

As expectations of the workplace continue to evolve, physical space is under pressure to demonstrate its value – not just as a place to work, but as infrastructure for organisational performance.

Intelligence in Practice

AI, analytics, digital twins, and intelligent systems are rapidly changing how workplaces are planned, managed, and experienced. But the real challenge is no longer simply accessing the technology – it is knowing how to use it well.

Evidence and Instinct

Organisations are collecting more workplace data than ever before, yet decisions are still often shaped by instinct, precedent, stakeholder pressure, or familiar design patterns. As evidence becomes more available, the question is whether it is genuinely improving outcomes – or simply reinforcing what organisations already do.

Designing for Difference

As AI and robotics reshape work, the human role in the workplace becomes more important, not less. The office is increasingly valued as a place for connection, culture, collaboration, learning, and shared experience.

From Human Connection to Future Places

The workplace is becoming a more connected ecosystem – linking physical environment, digital infrastructure, organisational identity, employee experience, and long-term business performance.

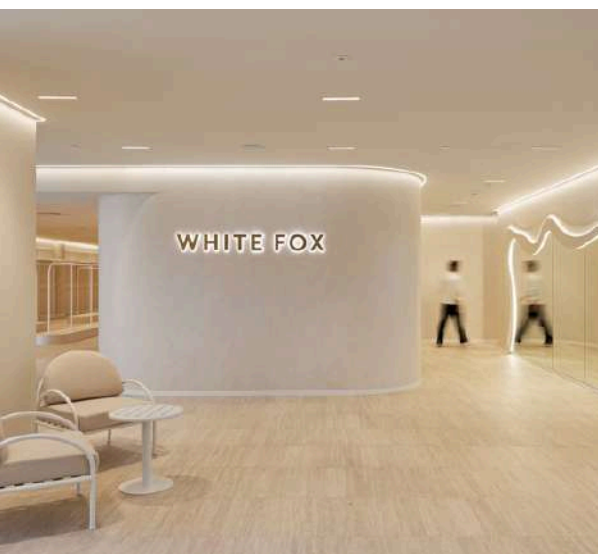


Futures by Design: Human–Robot Collaboration at Work **Bridgette Engeler, Senior Lecturer, Entrepreneurship and Innovation, Professional Futurist and Foresight Practitioner, Swinburne University and Sue Solly, Industry Lead Workplace Innovations, Swinburne University of Technology**

This futuring workshop uses design-led thinking and prospection to imagine how emerging possibilities may shape tomorrow's workplace—and how choices made now can influence what unfolds next. Through speculative design and core foresight methods, participants will explore how robotics could become embedded in everyday office environments, not as novelty but as normal practice. The session invites reflection on how this shift may redefine work patterns, human–machine collaboration, and the lived experience of the workplace, supporting more intentional and future-responsive design decisions.

Hybrid Work: Working together and apart **Lynette Caruso, PhD Candidate, Australian National University**

Hybrid work is no longer an experiment, but many teams are still being managed with habits designed for office-based work. Drawing on current research into high-performing, healthy and sustainable hybrid teams, this session offers practical guidance for managers and workplace leaders navigating the post-hybrid reality. Lynette Caruso will explore what needs to change in communication, collaboration, team cohesion and technology use — and what organisations can do to create the culture, tools and workplace settings that help hybrid teams perform.



Workplace Relevance in a Youth Driven Brand: Inside White Fox's New HQ Ecosystem

Kate Gibson, Director – Clients & Strategy, PMG Group and Anika Meza, Head of People & Culture, White Fox Boutique

White Fox Boutique – Australia's globally ascending Gen Z fashion brand – has just moved into a purpose-built 13,000sqm workplace precinct in Sydney. This session offers a rare inside look at how a youth-driven, multi-million social media brand translates its identity, culture, and ambition into a physical workplace ecosystem. Kate Gibson (PMG Group, workplace strategy lead) and Anika Meza (White Fox, Head of People & Culture) reveal the unexpected lessons, the bold people and brand-led design decisions, and the early results for talent attraction and retention.

CONFERENCE BROCHURE

VIRTUAL SESSION | WORKPLACE TOURS

MONDAY 29TH JUNE | VIRTUAL SESSION AND AUDIENCE Q&A

10:00 - 11:00 | LINKEDIN LIVE & INTERACTIVE: AI-DRIVEN WORKPLACE DESIGN: HOW AI IS SHAPING THE TEAM DYNAMICS AND THE FUTURE OF COLLABORATION

Aurelio David, Senior Manager,
Workplace Research and
Experimentation, LinkedIn



As artificial intelligence reshapes the nature of work, LinkedIn's Workplace team is advancing its flexible workplace strategy by reimagining how physical space supports emerging forms of collaboration. This session will present insights from recent research, including 40 leadership interviews, and findings from an 11-week experiment designed to test dedicated, AI-embedded environments for small, autonomous, cross-functional teams ("pods").

The "Pod Work Area" pilot at LinkedIn's headquarters assigned two pods (9 and 13 members) to dedicated zones with sit-stand desks, collaborative spaces, and Agile Project Rooms equipped with agentic technology. Using surveys, interviews, observations, and simulations, the pilot explored how proximity, space design, and embedded AI help close the gap between decision-making and execution while fostering performance and psychological safety.

This talk offers a glimpse into how LinkedIn—operating in 35+ global offices with 25,000+ employees—is preparing for a future where collaboration is faster, smarter, and more human.

13:00 - 13:30 | FACTORY OF THE FUTURE TOUR AT SWINBURNE



Swinburne's Factory of the Future (FoF) is a leading digital manufacturing and innovation centre showcasing how advanced technologies are transforming physical workplaces.

The FoF offers a compelling example of the future of work beyond the office- where physical space, digital systems, and workforce capability come together to drive productivity, resilience, and innovation.

During this guided tour, participants will experience a live cyber-physical production system featuring robotics and human-machine collaboration, automated quality inspection, autonomous logistics, additive manufacturing, AI workstations, and other Industry 4.0 technologies enabling real-time, data-driven decision-making.

14:00 - 15:00 | VIRTUAL UNIVERSE TOUR AT SWINBURNE



Step inside one of Australia's newest immersive research environments at Swinburne's Virtual Universe — officially launched in May 2026 and available exclusively to WORKTECH Melbourne delegates.

This cutting-edge facility combines advanced visualisation, simulation and interactive technologies to explore how people may work, learn and collaborate in the future. For workplace leaders, it offers a rare opportunity to experience how immersive environments, digital twins and spatial computing could influence workplace design, decision-making and human experience in the years ahead.

As organisations rethink the relationship between physical and digital space, this is a chance to see future-facing innovation up close — while it's still hot off the press.

TUESDAY 30TH JUNE | CONFERENCE DAY AT SWINBURNE UNIVERSITY OF TECHNOLOGY

09:00 | CONFERENCE OPENS

09:30 | CHAIRPERSON'S OPENING REMARKS & WELCOME ADDRESS

Sue Solly, Industry Lead Workplace Innovations, Swinburne University of Technology
Annabel Khoo, Global Strategy & Change Lead, Athena Blue Global



09:40 | WELCOME TO SWINBURNE UNIVERSITY

Sue Solly, Industry Lead Workplace Innovations, Swinburne University of Technology



09:45 | BIGGEST WORKPLACE CHALLENGES - AUDIENCE INTERACTION



THEME: REFRAMING THE OFFICE

What must the office prove now? Exploring how workplace can unlock value across people, place, culture, collaboration and organisational performance.

09:50 | EXPERT PANEL: THE OFFICE REIMAGINED: DESIGNING FOR CONNECTION IN AN AI WORLD

Moderator: Heidi Smith, Lead Partner (VIC), Gray Puksand
Rizvi Mridha, Co-founder, Hampr
Geoff Sloan, Head of Property, Sonic Healthcare
John Berkis, Head Of Property And Security Services, AGL
Luke Bettles, Workplace Operations Manager - APAC, Xero

The role of the office is shifting from a place of individual productivity to one centred on interaction, connection and culture. This panel brings together thought leaders to explore how workplaces are being intentionally designed as social environments—where collaboration is engineered, not left to chance, and where shared experiences drive engagement and innovation. Looking ahead, the discussion will challenge whether this shift could spark a new renaissance of the office, evolving into a high-energy hub for human creativity in an AI-driven world.



10:25 | HYBRID TEAMS THAT WORK: PRACTICAL LESSONS FOR LEADING TOGETHER AND APART

Lynette Caruso, PhD Candidate, Australian National University



Hybrid work is no longer an experiment, but many teams are still being managed with habits designed for office-based work. Drawing on current research into high-performing, healthy and sustainable hybrid teams, this session offers practical guidance for managers and workplace leaders navigating the post-hybrid reality. Lynette Caruso will explore what needs to change in communication, collaboration, team cohesion and technology use — and what organisations can do to create the culture, tools and workplace settings that help hybrid teams perform.

10:50 | COFFEE & NETWORKING BREAK

11:25 | AUDIENCE INTERACTION



THEME: EVIDENCE, INSTINCT AND DESIGN DIFFERENCE

Using workplace, building and experience data to challenge assumptions, inform strategy and close the gap between insight and action.

11:30 | EXPERT PANEL: THE EVIDENCE GAP: DATA, EXPERIENCE AND WORKPLACE DECISIONS

Moderator: Matthew Clugston, Senior Workplace Strategy & Change Consultant, Presynct
Andrew Conquest, Asia Pacific Strategy and Execution Leader, EY
Travis Foster, Head of Property and Facilities, Royal Automobile Club of Western Australia
Lilli Jagger, Head of Growth, AUNZ, Nura Space

Organisations are collecting more workplace data than ever before - from building management systems and environmental sensors to utilisation platforms and employee experience tools. Yet many are still grappling with how effectively this information is shaping workplace decisions. This panel will explore how organisations are beginning to connect these previously separate data streams, linking operational building data with workplace insights to better understand how environments perform. The discussion will examine where evidence is genuinely informing strategy, where decisions are still driven by narrative or instinct, and how organisations can bridge the gap between data, organisational storytelling, and the lived experience of employees in the workplace.



NURA • SPACE

12:10 | SAMENESS BY DESIGN

Dr. Agustin Chevez, Workplace Provocateur, aChevez Advisory



Do workplaces increasingly look alike? If so, what does this mean for how design firms compete with one another, and how can innovation thrive in such a context? Drawing on analysis of competitive networks and industry interviews, this session examines the systemic drivers of normative and mimetic pressures shaping workplace design, within tendering processes and design awards. Rather than offering a critique of aesthetics, Sameness by Design reframes similarity as a structural market outcome with advantages and risks. Attendees will learn to recognise competitive convergence and respond strategically by differentiating, innovating, or deliberately leveraging sameness.

12:50 | FUTURES BY DESIGN: HUMAN-ROBOT COLLABORATION AT WORK

Bridgette Engeler, Foresight Practitioner and Futures Lead, Swinburne Futures Catalyst
Sue Solly, Industry Lead Workplace Innovations, Swinburne University of Technology



This futuring workshop uses design-led thinking and prospection to imagine how emerging possibilities may shape tomorrow's workplace—and how choices made now can influence what unfolds next. Through speculative design and core foresight methods, participants will explore how robotics could become embedded in everyday office environments, not as novelty but as normal practice. The session invites reflection on how this shift may redefine work patterns, human-machine collaboration, and the lived experience of the workplace, supporting more intentional and future-responsive design decisions.

13:30 | LUNCH AND NETWORKING BREAK

14:20 | AUDIENCE INTERACTION



THEME: PRACTICAL INTELLIGENCE AND FUTURE PLACES

Moving beyond AI experimentation to real capability – from workplace workflows and analytics to digital twins, scenario planning and smarter decisions.

14:25 | FROM AI ACCESS TO AI ADOPTION: PRACTICAL WORKFLOWS FOR WORKPLACE LEADERS

Tam Galahena, Founder, Enble AI



Many organisations have given teams access to AI tools, but far fewer have turned that access into meaningful adoption, productivity or better decision-making. This practical, demo-led session shows workplace, property and people leaders what effective AI use looks like in real workflows – from analysing space and facilities data to improving communication, risk review and planning. Tam Galahena will share a simple framework for identifying where AI can create value, and what to prioritise first.

15:00 | THE SPACE THAT SHAPES THE MIND: HOW ADAPTIVE SOUND TRANSFORMS WORKPLACE PERFORMANCE

Marcus Rose, CEO, Valeo Technology



Your mindset doesn't exist in a vacuum, your environment shapes it. In this session, Marcus Rose, CEO of Valeo Technology, reveals how Moodsonic adaptive sound scaping and other sensory technology is transforming how workplaces feel, function, and perform. Drawing on award-winning projects across APAC, Marcus explores the neuroscience of sound, how intelligent sensory systems respond in real time to support focus, collaboration, and wellbeing, and why sound is the most overlooked and most powerful dimension of workplace design.

15:15 | DIGITAL TWINS, SUITABILITY MODELLING, AND SCENARIO PLANNING FOR FUTURE PLACES

Dr. Hossein Rizeei, Managing Principal
Biourbanism Lab, McGregor Coxall



This session presents applied geospatial intelligence workflows through real projects, including the 3d model of digital twin, plant intelligence portals, and large-scale suitability and scenario modelling. It demonstrates how GeoAI, GIS, and digital twins move beyond visualisation into decision-support systems, enabling site selection, climate-responsive planning, and evidence-based design. The session will unpack how spatial data is structured, analysed, and translated into actionable insights, supporting planners, designers, and asset owners in making faster, more informed, and future-ready decisions

15:40 | COFFEE AND NETWORKING BREAK

16:10 | WORKPLACE RELEVANCE IN A YOUTH DRIVEN BRAND: INSIDE WHITE FOX'S NEW HQ ECOSYSTEM

Anika Meza, Head of People & Culture,
White Fox
Kate Gibson, Director Clients &
Strategy, PMG Group



White Fox Boutique – Australia's globally ascending Gen Z fashion brand – has just moved into a purpose-built 13,000sqm workplace precinct in Sydney. This session offers a rare inside look at how a youth-driven, multi-million social media brand translates its identity, culture, and ambition into a physical workplace ecosystem. Kate Gibson (PMG Group, workplace strategy lead) and Anika Meza (White Fox, Head of People & Culture) reveal the unexpected lessons, the bold people and brand-led design decisions, and the early results for talent attraction and retention.

16:40 | AUDIENCE INTERACTION



16:45 | CHAIRPERSON'S CLOSING REMARKS

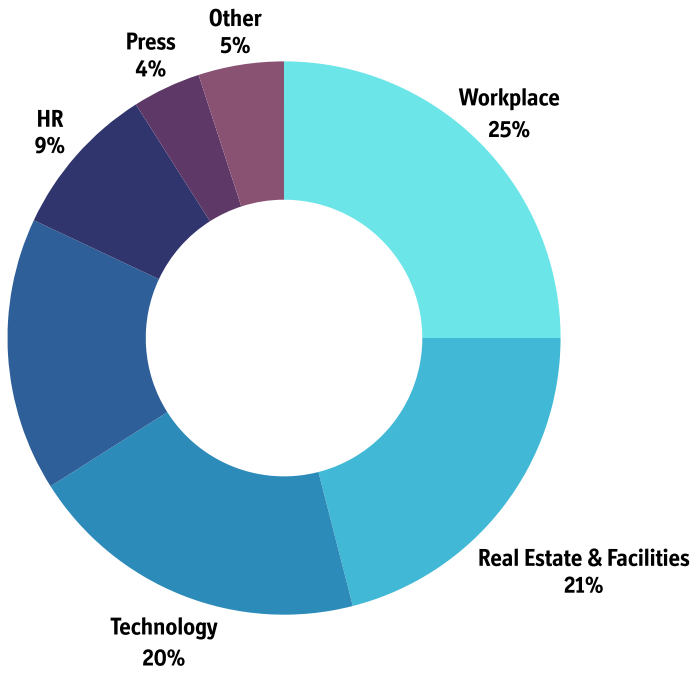
Sue Solly, Industry Lead Workplace Innovations, Swinburne University of Technology
Annabel Khoo, Global Strategy & Change Lead, Athena Blue Global



17:00 | CONFERENCE CLOSES

WHO ATTENDS

Attracting senior level professionals from Workplace, CRE, IT, HR and Architecture & Design



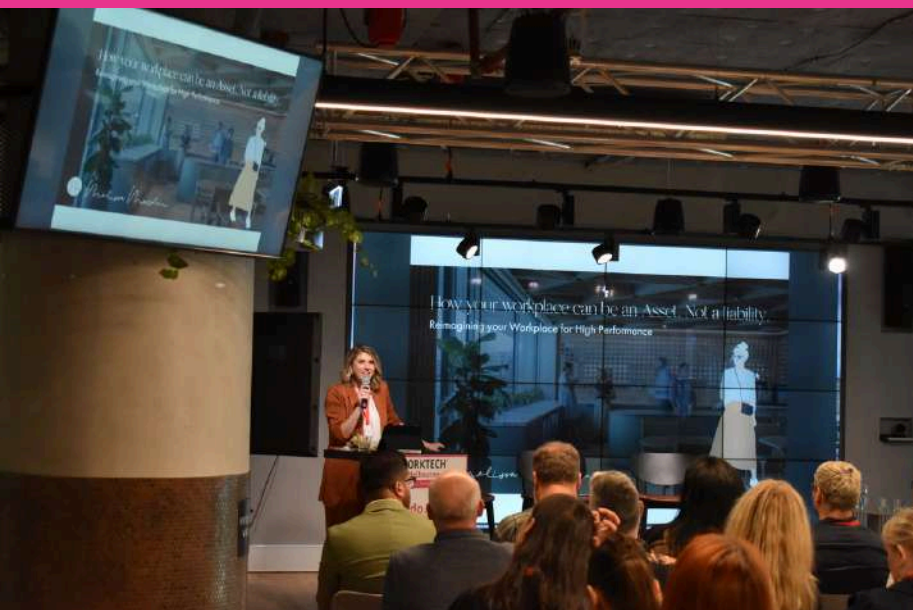
A well-spoken and experienced group of presenters providing leading edge subjects current topics and statistics. A great place to learn about new ideas.

WORKTECH DELEGATE, DELOITTE



Informative, interesting views on workplace design, planning technology and workers

WORKTECH DELEGATE, BANK OF MONTREAL



BOOK NOW

www.worktechevents.com/events/worktech26-melbourne/

KEY INFORMATION

Date

When: Tuesday 30th June

Where: AMDC, Swinburne University of Technology, Hawthorn

How to book:

Visit: www.worktechevents.com/events/worktech26-melbourne/

Offer a Special Rate to Your Network!

Become a marketing partner for this event and qualify for a special rate for your colleagues, complimentary passes for yourself, logo exposure for your organisation, and more!

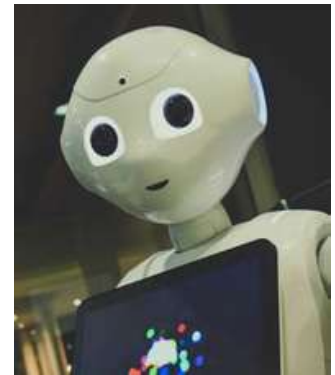
If you are part of a group that would like to attend and are looking for a joint group rate please get in touch to arrange a bespoke ticket price.

Become a WORKTECH Ambassador

We're looking for people that love the future of work and the workplace and social media. People who are willing to become part of our team and help spread the word to the masses. There will be a free event ticket available to successful applicants.

For more information on the above initiatives, please contact:

kirsty.darlington@worktechevents.co.uk



7 St. John's Mews
13 St. John's Road, Hampton Wick
Kingston upon Thames, KT1 4AN, UK

+44 (0)20 89 77 89 20
info@unwired.eu.com

www.worktechevents.com