

FINANCIAL WORKPLACE

LONDON W

EXPLORE THE FUTURE FINANCIAL WORKPLACE

M&G, LONDON

WEDNESDAY 11TH JUNE 2025

08:30 - 17:00

EVENT SPONSORS

HOST PARTNER



SILVER & VIP DINNER
SPONSOR



GOLD PLUS SPONSORS



BRONZE SPONSORS



BESPOKE SPONSORS



GOLD SPONSORS



SUPPORTED BY





Conference Producer,
WORKTECH Events

A warm welcome to Financial Workplace London

Financial Workplace is the forum for all workplace professionals involved in the future of work and the workplace for the financial sector.

Never before has the workplace, and the way we work been so high on the agenda for organisations. As we make the great return to the office, how can business leaders in the financial services sector build engaging workplace experiences and cultures for their people?

You are invited to join 100+ senior professionals from real estate, facilities, HR, technology, executive management, architecture, design and professional advisors from some of the world's top financial institutions to listen to global thought leaders and share best practice and expertise.

The conference will be run in one stream, which means our delegates will get to attend every speaker presentation. We will also have a curated innovation exhibition happening in the breakout areas for attendees to meet with our education partners, complementing learning throughout the day, as well as three networking breaks, creating time for attendees to meet the other participants.

We hope you will be able to join us and we are looking forward to welcoming you to the event on 11th June.

Warmest regards,
Caroline

CONTENTS



SPEAKERS



SESSSIONS



CONFERENCE AGENDA



VENUE



WHO ATTENDS



KEY INFORMATION

MEET THE SPEAKERS



Financial Workplace London will attract some of the biggest and brightest names to debate, discuss, and divulge the latest thinking on the future of work and the workplace.

The conference will feature leading international thinkers from industry and academia. Our speakers represent some of the world's biggest brands, alongside radical visionaries from new innovative organisations.

Through interdisciplinary speakers and learning experience, we focus on bringing cutting edge ideas and inspiration to the workplace community to enhance creativity and move thinking forward. Instead of focusing on peer to peer innovation through imitation, we aim to curate a unique programme, bringing together experts in the fields of people, place and technology and relevant adjacencies to reflect on the future of work and workplace.

Alongside the conference series, the WORKTECH Academy knowledge hub explores the future of work through six key themes: people, place, technology, design, culture and innovation. Creating leading commentary, research and publications that places scientific research at the heart of key business problems. www.worktechacademy.com

Full list of speakers

Kirsty Angerer, [HLW International Ltd.](#)
Rachel Caldicott, [M&G](#)
Phil Davitt, [Eptura](#)
Paul Evans, [Haltian](#)
Esra Fanoscu, [EBRD](#)
Alex Grossick, [Deutsche Bank](#)
Erin Mulligan Helgren, [Office Space Software](#)
Geraldine Jardeleza, [Wise Ltd.](#)
Malte Koeditz, [Spaciv](#)
Kasia Maynard, [WORKTECH Academy](#)
Alex Moon, [Spica](#)
Matthew O'Halloran, [Smart Spaces](#)
Sarah O'Reilly, [M&G](#)
Imogen Privett, [Unwork](#)
Wilco Poppelier, [Miro](#)
Martin Shaw, [M&G](#)
Dan Strobe, [Daniel Strobe Consulting Group](#)
Andy Targell, [JLL Technologies](#)
Jane Watson, [XY Sense](#)
Graylin Wakefield, [Visa Europe](#)
Catherine Yates, [NatWest](#)



Dan Strode, Daniel Strode Consulting Group



Rachel Caldicott, M&G



Geraldine Jardeleza, Wise Ltd.



Catherine Yates, NatWest



Kirsty Angerer, HLW



Martin Shaw, M&G



Esra Fanoscu, EBRD



Graylin Wakefield, Visa Europe



Alex Grossick, Deutsche Bank

SESSION HIGHLIGHTS

The future of work and the workplace is on everyone's agenda. This event brings thought leaders together to share cutting edge ideas on the future, from the perspectives of people, place and technology. It will allow an understanding of the key drivers of change and enablers of innovation that will shape how, where and when work takes place.

Key themes we will be discussing at this event include:

The Next-Gen Financial Workplace: Innovation, Sustainability and Experience

We explore how cutting-edge office design, smart technologies and sustainability initiatives are shaping the next generation of workplaces. Sessions highlight how leading organisations are re-thinking workplace to foster collaboration, enhance employee experience and future-proof their work environments.

Transforming Financial Workplaces Through Smart Technology and AI

As expectations rise around sustainability, performance, and employee experience, financial institutions are turning to AI and smart technologies to futureproof their workplaces. This theme explores how integrated platforms, data-driven design, and intelligent systems are enhancing efficiency, engagement, and space utilization. Learn how industry leaders are using tech to transform real estate strategies and create smarter, more adaptive work environments

Building Purposeful Workplaces: Culture, Collaboration, and Human-Centric Design

Beyond office attendance policies, financial workplaces must create environments that attract talent, foster collaboration, and strengthen company culture. This theme delves into experience-driven workplace design, hybrid work strategies, and AI-powered solutions that enhance employee engagement. Examine how leading firms are shaping the future of work through innovation and human-centric design.

Transforming EX Through Technology and Smart Solutions

As workplaces evolve, creating seamless, tech-enabled experiences is key to enhancing employee satisfaction and operational efficiency. This theme explores innovations in workplace access, digital transformation, and AI-driven solutions that improve engagement. From frictionless entry to transformative employee experiences in financial services, these sessions highlight how organisations can integrate technology to create smarter, more connected workplaces.

KEY THEMES

THE NEXT-GEN FINANCIAL
WORKPLACE: INNOVATION,
SUSTAINABILITY AND EXPERIENCE

TRANSFORMING FINANCIAL
WORKPLACES THROUGH SMART
TECHNOLOGY AND AI

BUILDING PURPOSEFUL
WORKPLACES: CULTURE,
COLLABORATION, AND HUMAN-
CENTRIC DESIGN

TRANSFORMING EX THROUGH
TECHNOLOGY AND SMART
SOLUTIONS



Driving Innovation: A Collaborative Approach to Sustainable, Smart, and Engaging Workspaces

Martin Shaw, Head of Infrastructure & Resilience, Workplace Solutions, M&G Paul Evans, Regional Director, Haltian, Alex Moon, Head of Customer Services, Spica and Rachel Caldicott, Head of Strategy, Planning and Workplace Solutions, M&G

Explore how businesses, workplace technology users, and software vendors are coming together to shape the future of work. This session highlights the power of collaboration in creating cutting-edge workplace strategies—integrating sustainability, smart technologies, and experience-driven innovations. Discover how partnerships between organisations and technology providers foster dynamic, future-ready work environments that evolve with the needs of modern financial businesses.

Culture as the Antidote to Hyperchange

Dan Strode, Founder, Daniel Strode Consulting Group and ex Group Director of Culture & Strategy within Global Human Resources, Grupo Santander

In a world of hyperchange, where technology accelerates, uncertainty rises, and traditional models fall short, organisational culture becomes your greatest asset. This session explores how cultivating a strong culture can be your survival plan, not just a buzzword. Drawing on real-world examples, we'll uncover how a growth mindset, embracing technology, and rethinking your business model are essential behaviours for navigating the future. Walk away with tangible strategies to activate culture as your strategic multiplier.



Expert panel: Reimagining the Financial Workplace in the Hybrid Era

Catherine Yates, Lead Strategic Workplace Change Manager, NatWest, Matthew Potter, Head of Workplace Experience Technology, HSBC, Esra Fanoscu, Managing Director, Corporate Services, EBRD, Graylin Wakefield, Corporate Services Strategy & Operations Lead, Visa Europe, Erin Mulligan Helgren, CEO OfficeSpace Software.

As hybrid work becomes the norm, financial institutions must ask: how do we make the office matter? We explore how senior workplace leaders are redesigning offices to attract employees back—not by mandate, but by meaning. With insights from flagship London projects, discover how culture, collaboration, and experience are reshaping the role of the office to support high-performing hybrid teams

CONFERENCE OPENS

09:00 CHAIRPERSON'S OPENING REMARKS & WELCOME ADDRESS

Kasia Maynard, [Head of Research and Editorial, WORKTECH Academy](#)
 Martin Shaw, [Head of Infrastructure & Resilience, Workplace Solutions, M&G](#)

WORKTECH ACADEMY



THEME: THE NEXT-GEN FINANCIAL WORKPLACE: INNOVATION, SUSTAINABILITY, AND EXPERIENCE

This theme explores how cutting-edge office design, smart technologies, and sustainability initiatives are shaping the next generation of workplaces. Sessions highlight how leading organisations are rethinking the workplace to foster collaboration, enhance employee experience, and future-proof their work environments.

09:15 OPENING KEYNOTE: THE FUTURE OF WORK: GLOBAL INNOVATIONS AND TRENDS

Imogen Privett, [Director Workplace Innovation, Unwork](#)



Join us for a deep dive into international workplace innovation, featuring ground-breaking examples from leading global organisations like Booking.com in Amsterdam and Lego in Billund that have created innovative new HQs, as well as emerging technologies and trends transforming work. Artificial intelligence, data analytics, and emerging technologies are reshaping organisations. Focusing on next-generation collaboration tools to digital platforms that drive real-time engagement, this session explores practical strategies and best practices for digital solutions and physical workplaces.

09:50 NAVIGATING THE FUTURE FINANCIAL WORKPLACE: INSIGHTS FROM EPTURA'S 2025 WORKPLACE INDEX

Phil Davitt, [Senior Vice President of Global Professional Services, Eptura](#)



This session will explore key insights from the newly released findings from the 2025 Workplace Index, highlighting how financial institutions can address current workplace challenges. With 34% of businesses planning to increase in-office attendance, the focus will be on integrating AI and unified technology platforms to optimise space utilisation and enhance employee experiences. Discussions will cover overcoming disconnected systems, implementing AI for operational efficiency, and the emerging role of digital workplace leaders in shaping the future financial workplace.

10:20 INNOVATION PLATFORM: XY SENSE | THE TRUE COST OF INACCURATE DATA

Jane Watson, [General Manager, EMEA, XY Sense](#)



10:25 NETWORKING & COFFEE BREAK

THEME: TRANSFORMING FINANCIAL WORKPLACES THROUGH SMART TECHNOLOGY AND AI

As expectations rise around sustainability, performance, and employee experience, financial institutions are turning to AI and smart technologies to futureproof their workplaces. This theme explores how integrated platforms, data-driven design, and intelligent systems are enhancing efficiency, engagement, and space utilization. Learn how industry leaders are using tech to transform real estate strategies and create smarter, more adaptive work environments.

10:55 DRIVING INNOVATION: A COLLABORATIVE APPROACH TO SUSTAINABLE, SMART, AND ENGAGING WORKSPACES

Martin Shaw, **Head of Infrastructure & Resilience, Workplace Solutions, M&G**
 Paul Evans, **Regional Director, Haltian**,
 Alex Moon, **Head of Customer Services, Spica** and Rachel Caldicott,
Head of Strategy, Planning and Workplace Solutions, M&G

Explore how businesses, workplace technology users, and software vendors are coming together to shape the future of work. This session highlights the power of collaboration in creating cutting-edge workplace strategies—integrating sustainability, smart technologies, and experience-driven innovations. Discover how partnerships between organisations and technology providers foster dynamic, future-ready work environments that evolve with the needs of modern financial businesses.



11:25 CUT DOWN ON CRE TECH DEBT USING ENTERPRISE AGILITY

Andy Targell, **Global Head of Real Estate Technology Advisory, JLL Technologies**

As financial institutions modernise real estate portfolios, legacy systems and siloed data create mounting CRE tech debt. In this session, JLLT's Andy Targell will reveal how enterprise agility can break down those barriers—streamlining technology stacks, accelerating time-to-value, and aligning digital investments with evolving workplace strategies. Learn how to apply agile principles to CRE tech transformation and build a more responsive, data-driven real estate function fit for the future.



11:55 SHAPING THE FUTURE OF FINANCIAL WORKPLACES WITH AGENTIC AI

Matthew O'Halloran, **Head of Revenue, Smart Spaces**



In this forward-looking session, Dan explores the transformative impact of Agentic AI on the financial workplace. As AI evolves from a passive tool into an active, goal-driven collaborator, financial institutions are reimagining how work is structured, decisions are made, and environments adapt to human needs. Drawing on real-world insights and emerging use cases, Dan will illustrate how Agentic AI enables intelligent automation, proactive space optimisation, and predictive decision support—empowering employees, enhancing productivity, and reshaping office design. Attendees will gain a practical understanding of how to harness this next wave of AI to create agile, responsive, and human-centric financial workplaces.

12:20 NETWORKING & LUNCH BREAK

THEME: BUILDING PURPOSEFUL WORKPLACES: CULTURE, COLLABORATION, AND HUMAN-CENTRIC DESIGN

Beyond office attendance policies, financial workplaces must create environments that attract talent, foster collaboration, and strengthen company culture. This theme delves into experience-driven workplace design, hybrid work strategies, and AI-powered solutions that enhance employee engagement. Examine how leading firms are shaping the future of work through innovation and human-centric design.

13:20 FINTECH CASE STUDY: DESIGNING TRUST - HOW WORKPLACE EXPERIENCE IS BECOMING FINANCIAL SERVICES' SECRET ADVANTAGE

Kirsty Angerer, [Associate, Director HLW International Ltd.](#) and Geraldine Jardeleza, [Global Workplace Lead, Wise Ltd.](#)

hlw

7Wise

In a sector built on precision and trust, how we design our workplaces is becoming just as critical as what we do in them. In this session, we share exclusive data on employee experience before and after workplace redesigns — revealing what really moves the needle. Drawing on insights from Wise and beyond, we unpack how financial services can use space as a strategic asset to drive culture, trust, and performance. For workplace leaders navigating hybrid, this is your playbook for creating environments that earn the commute — and reflect your company's mission.

13:50 CULTURE AS THE ANTIDOTE TO HYPERCHANGE

Dan Strode, [Founder, Daniel Strode Consulting Group](#) and ex [Group Director of Culture & Strategy within Global Human Resources, Grupo Santander](#)

In a world of hyperchange, where technology accelerates, uncertainty rises, and traditional models fall short, organisational culture becomes your greatest asset. This session explores how cultivating a strong culture can be your survival plan, not just a buzzword. Drawing on real-world examples, we'll uncover how a growth mindset, embracing technology, and rethinking your business model are essential behaviours for navigating the future. Walk away with tangible strategies to activate culture as your strategic multiplier.

14:25 EXPERT PANEL: REIMAGINING THE FINANCIAL WORKPLACE IN THE HYBRID ERA

Catherine Yates, [Lead Strategic Workplace Change Manager, NatWest](#), Esra Fanoscu, [Managing Director, Corporate Services, EBRD](#), Graylin Wakefield, [Corporate Services Strategy & Operations Lead, Visa Europe](#), Erin Mulligan Helgren, [CEO OfficeSpace](#)

As hybrid work becomes the norm, financial institutions must ask: how do we make the office matter? We explore how senior workplace leaders are redesigning offices to attract employees back—not by mandate, but by meaning. With insights from flagship London projects, discover how culture, collaboration, and experience are reshaping the role of the office to support high-performing hybrid teams



15:05 NETWORKING & COFFEE BREAK

THEME: TRANSFORMING EX THROUGH TECHNOLOGY AND SMART SOLUTIONS

As workplaces evolve, creating seamless, tech-enabled experiences is key to enhancing employee satisfaction and operational efficiency. This theme explores innovations in workplace access, digital transformation, and AI-driven solutions that improve engagement. From frictionless entry to transformative employee experiences in financial services, these sessions highlight how organisations can integrate technology to create smarter, more connected workplaces.

M&G, 10 FENCHURCH AVENUE, LONDON

15:30 EXPERT PANEL: DESIGNING THE FUTURE FINANCIAL WORKPLACE – HOW DATA, DESIGN, AND SCALE SHAPE WHAT'S NEXT

Malte Koeditz, [Founder, Spaciv](#), Wilco Poppelier, [Global Head of Workplace Strategy, Miro](#), Alex Grossick, [UK&I & Americas Real Estate Lead, Deutsche Bank](#).



As financial institutions grapple with new expectations for flexibility, performance, and experience, a new challenge emerges: how to deliver highly tailored workplace environments at enterprise scale. How do data-driven design, adaptable work models, and human-centred strategy converge to shape future financial workplace? Bringing together diverse perspectives—a tech scale-up to a global powerhouse—to explore how different organisations are using data and design to build workplaces that are not only efficient, but also engaging and future-ready.

16:00 KNOWLEDGE EXCHANGE – INSIGHTS, REFLECTIONS, AND FORWARD THINKING

As the day concludes, join us to reflect on key themes, insights, and takeaways from the conference. This interactive session will distil key learnings, spark discussion, and explore how the ideas presented can drive future action. Share your thoughts, gain fresh perspectives, and leave inspired to turn insights into impact.

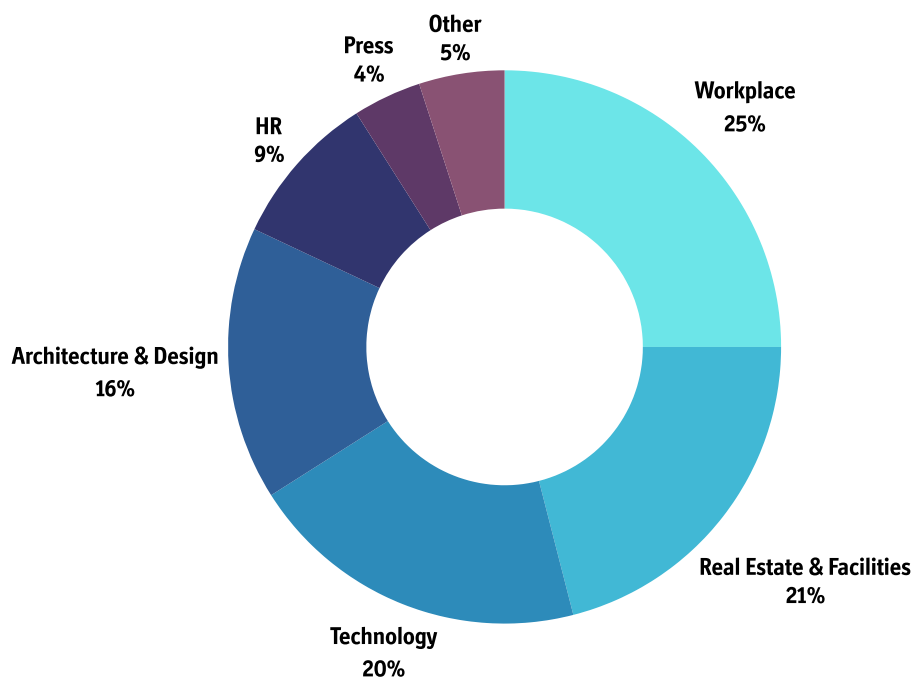
16:30 CHAIRPERSON'S CLOSING REMARKS

Kasia Maynard, [Head of Research and Editorial, WORKTECH Academy](#)



16:45 CONFERENCE CLOSES & NETWORKING DRINKS

WHO ATTENDS



A well-spoken and experienced group of presenters providing leading edge subjects current topics and statistics. A great place to learn about new ideas.

WORKTECH DELEGATE, DELOITTE



Informative, interesting views on workplace design, planning technology and workers

WORKTECH DELEGATE, BANK OF MONTREAL



PAST ATTENDEES INCLUDE



Vice President, Global
Real Estate &
Workplace Experience
American Express



Director, Workplace
Behaviourist
Barclays



Head of Workplace
Operations
Blackstone



Managing Director,
Head of Corporate
Services UK & Europe
HSBC



Partner Total
Workplace
Cushman & Wakefield
Ltd



Property Manager
Goldman Sachs & Co



BNY MELLON

Global Head of
Workspace
Transformation for
Technology Services
BNY Mellon



Product Manager
Workplace
Collaboration
JP Morgan Chase &
Co



Global Digital
Workplace Strategy
Senior Director
The Boston Consulting
Group



Real Estate
Technology and
Innovation - Strategy
and Execution Leader -
EMEA
Ernst & Young

KEY INFORMATION

Date

When: Wednesday, 11th June 2025

Where: M&G, 10 Fenchurch Avenue, London

How to Book

Visit: www.worktechevents.com/events/financial-workplace25-london/

Offer a Special Rate to Your Network

Become a marketing partner for this event and qualify for a special rate for your colleagues, complimentary passes for yourself, logo exposure for your organisation, and more!

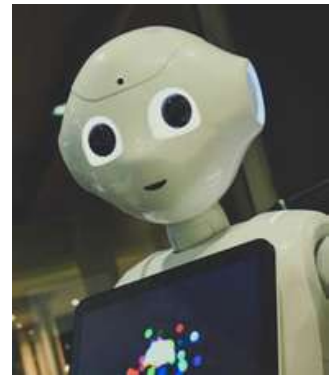
If you are part of a group that would like to attend and are looking for a joint group rate please get in touch to arrange a bespoke ticket price.

Become a WORKTECH Ambassador

We're looking for people that love the future of work and the workplace and social media. People who are willing to become part of our team and help spread the word to the masses. There will be a free event ticket available to successful applicants.

For more information on the above initiatives, please contact:

sally.adamson@worktechevents.co.uk



WORKTECH™

WORK / WORKPLACE / TECHNOLOGY / INNOVATION

7 St. John's Mews

13 St. John's Road, Hampton Wick

Kingston upon Thames, KT1 4AN, UK

+44 (0)20 89 77 89 20

info@unwired.eu.com

www.worktechevents.com