

# WORKTECH™ Singapore

WORK / WORKPLACE / TECHNOLOGY / INNOVATION

## EXPLORE THE FUTURE OF WORK AND THE WORKPLACE

BIG PICTURE, LEVEL 9, CAPITAL TOWER

TUESDAY 12TH NOVEMBER

10:00 - 17:00

### EVENT SPONSORS

PLATINUM PARTNER

**XY** SENSE

GOLD PLUS SPONSOR

*9am*

SILVER SPONSOR

neat.

BRONZE SPONSOR

framery™

SUPPORTED BY

 THE  
EXECUTIVE  
CENTRE

unwork

Worker's Resort

 PointGrab

WORKTECH ACADEMY

10times



Isabel Dewhust-Marks

Managing Director,  
WORKTECH Events

## A warm welcome to WORKTECH24 Singapore

WORKTECH is the original conference for all those involved in the future of work and the workplace as well as real estate, technology, and innovation.

This exciting event will feature an insightful programme of peer-to-peer discussions and thought leadership sessions with workplace visionaries, exploring the changing landscape of work and the purpose of the workplace.

Our agenda will explore transformative shifts in work culture, technology integration, and employee expectations. Join us to gain perspectives from industry leaders and thought pioneers on the evolving world of work in 2024.

Secure your spot now and be part of the conversation defining the future workplace!

Warmest Regards

Isabel

# CONTENTS



**SPEAKERS**



**SESSIONS**



**CONFERENCE AGENDA**



**VENUE**



**WHO ATTENDS**



**KEY INFORMATION**



# MEET THE SPEAKERS



WORKTECH24 Singapore will attract some of the biggest and brightest names to debate, discuss, and divulge the latest thinking on the future of work and the workplace.

The conference will feature over 20 speakers, including leading international thinkers from industry and academia. Our speakers represent some of the world's biggest brands and best universities and research departments, alongside radical visionaries from new innovative organisations.

Through interdisciplinary speakers and learning experience, we focus on bringing cutting edge ideas and inspiration to the workplace community to enhance creativity and move thinking forward. Instead of focusing on peer to peer innovation through imitation, we aim to curate a unique programme, bringing together experts in the fields of people, place and technology and relevant adjacencies to reflect on the future of work and workplace.

Alongside the conference series, the WORKTECH Academy knowledge hub explores the future of work through six key themes: people, place, technology, design, culture and innovation. Creating leading commentary, research and publications that places scientific research at the heart of key business problems. [www.worktechacademy.com](http://www.worktechacademy.com)

## Full list of speakers

Dr. Reece Akhtar **Deeper Signals**  
Chinmayee Ananth **Adrianse Global**  
Anuradha Banerjee **The Coca-Cola Company**  
Jack Chan **Neat**  
Dr. Agustin Chevez **The University of Melbourne**  
Mark Cunningham **Standard Chartered Bank**  
Razvan Ghilic-Micu **Hassell**  
Jared Hortsman **XY Sense**  
Elaine Huang **9am**  
Pam Jouwena **Hassell**  
Sanjay Narang **Intel Corporation**  
Greg Pearce **S&techs**  
Antoine Pommier **Delhom Acoustics**  
Neil Salton **ChangeWorq**  
Hurrairah bin Sohail **Inavate APAC**  
Lin Wei **United Design Practice**  
Jan Zesach **Novartis**

More speakers to be announced

## 10:00 | CONFERENCE OPENS

### 10:30 | CHAIRPERSON'S WELCOME

Neil Salton, **Managing Director, ChangeWorq Pte. Ltd**

CW | ChangeWorq

### 10:45 | OPENING KEYNOTE: WORKPLACE VELOCITY

Dr. Agustin Chevez, **Honorary Fellow - Management and Marketing, The University of Melbourne**



The pandemic forced us to pause and rethink the places where we work—employees no longer return to the office without purpose. In response, stakeholders from finance, design, delivery, and occupancy are seeking solutions to redefine workspaces. "Workplace Velocity" explores how a coordinated approach can create environments that align with the evolving dynamics of work, addressing both opportunities and challenges in the process.

### 11:25 | UNIQUELY HUMAN: THE IMPORTANCE OF CULTURE IN THE AI AGE

Dr. Reece Akhtar, **CEO & Co-Founder, Deeper Signals and Professor, NYU**



As artificial intelligence evolves, its potential to transform the workforce and society is both highly anticipated yet deeply uncertain. While it is still early to fully grasp the extent of AI's impact on work, current trends suggest that AI will predominantly influence technical domains, either as an assistant or through automation. However, amid this technological shift, the fundamental aspects of human nature — our emotional intelligence, curiosity, and innate motivations — remain unchanged. In the near future, when AI becomes a ubiquitous workplace tool, I believe that non-cognitive skills and organizational culture will become not only more important, but critical competitive advantages. This talk will explore how we predict AI will, and will not, reshape the future of work, and the implications this has on the way organizations recruit, develop and promote talent.

### 11:50 | EXPERT PANEL: REDESIGNING WORKSPACES FOR THE AI-POWERED WORKFORCE: ENHANCING PRODUCTIVITY, WELL-BEING, AND SUSTAINABILITY

Lin Wei, **Founder, United Design Practice**  
 Dr. Agustin Chevez, **Honorary Fellow - Management and Marketing, The University of Melbourne**  
 Jan Zesach, **Regional Workplace Lead, Real Estate & Facility Services, Novartis**  
 Mark Cunningham, **Global Head of CRES Data & Insights, Standard Chartered Bank**



Explore the transformative power of AI in reshaping workplace design and management. This panel will examine the current market offerings, data integration, and real-time data capture/sharing, showcasing how AI enhances efficiency, predicts trends, and manages assets. Learn how AI-driven technology can redefine office spaces, understand employee needs, and create a responsive, data-informed environment. Gain insights into how AI is revolutionising the way we work, live, and collaborate, providing a holistic view of the future workplace landscape.

### 12:15 | DESIGNING FOR ENGAGEMENT: HOW NEAT BRINGS PEOPLE AND SPACES TOGETHER

Jack Chan, **Regional Sales Manager, Neat**



### 12:20 | INNOVATION PLATFORM: POINTGRAB

Nigel Gutschlag, **APAC Sales Director, PointGrab**



### 12:25 | NETWORKING & LUNCH BREAK

## 1:15 | AUDIENCE INTERACTION

### 13:25 | OWNING THE UNKNOWN: DATA & THE HYBRID WORKPLACE

Jared Horstman, **APAC Commercial Manager**,  
**XY Sense**



Have you got workplace analysis paralysis? You're not alone. In this session, Jared Horstman, APAC Commercial Manager for XY Sense, explores the workplace metrics that actually matter and how to ACT on your data to drive transformative workplace change in 2024.

This presentation will explore:

- Current Singaporean & APAC workplace utilisation trends & benchmarks - and what they reveal about our changing strategic priorities in CRE,
- The metrics that actually matter to a successful hybrid workplace,
- How to successfully balance "the art and science" of successful hybrid workplace,
- Case studies from companies who have successfully combined the two and achieved,
- Transformational workplace outcomes.

### 13:45 | THE IMPACT OF WELLNESS-ORIENTED TECHNOLOGY ON WORKPLACE AND TEAM OUTCOMES

Elaine Huang, **COO**, **9am**



This session delves into the critical question: Do wellness-oriented initiatives and equipment truly enhance team productivity? We'll explore the latest research, real-world case studies, and expert insights to uncover the key considerations for effectively integrating wellness-oriented technology into the workplace. Join us to discover how to maximize the impact of your wellness investments.

### 14:05 | EXPERT PANEL: UNLEASHING PRODUCTIVITY AND COLLABORATION IN THE MODERN WORKPLACE: HARNESSING AI AND CUTTING-EDGE TECHNOLOGY

Hurrairah bin Sohail, **Managing Editor**,  
**Inavate APAC**  
More speakers to be announced



Industry leaders will discuss how AI-powered tools and innovative tech solutions are enhancing flexibility, creativity, and engagement, driving new ways for teams to meet, collaborate, and perform at their best.

## 14:30 | NETWORKING & COFFEE BREAK

## 15:00 | AUDIENCE INTERACTION

### 15:10 | FROM ORDINARY TO EXTRAORDINARY: A NEW ICONICITY

Razvan Ghilic-Micu, **Senior Associate**, **Hassell**  
Pam Jouwena, **Senior Associate**, **Hassell**



The climate emergency makes it an imperative for us to dramatically curb carbon emissions now — and what better way of doing so than by turning our attention to the many unremarkable buildings in our dense cities. The presentation will outline six essential ingredients to transforming all old ordinary spaces into extraordinary new places.

### 15:35 | MIND THE GAP: ARE LANDLORDS TODAY PROVIDING FOR THE 'FUTURE OF WORK'?

Greg Pearce, **Managing Director and Co-founder**, **One Space Ltd and Principal**,  
**S&techs Singapore Pte Ltd**



Corporate real estate decision-makers in APAC face a wide array of premises choices, whilst the traditional supply-&-demand equation is made more complex by a host of related HR drivers – such as potential for hybrid work adoption & diverse workstyles; expectations of wellness, social equity & inclusion; and attraction & retention of talent. But as most Asian cities experience persistently high land value pressures, are there certain building typologies better-suited to meet today's evolving work needs? This talk provides a cursory exploration of this curious dynamic.

### 16:00 | THE FUTURE SOUND OF WORK - ACOUSTICS AS THE NEW FRONTIER IN WORKPLACE DESIGN

Antoine Pommier, **Head of Strategic Projects, Partner and Senior Acoustic Engineer, Delhom Acoustics**



In this session, Antoine will delve into how acoustics is increasingly becoming a critical factor in the design of modern workspaces. Drawing from his rich experience and innovative approach, he will discuss the influence of noise on employee performance, the importance of sound privacy and confidentiality, and how green building certifications are driving acoustics to the forefront of design considerations.

### 16:20 | EXPERT PANL: THE FUTURE OF HUMAN CONNECTION DRIVING WORKSPACE DECISIONS

Chinmayee Ananth, **Design Director - Experience and Strategic Transformation, Adrianse Global**

Sanjay Narang, **Global/Regional Programs Lead - IFM and Capital Projects, Intel Corporation**

Anuradha Banerjee, **Global Real Estate & Workplace, Program Director, The Coca-Cola Company**

Design today must prioritize human connection. Trust, belonging, and relatability is essential for positive transformation in workplaces. People-centric decision-making should guide real estate strategies, improving productivity and business outcomes. A panel will explore these challenges, with clients sharing insights from their work environments and systems.



### 16:45 | CHAIRPERSON'S CLOSING REMARKS

Neil Salton, **Managing Director, ChangeWorq Pte. Ltd**

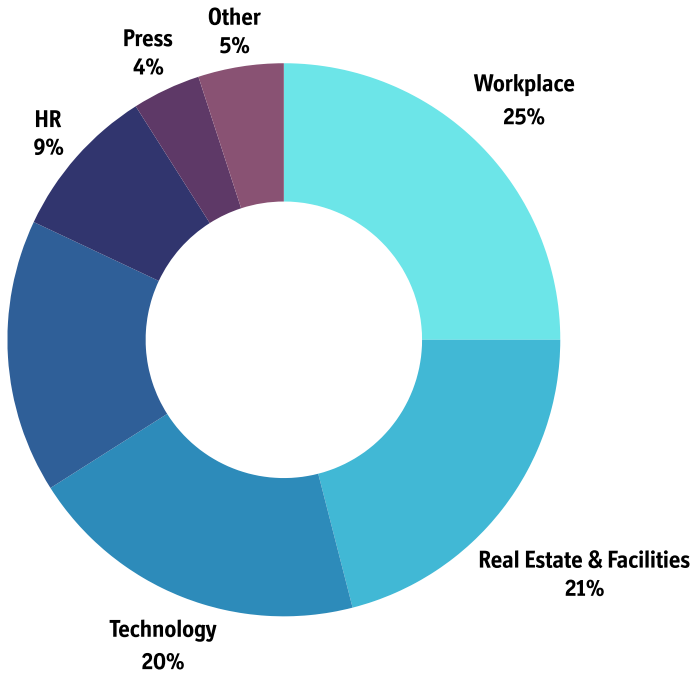
CW | ChangeWorq

### 17:00 | CONFERENCE CLOSES



# WHO ATTENDS

Attracting senior level professionals from Workplace, CRE, IT, HR and Architecture & Design



Informative, eye-opening and worthwhile

DELEGATE, LEGO



Informative, insightful, well planned, great speakers, something new every time!

DELEGATE, UNILEVER



# BOOK NOW

[www.worktechevents.com/events/worktech24-singapore](http://www.worktechevents.com/events/worktech24-singapore)



# KEY INFORMATION

## Date & Venue

When: Tuesday 12th November 2024

Where: Big Picture, Level 9, Capital Tower, Singapore

## How to book:

Visit: [www.worktechevents.com/events/worktech24-singapore](http://www.worktechevents.com/events/worktech24-singapore)

## Offer a Special Rate to Your Network!

Become a marketing partner for this event and qualify for a special rate for your colleagues, complimentary passes for yourself, logo exposure for your organization, and more!

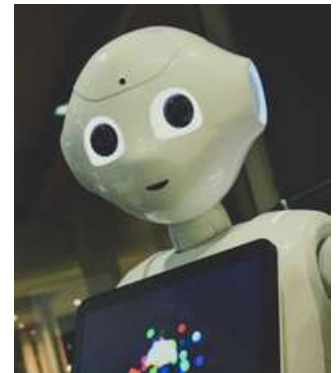
If you are part of a group that would like to attend and are looking for a joint group rate please get in touch to arrange a bespoke ticket price.

## Become a WORKTECH Ambassador

We're looking for people that love the future of work and the workplace and social media. People who are willing to become part of our team and help spread the word to the masses. There will be a free event ticket available to successful applicants.

For more information on the above initiatives, please contact:

[kirsty.darlington@worktechevents.co.uk](mailto:kirsty.darlington@worktechevents.co.uk)



7 St. John's Mews  
13 St. John's Road, Hampton Wick  
Kingston upon Thames, KT1 4AN, UK

+44 (0)20 89 77 89 20  
[info@unwired.eu.com](mailto:info@unwired.eu.com)

[www.worktechevents.com](http://www.worktechevents.com)