

# WORKTECH™ London

WORK / WORKPLACE / TECHNOLOGY / INNOVATION

## Special Edition

# EXPLORE THE FUTURE OF WORK AND THE WORKPLACE

CONVENE, 22 BISHOPSGATE, LONDON

MONDAY 18th - WEDNESDAY 20th NOVEMBER

### HOST SPONSOR

**convene**™

### PLATINUM SPONSOR

**XY** SENSE

### GOLD PLUS SPONSOR

**Swift**Connect

### GOLD SPONSORS

  
**Verkada**

 **DISRUPTIVE  
TECHNOLOGIES**

 **smartspaces**

### SILVER SPONSORS

 **yellowbox**

 **UPFLEX**

### BRONZE SPONSOR

 **APPSPACE**

### VIP DINNER SPONSOR

 **XY** SENSE

### SUPPORTED BY

**Property  
Week**

 **AV  
MAGAZINE**

 **devIT** (devITjobs.uk)

**unwork**

**WORKTECH ACADEMY**



Conference Producer,  
WORKTECH Events

## A warm welcome to WORKTECH24 London Special Edition

WORKTECH24 London Special Edition is the conference for all those involved in the future of work and the workplace as well as real estate, technology and innovation.

WORKTECH brings innovative ideas and inspiration to the workplace community through inter-disciplinary speakers and learning experience to enhance creativity and move thinking forward.

Join over 250 senior professionals from real estate, facilities, HR, technology, executive management, architecture, design and professional advisors to listen to global thought leaders, further their knowledge and share best practise and expertise.

Spanning three days and multiple locations, this festival brings together senior business leaders to explore the future landscape. By identifying challenges and emerging trends, our intention is to guide business leaders on how to navigate and prioritise in the months ahead.

Alongside the conference, we will have a curated innovations exhibition taking place in the breakout areas for attendees to meet with our education partners, complementing learning during the day. After the conference closes, all delegates will be invited to continue networking at the WORKTECH drinks reception.

We hope you will be able to join us and we are looking forward to welcoming you to the event on 18th- 20th November.

Warmest regards,  
Caroline

# CONTENTS



**SPEAKERS**



**TOURS & SESSIONS**



**CONFERENCE AGENDA**



**VENUE**



**WHO ATTENDS**



**KEY INFORMATION**

# MEET THE SPEAKERS



WORKTECH24 London Special Edition will attract some of the biggest and brightest names to debate, discuss, and divulge the latest thinking on the future of work and the workplace.

The conference programme features 20 speakers from leading international thinkers from industry and academia.

Through interdisciplinary speakers and learning experiences, we focus on bringing cutting edge ideas and inspiration to the workplace community to enhance creativity and move thinking forward. Instead of focusing on peer to peer innovation through imitation, we aim to curate a unique programme, bringing together experts in the fields of people, place and technology and relevant adjacencies to reflect on the future of work and workplace.

Alongside the conference series, the WORKTECH Academy knowledge hub explores the future of work through six key themes: people, place, technology, design, culture and innovation. Creating leading commentary, research and publications that places scientific research at the heart of key business problems. [www.worktechacademy.com](http://www.worktechacademy.com)

**Simon Booth** Clifford Chance  
**Ajay Chowdhury** Serial Entrepreneur & Author  
**Audrey Cowan** Burges Salmon LLP  
**David Crew** Hogan Lovells  
**Rhebeckha D'Silva** Macquarie Group Limited  
**Sol Enemoh** HSBC  
**James Frankis** Convene  
**Paav Gandhi** Accessia  
**Matt Graham** EY  
**Christopher Higgins** GSK  
**Alyssa Jaffer** Deliveroo  
**James Kendall** SwiftConnect  
**Bengt Lundberg** Disruptive Technologies  
**Marnix Mali** Booking.com  
**Michelle Marwood** Norton Rose Fulbright  
**Kasia Maynard** WORKTECH Academy  
**Jeremy Myerson** WORKTECH Academy  
**Andrew Thexton-Pee** Thames Water  
**Imogen Privett** Unwork  
**Jane Watson** XY Sense



Ajay Chowdhury, Serial Entrepreneur & Author



Alyssa Jaffer, Deliveroo



Christopher Higgins, GSK



Jane Watson, XY Sense



Andrew Thexton-Pee, Thames Water



Rhebeckha D'Silva, Macquarie



Sol Enenmoh, HSBC



Michelle Marwood, Norton Rose Fulbright



Marnix Mali, Booking.com



Matt Graham, EY



Audrey Cowan, Burges Salmon LLP



David Crew, Hogan Lovells

# SESSION HIGHLIGHTS

Key themes we will be discussing at this event include:

## [The New World of Work: Challenges & Emerging Trends](#)

The pandemic has been a catalyst both re-shaping and re-thinking a new world of work. We examine what's on the horizon for the future of work, looking at how business leaders should respond and what should they prioritise in the months ahead.

## [Transforming the Workplace: Technology and Experience](#)

With rapid advancement in cutting-edge technologies and the cultivation of flexible working environments, the modern office is evolving into a dynamic destination. We explore the forefront of this innovation and technology and examine how it is shaping the workplace experience and built environment. We will discuss how it is enhancing productivity, fostering employee engagement, and creating smarter, more responsive workspaces that meet the demands of the future workforce.

## [People Centred Workplaces: Cultivating Culture & Engagement](#)

How can companies make the office an attractive proposition to employees who now have more choice in where and how they work? We examine the post pandemic impact on work, space, buildings and the effects on employee and company productivity and well-being, behaviour and culture.

## [Deep Dive: The Future of Work](#)

These next sessions see us break out into 2 streams to deep dive issues across attracting top talent, how to craft hospitality-driven workplace experiences and align workplace with sustainable and responsible business practices.

## [The New Workplace Revolution](#)

What does the future of work and workplace look like? What strategies are organisations adopting and what is the impact on the built environment and commercial real estate? In these last sessions of the day, we explore your perspectives and highlight collective viewpoints

### KEY THEMES

THE NEW WORLD OF WORK:  
CHALLENGES & EMERGING TRENDS

TRANSFORMING THE WORKPLACE:  
TECHNOLOGY AND EXPERIENCE

PEOPLE CENTRED WORKPLACES:  
CULTIVATING CULTURE,  
COLLABORATION & ENGAGEMENT

DEEP DIVE: THE FUTURE OF WORK

THE NEW WORKPLACE REVOLUTION

# WORKTECH LONDON: SPECIAL EDITION

This year's WORKTECH London is a Special Edition featuring two and a half days of office tours, networking opportunities, and a conference filled with sessions from leading voices, seminars, and debates for in-depth discussions. Our programme promises a diverse and stimulating experience with thought-provoking debates covering a wide range of subjects.

We start the conference with seminars and panels covering a wide range of topics, including the key challenges facing today's financial and legal workplace occupiers and how new technologies are shaping the future workplace experience.

Additionally, the conference will feature visits to new workspaces and innovative experience spaces. Attendees can also enjoy numerous networking opportunities, including the WORKTECH Drinks Reception, a VIP Dinner, and a Conference Party.

Join us as we explore the intersection of people, place, and technology at this pivotal moment for the office. Engage in the discussions, think openly, and forge new connections amidst the vibrant backdrop of London.

## HOW IT WORKS



### STEP 1

Visit our [website](#) and register for the conference by booking a ticket.



### STEP 2

Register your interest for the tours and roundtables by completing the form on our website and selecting which activities you'd like to take part in.



### STEP 3

We will send you a confirmation email and diary invite from the WORKTECH Team for the activities you have successfully signed up for.

*Please note that spaces are limited and subject to availability.*

## WORKPLACE TOURS AND ROUNDTABLES

Delegates can register their interest to join us on Monday 18th and Tuesday 19th for the legal & financial roundtables and exclusive workplace tours. Timings to be announced closer to the conference. *Please note that spaces are limited and subject to availability.*

### MONDAY 18th NOVEMBER

#### LEGAL ROUNDTABLE AND LAUNCH PARTY HOSTED BY BURGESS SALMON

**Future Workplace Panel:** Join us for an enlightening discussion where industry experts share insights from projects at pivotal stages of development. With a focus on 'return on experience', this dynamic discussion brings together law firms at various stages of curating their workplaces.

**Workplace Tours and Drinks:** At Burgess Salmon's newly refurbished London office, attendees will have the opportunity to explore the various levels and amenities of the building. Led by knowledgeable guides, groups will delve into the intricacies of the workplace design and be able to experience it first hand. The tour will conclude offering guests the opportunity to unwind and network.



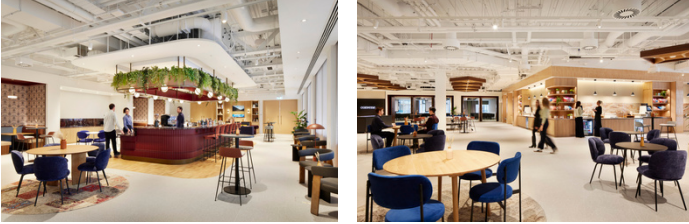
TUESDAY 19th NOVEMBER

## FINANCIAL ROUNDTABLE HOSTED BY CONVENE, SANCROFT



**Future Workplace Panel:** Join us for an enlightening discussion where industry experts share insights from projects at pivotal stages of development. With a focus on ‘return on experience’, this dynamic discussion brings together financial services firms at various stages of curating their workplaces.

**Sancroft Tours:** Nestled between historic London landmarks in Paternoster Square, Convene Sancroft, St. Paul’s is a one-of-a-kind venue with impressive scale. The design of the location draws inspiration from the surrounding local craftsmanship and nearby contemporary architecture. The space is flooded with natural light from the nine- to 14-foot floor-to-ceiling windows and provides a white box space allowing for client and event branding opportunities, in-house catering with customisation options.



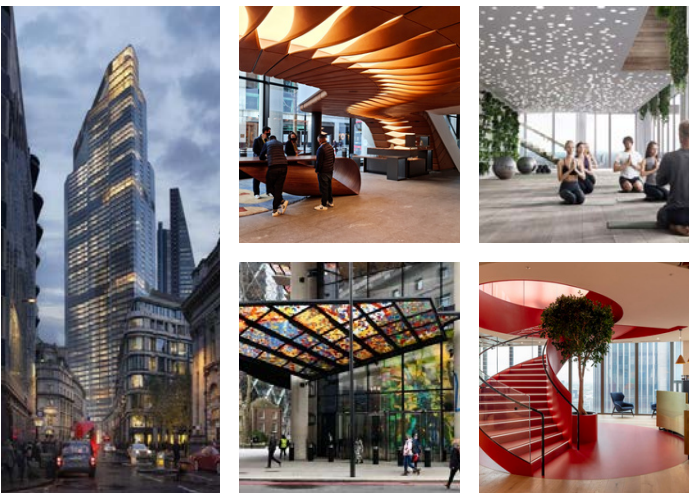
## WORKPLACE TOURS - GSK GLOBAL HQ

GSK's new global headquarters in Central London – a place where everyone is supported to thrive and get ahead together. Join us and see first-hand this ground-breaking new space.

The HQ offers close proximity to the UK capital’s fast-growing global Life Sciences hub, London’s Knowledge Quarter, and GSK’s existing collaboration partners including the Francis Crick Institute and King’s College London. On the corner of New Oxford Street and Eamshaw Street, the headquarters’ design and excellent public transport links supports the company’s commitment to sustainability.



## WORKPLACE TOURS - 22 BISHOPSGATE



Explore one of the world’s smartest workplaces and join the Smart Spaces team on a tour of 22 Bishopsgate, a people-led smart building, designed to meet the changing needs of the modern occupier and inspire a new way of working. Here, you’ll experience first-hand what it takes to make a commercial real estate property of this kind truly smart-enabled.

From contactless entry using Apple Wallet mobile wallet credentials to smart bike and locker storage in the ACP. From lunch click & collect functionality in the Market, to smart visitor management. This building has it all. You’ll be joined on the tour by a leading member of the Smart Spaces team who will be on-hand to answer any questions you may have. We hope to see you there!



**TUESDAY 19th NOVEMBER**

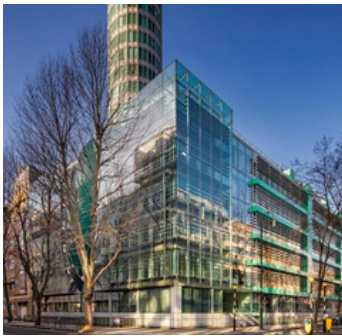
## **WORKPLACE TOURS - 100 LIVERPOOL STREET**

This tour will showcase how British Land is harnessing SwiftConnect's digital automation technology to transform people's experiences in its buildings, creating more efficiently and enhancing security. See and hear first-hand how their mobile access rollout of employee badges in Apple Wallet is starting to reshape how people access buildings and amenities across their portfolio.

You'll see the technology in action at 100 Liverpool Street, one of the smartest buildings in London, both at the entrance and in Storey, their flexible workspace and touchdown space. You will also hear how British Land and other occupiers use SwiftConnect's Street-to-Seat solution in other parts of their portfolio.



## **WORKPLACE TOURS - EDGE, 125 SHAFTESBURY AVENUE**



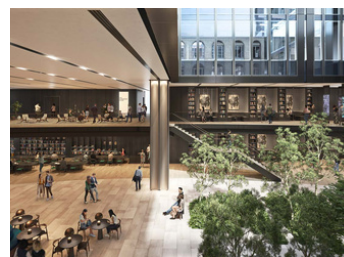
The redevelopment of 125 Shaftesbury Avenue, demonstrates the commitment to creating innovative, sustainable workplaces. This project aims for Net Zero by 2050 and reflects strong market demand for premium, eco-friendly office spaces. Join us to learn about cutting-edge design, sustainability strategies and vibrant, smart refurbished buildings.

## **WORKPLACE TOURS - EDGE, LONDON BRIDGE**

This location was EDGE's first London project. This state-of-the-art development is London's most sustainable office tower, designed to achieve both BREEAM Outstanding and WELL Platinum certification.



## **WORKPLACE TOURS - 40 LEADENHALL**



40 Leadenhall is one of the biggest schemes to ever receive planning permission in the City of London. Located in the City's insurance district, it will accommodate up to 10,000 people upon completion. The building is targeting BREEAM 'Excellent', NABERS 5 Star, and 'Platinum' WELL, WiredScore and SmartScore ratings. Join us to see what this amazing development holds for London.

**TUESDAY 19TH NOVEMBER**

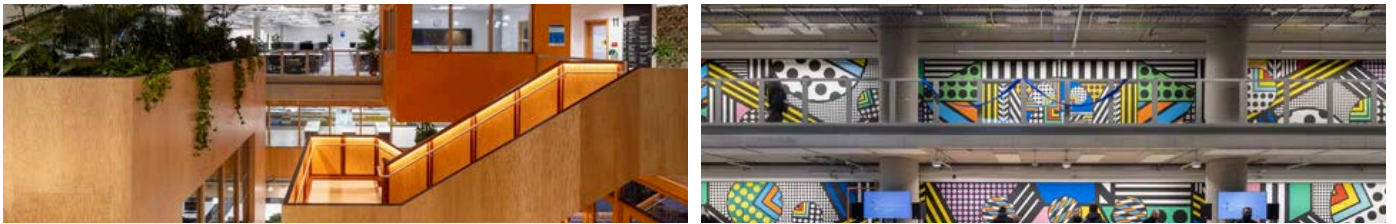
## **WORKPLACE TOURS - ZOOM EXPERIENCE CENTRE**

Join us to gain insights into cutting-edge technologies set to transform the future of work and workspaces. Experience immersive and interactive setups like the 125-foot Lens Wall and the world's first curved LED screen with multi-touch interactivity, which enhance engagement and communication. Visit the Boardroom of the Future which showcases state-of-the-art meeting technology that improves productivity and collaboration.



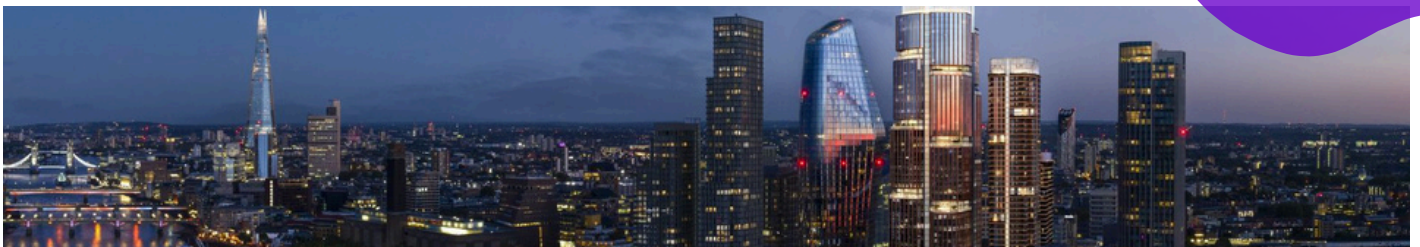
## **WORKPLACE TOURS - META, KING'S CROSS**

King's Cross is London's fastest growing district and has, over the past decade, outperformed all other London Opportunity Areas for employment and population growth. At the heart of the knowledge quarter, it has become a hub for creative and digital businesses, an important location for business in the capital attracting major global companies. On completion, circa 42,000 employees will be working across the estate.



## **SUMMARY REPORT AND TAKEAWAY**

Each attendee will receive a comprehensive summary of this stimulating festival edition of WORKTECH London 2024. This report will capture the highlights and key takeaways from each session including all the outputs from the tours, showcases, talks, and networking events across London. It will be available to all delegates and presented by our colleagues at WORKTECH Academy as part of the closing summary of the conference



## CONFERENCE OPENS

## REGISTRATION AND PRE-EVENT NETWORKING

## CHAIRPERSON'S WELCOME

Kasia Maynard, Head of Research and Editorial, WORKTECH Academy



## WELCOME TO CONVENE

James Frankis, Head of Product, Convene



## THE NEW WORLD OF WORK: CHALLENGES & EMERGING TRENDS

The pandemic has catalysed the re-shaping and re-thinking a new world of work. We examine what's on the horizon for the future of work, looking at how business leaders should respond and what should they prioritise in the months ahead.

## THE FUTURE IS HERE

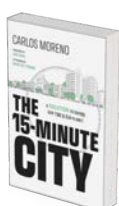
Ajay Chowdhury, serial entrepreneur, futurist, venture capitalist, author and ex-partner BCG. Co-founder of Shazam, Chairman of Cambridge Enterprise, Cambridge University's spin-out arm, Voted top 100 BAME business leaders in the UK by The Sunday Times



Ajay will explore the transformative impact of the latest advancements in technology and AI, heralding a new tech revolution. This revolution will profoundly affect every individual and industry, from healthcare to finance and beyond. As we stand on the cusp of this unprecedented change, companies and individuals must adapt to survive and thrive. Embrace the future by understanding how these innovations will redefine our world and prepare to navigate the challenges and opportunities ahead. The future is not just approaching; it is already here.

## THE 15-MINUTE CITY: A SOLUTION TO SAVING OUR TIME AND OUR PLANET

Carlos Moreno, Researcher, Scientist, Author of *The 15-Minute City*, Catherine Gall, Executive Director, Chaire ETI - IAE Paris Sorbonne School, Jeremy Myerson, Chairman, WORKTECH Academy



In this thought-provoking session, Professor Carlos Moreno, the world-acclaimed visionary behind *the 15-Minute City*, presents his urban concept and its implications for the future of work, via video. Catherine Gall and Jeremy Myerson then delve into the transformative potential of the 15-Minute City model, which has gained widespread support from mayors globally seeking to reduce car dependency, enhance quality of life, and address pressing challenges such as sustainability and post-pandemic recovery. The session will look at strategic approaches for designing human-centric cities based on innovative science-based solutions.

## MANAGING WORKPLACE EXPERIENCE: LESSONS FROM RETAIL

Lewis Allen, Director Portland Design

**PORTLAND.**



The digital world has revolutionised how consumers shop. Digital retailers have rethought the customer experience across channels and devices, and have empowered the customer. With retail much further down the digital transformation road, what lessons can other businesses learn? How can real estate leaders reimagine workplace? How can we seek to improve workplace experiences in hybrid work-from-home models?

## INNOVATION PLATFORM: YELLOWBOX



## COFFEE AND NETWORKING

### TRANSFORMING THE WORKPLACE: TECHNOLOGY AND EXPERIENCE

With rapid advancement in cutting-edge technologies and cultivation of flexible working environments, the modern office is evolving into a dynamic destination. We explore the forefront of this innovation and technology and examine how it is shaping the workplace experience and built environment; how it is enhancing productivity, fostering employee engagement, creating smarter, more responsive workspaces that meet the demands of the future workforce.

## GSK: BUILDING ONE OF THE HEALTHIEST WORKPLACES IN THE WORLD

Chris Higgins, Senior Programme Director, Workplace Real Estate and Facilities, GSK



Hear how a programme of scientific sprints to develop future ready workplace design standards and their fundamental metrics are helping GSK create one of the world's healthiest workplaces. Chris will share innovative ways to measure previously unquantifiable aspects of the workplace, putting employee wellbeing and cognitive performance at the heart of decision making. Hear about the holistic measurement using smart wearables, mood questionnaires through pulse surveys and cognitive health and performance through state-of-the-art app technology. Chris will showcase how the data informs and ultimately measures the success of GSK's new global HQ – a place where everyone is supported to thrive and get ahead together.

## THE METRICS THAT MATTER: DRIVING WORKPLACE SUCCESS IN 2024

Jane Watson, **Regional Manager EMEA, XY Sense**



Have you got workplace analysis paralysis? You're not alone. In this session, we explore the workplace metrics that matter and offer guidance on using data to drive transformative workplace change in 2024. Using case studies and learnings from workplace teams, we examine: current UK workplace utilisation trends and benchmark what they reveal about our changing strategic priorities in CRE; the metrics that actually matter to a successful hybrid workplace; and how to successfully balance 'the art and science' of successful hybrid workplace.

## WORKPLACE INNOVATIONS IN THE UK/EUROPEAN REAL ESTATE LANDSCAPE

Chris Higgins, **Senior Programme Director, Workplace Real Estate and Facilities, GSK and Sol Enenmoh, Director & Deputy Group COO, Digital & Transformation, HSBC**

In this dynamic panel discussion, industry experts spotlight learnings from projects at critical stages of development exploring key considerations for attracting top talent, crafting hospitality-driven workplace experiences and aligning workplace developments with sustainable and responsible business practices.



## INNOVATION PLATFORM : UPFLEX



## LUNCH AND NETWORKING

### PEOPLE CENTRED WORKPLACES: CULTIVATING CULTURE & ENGAGEMENT

How can companies make the office an attractive proposition to employees who now have more choice in where and how they work? We examine the post pandemic impact on work, space, buildings and the effects on employee and company productivity and well-being, behaviour and culture .

## HUMAN CENTRED WORKPLACE EXPERIENCE

Filipa de Albuquerque, **Global Lead Workplace Experience, Roche**



At a time when workplace has never been more important to C-Suite, we examine the challenges of delivering workplace experience true to brand, culture and people. Roche, and its intrinsically scientific culture, extended an experimental approach to measurement of work and workplace. Looking at how it measures and captures data, what data is used, it examines employee cost efficiency, space efficiency and sustainability. Challenging Roche to embrace and experiment with IT tools, people, space and behaviour. Continual learning and development has enabled Roche to move the dial incrementally across its global portfolio. Christoph and Filipa share this journey, how far they've come and what lies ahead.

## CASE STUDY & VIRTUAL TOUR: BOOKING.COM'S NEW HQ AND VISION FOR THE FUTURE OF WORK

Marnix Mali, *Director of Real Estate and Workplace Services, Booking.com*

**Booking.com**

Join Marnix as he takes us behind the scenes of their newly opened headquarters in the heart of Amsterdam. This state-of-the-art campus, which began its journey in 2016, is the result of extensive research and numerous work style pilots designed to create the optimal environment for employee productivity and satisfaction. Marnix will share insights into how smart technology is used throughout the campus to gather data on space utilization, occupancy, and environmental conditions, allows for a data-driven approach to managing the workspace to support flexible working arrangements, ensuring the space can adapt to future needs driving decisions that enhance the work experience. He will also explore how the campus's flexible design, from adaptable event spaces to coworking areas in the central atrium, meets the evolving needs of a dynamic workforce. Discover how Booking.com has created a workplace that balances social interaction with individual productivity, setting a new standard for corporate real estate.

### DEEP DIVE: THE FUTURE OF WORK

These next sessions see us break out into 2 streams to deep dive issues across attracting top talent, how to craft hospitality-driven workplace experiences and align workplace with sustainable and responsible business practice



## STREAM 1: DATA AND TECHNOLOGIES

### DATA DRIVEN WORKPLACE

Bengt Lundberg, CEO, Disruptive Technologies

### EXPERT PANEL DEBATE: WORKPLACE INNOVATION – DATA, SENSORS AND BENCHMARKING

Speakers to be announced

This dynamic panel explores the transformative impact of data, sensors, and benchmarking in the modern workplace. Industry experts discuss how the integration of advanced sensors and data analytics is revolutionising operational efficiency, employee productivity, and business strategies. The panel will explore the role of benchmarking in setting performance standards, driving continuous improvement, and fostering a culture of innovation.

## STREAM 2: DESIGN AND EXPERIENCE

### FUTURE WORKPLACE | EMPLOYEE ENGAGEMENT

Imogen Privett, Associate Director of the Workplace Innovation team, UnWork confirmed, Andrew Thexton-Pee, Director of Property, Thames Water, Alyssa Jaffer, Senior Global Communications Manager

Industry experts discuss shifts to more experience-driven approaches to workplace design and the evolving priorities of leaders within the industry. How is the industry responding to the future of work in the long-term? And what can we learn from these large organisations about how to create and deliver great experiences? Also, as we move forward into a new era of work, how does future work consider under-represented groups? This session will explore how organisations can build more inclusive workplaces to ensure the future of work works for us all.

unwork

deliveroo



### REIMAGINE TEAMWORK WITH AI-POWERED COLLABORATION PLATFORM

Speakers to be announced

Dispersed teams and disconnected tools have created workplace complexity with more meetings, siloed communications, and information overload. Businesses must reimagine team collaboration to streamline communication, boost engagement, optimise in-person time, and enhance productivity.

### CASE STUDY - REVOLUTIONISING WORKPLACE EFFICIENCY: THE FUTURE OF MOBILE ACCESS CONTROL

James Kendall, Director of Enterprise Engineering, SwiftConnect and other speaker to be announced.

Hear how to integrate all of the systems that govern physical access in commercial real estate properties and multi-national organisations to enable employees to use their mobile devices as digital badges at single buildings and across entire office portfolios. Leveraging NFC technology, users simply present their Apple and Android devices to readers and locks for easy, connected access to places, spaces and, things – such as printers, lockers and more – even when their devices are in power reserve mode. See how SwiftConnect enables a seamless access journey that elevates the user experience, increases operational efficiency and enhances security.



## DRINKS, DJ & ROUNDTABLES

### THE NEW WORKPLACE REVOLUTION

What does the future of work and workplace look like? What strategies are organisations adopting and what is the impact on the built environment and commercial real estate?

## THINK TANK SESSIONS

Speakers to be announced



An interactive and collaborative session for delegates to come together to discuss and share insights from the day's presentations, while also providing an opportunity for networking and socializing. Delegates are divided into small, diverse groups to encourage a rich mix of perspectives. Each group is given a specific topic related to the day's themes, with participants taking turns sharing insights, reflections, and opinions on the topic. Each group has a pre-assigned representative to present a brief summary back to the audience, highlighting viewpoints and insights that emerged.



### Data for Change: Thriving in the Modern Workplace

As the pace of technological advancements accelerates, we explore digital transformation and share lessons learned in navigating the modern workplace's digital terrain. How can we leverage workplace data alongside emerging disruptors like AI and spatial computing to thrive in the digital era?



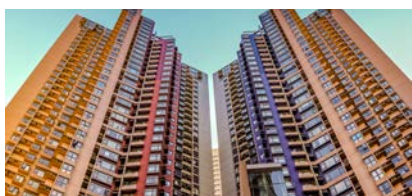
### Magnetising the Built Environment

As business leaders strive to instil purpose and meaning within their physical workplaces, how can we seamlessly merge the physical and digital realms and magnetize people to the office? What tools and strategies can be used to reinvigorate physical spaces and transform them into places of engagement and meaningful collaboration?



### Talent of the Future and the New Employee Value Prop

Let us delve into strategies for attracting, retaining, and harnessing the potential of tomorrow's workforce. What innovative approaches can be leveraged to enhance culture and bridge organizational needs with the aspirations of the next generation of employees?



### Getting to Net Zero

The ESG Imperative in Real Estate - With organizations accelerating efforts towards Net Zero and the ESG agenda, the impact on real estate and workplaces cannot be overlooked. From energy-efficient building designs to green certifications and beyond, how can companies lead the charge in transforming their spaces to meet Net Zero targets? What challenges and opportunities do these shifts present for the workplace of the future?



## THINK TANK EXCHANGE

## CLOSING KEYNOTE - FUTURE TECH: REIMAGINING WORKPLACE WITH AI

Speakers to be announced

Hear insights into the latest technologies including Microsoft Places, Co-Pilot and what they mean for new ways of working. How will it support workplace experience, improve employee connections and optimise workplace based on changing employee needs?

## CHAIRPERSON'S CLOSING REMARKS

Kasia Maynard, **Head of Research and Editorial, WORKTECH Academy**

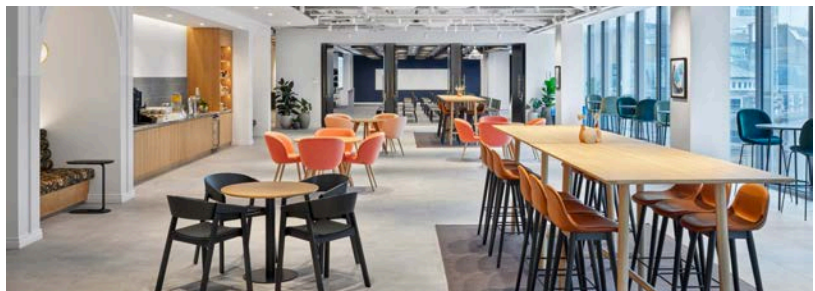
**WORKTECH** ACADEMY

This session brings together the outputs across the multiple tours, showcases, talks, and networking events that have taken place across London over the past two and a half days:

- Legal Roundtable
- Financial Roundtable
- Tours across the capital

## CONFERENCE CLOSES

## NETWORKING DRINKS



# OUR VENUE



## Convene, 22 Bishopsgate, London

22 Bishopsgate is the tallest tower at the heart of the City of London's financial district. Shaped to respect townscape views, its twenty-three-sided, faceted glass form makes a strong and serene backdrop to the surrounding articulated towers and to the historic fabric of the Bank of England Conservation Area.

The building is infused with smart technologies, from the front door to the glass façade and everything in between. Opt-in facial recognition technology removes the hassle for staff entry and QR entry codes sent with visitors' meeting invitations render the reception desk queue redundant. Roving receptionists greet and assist if required.

22 Bishopsgate is designed with the individual's well-being in mind. Art and craft, higher ceilings, increased daylight control, better fresh air and amenities combine to support individuals, in traditional and new ways of working. Outside of office area, approximately 100,000 square foot is dedicated to facilities that aim to improve the everyday experience for the building's users and the public.

## GETTING HERE

### VENUE ADDRESS

22 Bishopsgate,  
London,  
EC2N 4AJ

### PUBLIC TRANSPORTATION

The nearest tube stations to 22 Bishopsgate are:  
Liverpool Street Underground – 7-minute walk  
Monument – 7-minute walk

The nearest Train stations to 22 Bishopsgate are:  
Fenchurch Street – 9-minute walk  
Liverpool Street – 9-minute walk

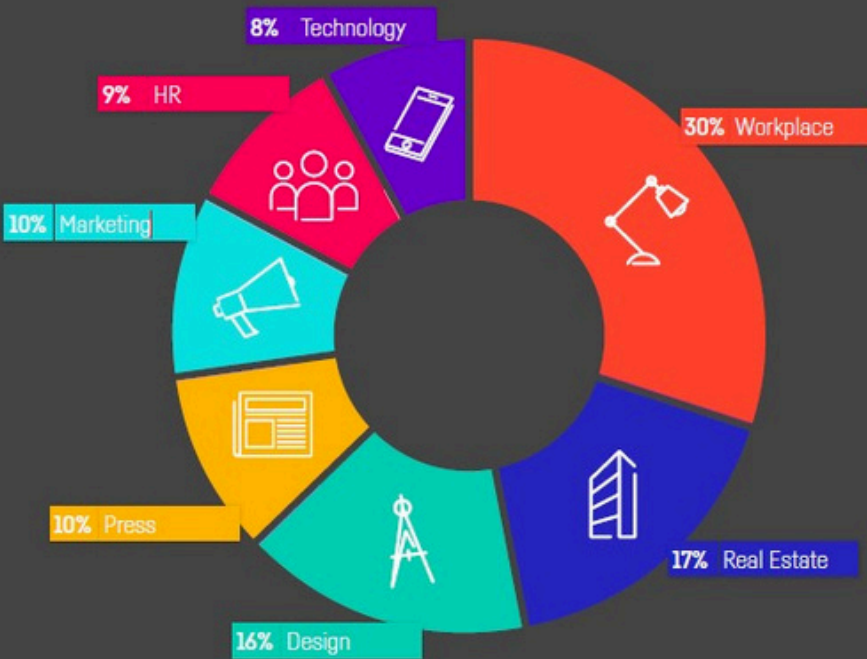
The nearest DLR Stations to 22 Bishopsgate are:  
Bank – 7-minute walk

Bus Stations near 22 Bishopsgate:  
Threadneedle Street (LN) -2-minute walk  
Wormwood Street (Y) – 3-minute walk  
Bishopsgate (R) – 4-minute walk  
Bishopsgate (N) – 4-minute walk  
All Hallows Church (U) – 6-minute walk

### PARKING

There is 24hr paid parking available at an NCP car park located a 17-minute walk away, also with electric car charging points available. Please note there is a max height of 1.98m.

# WHO ATTENDS



The choice of speakers was really inspiring offering great variety across a range of relevant topics.

DELEGATE, GSK



Informative, insightful, well planned, great speakers, something new every time!

DELEGATE, UNILEVER



# BOOK NOW

<https://worktechevents.com/events/worktech24-london/>

# KEY INFORMATION

## Date & Venue

When: Monday 18th- Wednesday 20th November  
Where: Convene, 22 Bishopsgate, London

## How to book:

Visit: <https://worktechevents.com/events/worktech24-london/>

## Offer a Special Rate to Your Network!

Become a marketing partner for this event and qualify for a special rate for your colleagues, complimentary passes for yourself, logo exposure for your organisation, and more!

If you are part of a group that would like to attend and are looking for a joint group rate please get in touch to arrange a bespoke ticket price.

## Become a WORKTECH Ambassador

We're looking for people that love the future of work and the workplace and social media. People who are willing to become part of our team and help spread the word to the masses. There will be a free event ticket available to successful applicants. Apply here: <https://bit.ly/3jiHC4b>

For more information on the above initiatives, please contact:  
[renee.saunders@worktechevents.co.uk](mailto:renee.saunders@worktechevents.co.uk)



7 St. John's Mews  
13 St. John's Road, Hampton Wick  
Kingston upon Thames, KT1 4AN, UK

+44 (0)20 89 77 89 20  
[info@unwired.eu.com](mailto:info@unwired.eu.com)

[www.worktechevents.com](http://www.worktechevents.com)