

WORKTECH™

Auckland

WORK / WORKPLACE / TECHNOLOGY / INNOVATION

EXPLORE THE FUTURE OF WORK AND THE WORKPLACE

VENUE: B:HIVE, SMALES FARM

THURSDAY 21ST MARCH

09:00 - 17:00 NZDT

Hosted by

SMALES
FARM

Platinum Sponsor



Silver Sponsors

biamp.

yellowbox

Bronze Sponsors

aspect♥ neat.

CMS Electracom

Supported by

empathix



eureplan INSPIRING
WORKSPACES

GreenAir

Harrows

unwork

WORKTECH ACADEMY



Conference Producer,
WORKTECH Events

A warm welcome to WORKTECH24 Auckland

WORKTECH is the fastest growing forum for all those involved in the future of work and the workplace as well as real estate, technology and innovation.

Never before has the workplace, and the way we work been so high on the agenda for organisations. As we make the great return to the office, how can organisations build engaging workplace experiences and cultures for their people?

You are invited to join 100+ senior professionals from real estate, facilities, HR, technology, executive management, architecture, design and professional advisors to listen to global thought leaders, and share best practice and expertise.

The conference will be run in one stream, which means our delegates will get to attend every speaker presentation. We will also have a curated innovation exhibition happening in the breakout areas for attendees to meet with our education partners, complementing learning throughout the day, as well as three networking breaks, creating time for attendees to meet the other participants

We hope you will be able to join us and we are looking forward to welcoming you to the event on 30th March.

Warmest regards,
Samantha

CONTENTS



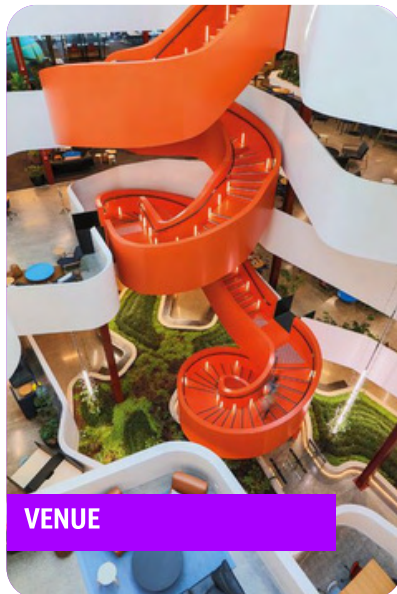
SPEAKERS



SESSIONS



CONFERENCE AGENDA



VENUE



WHO ATTENDS



KEY INFORMATION

MEET THE SPEAKERS

WORKTECH24 Auckland will attract some of the biggest and brightest names to debate, discuss, and divulge the latest thinking on the future of work and the workplace.

The conference will feature leading international thinkers from industry and academia. Our speakers represent some of the world's biggest brands and best universities and research departments, alongside radical visionaries from new innovative organisations.

Through interdisciplinary speakers and learning experience, we focus on bringing cutting edge ideas and inspiration to the workplace community to enhance creativity and move thinking forward. Instead of focusing on peer to peer innovation through imitation, we aim to curate a unique programme, bringing together experts in the fields of people, place and technology and relevant adjacencies to reflect on the future of work and workplace.

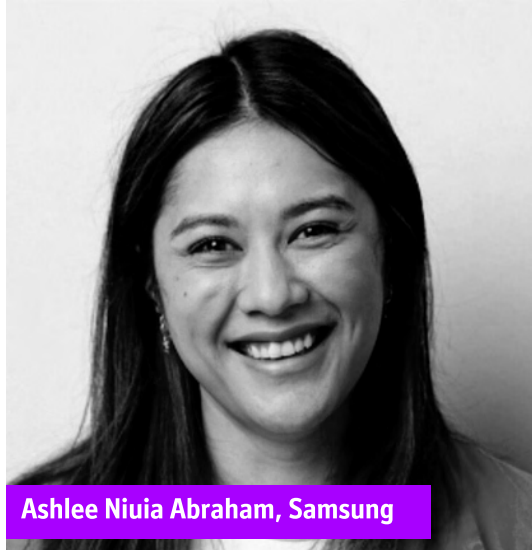
Alongside the conference series, the WORKTECH Academy knowledge hub explores the future of work through six key themes: people, place, technology, design, culture and innovation. Creating leading commentary, research and publications that places scientific research at the heart of key business problems. www.worktechacademy.com

Full list of speakers

Ashlee Niuia Abraham [Samsung New Zealand](#)
Adrian Brossard [Yellowbox](#)
Anna Campbell [Anna Campbell Ltd](#)
Dr. Dani Chesson [Design Thinker Institute](#)
David Ding [The Future Within](#)
Olivia Dyet [Empathix](#)
Graham Evans [Biamp](#)
Dr. Jarrod Haar [Massey University](#)
Melanie Ilich [Westpac](#)
Emma Kirkman [Anywhere Culture](#)
Marek Matuszewski [ANZ](#)
Primo Orpilla [Studio O+A](#)
Michelle Peralta [Devoli](#)
Heather Polglase [Spark New Zealand](#)
Guilherme Riederer [McKinsey & Company](#)
Sabri Sabri [Suncorp](#)
Kristie Smart [Studio DB](#)
Georgie Smith [FizzPopBANG](#)
Tessa Tierney [Spark New Zealand](#)
Dr. Amanda Wallis [Umbrella Wellbeing Ltd](#)



Dr Jarrod Haar, Massey University



Ashlee Niuia Abraham, Samsung



Michelle Peralta, Devoli



Marek Matuszewski, ANZ



Kristie Smart, Studio DB



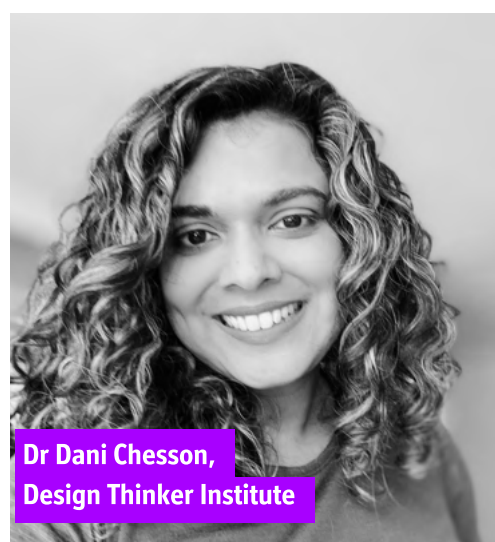
Heather Polglase, Spark



Guilherme Riederer, McKinsey



Sabri Sabri, Suncorp



**Dr Dani Chesson,
Design Thinker Institute**

CONFERENCE AGENDA

THURSDAY 21ST MARCH

VENUE: B:HIVE, SMALES FARM, 72 TAHAROTO ROAD

09:00 - 17:00 NZDT

08:30 | CONFERENCE OPENS

09:00 | CHAIRPERSON'S OPENING REMARKS

Emma Kirkman, Co-Founder, Anywhere Culture



09:15 | LEADING THE WAY: DESIGNING OPERATING MODELS FOR THE FUTURE

Guilherme Riederer, Partner,
McKinsey & Company

McKinsey
& Company

In today's increasingly complex and dynamic business environment, the call for modernisation in operating models is clear. New Zealand's businesses are primed to pioneer this transition, holding a unique advantage in shaping a more agile, efficient, and sustainable future. This session will look at actionable tips and tricks for leaders, emphasising the importance of nurturing talent, fostering innovative cultures, and harnessing cutting-edge technologies like gen AI to boost efficiencies and elevate customer experiences.

09:35 | FIRESIDE CHAT: SPARK'S OPERATING MODEL ADOPTION

Guilherme Riederer, Partner,
McKinsey & Company / Tessa
Tierney, Product Director, Spark
New Zealand

McKinsey
& Company



Spark^{nz}

Join us for a fireside chat with Guilherme Riederer and Tessa Tierney, Product Director at Spark New Zealand, as they delve into the future of operating models. Tessa will share insights from her experience in implementing Spark's new operating model, offering valuable perspectives on adaptation and innovation in the digital age.

09:55 | RATIONALISING WORKPLACE FOOTPRINTS BY UNDERSTANDING THE EMPLOYEE EVOLUTION

Kristie Smart, Head of Strategy
and Design, Studio DB



Kristie's presentation will focus on fostering a deeper understanding of the staff's needs in the workplace, aiming to rationalise the organisational footprint. She will delve into the evolution of the workplace from 2004 to 2024 and offer insights into potential changes by 2024. Additionally, Kristie will discuss the Employee Evolution Index®, a tool developed by Studio DB. She utilises this tool in her team to collect data through pre and post workplace satisfaction surveys.

10:30 | NETWORKING & COFFEE BREAK

11:00 | NEW ZEALAND WORKFORCE USE OF AI AT WORK: THE GOOD, THE BAD, AND THE UGLY

Prof Jarrod Haar, PhD, FRSNZ,
CFHRNZ, Dean's Chair and
Professor of Management and
Māori Business, Massey
University



The presentation will describe the use of AI at work from a large study of the New Zealand workforce. It will describe the frequency and depth of AI use at work and provide insights into what organisational characteristics drive its use and the positive and detrimental effects of use.

CONFERENCE AGENDA

THURSDAY 21ST MARCH

VENUE: B:HIVE, SMALES FARM, 72 TAHAROTO ROAD

09:00 - 17:00 NZDT

11:30 | EXPERT PANEL: WORKPLACE PILOTS AND INNOVATIONS

Sabri Sabri, **Executive Manager, Engineering Practice NZ, Suncorp** / Marek Matuszewski, **Head of Technology, NZ Employee Experience, ANZ** / Olivia Dyet, **Founder and Director, Empathix**

Explore innovative approaches to creating and measuring flexible and adaptable workspaces and smart environments that enhance employee well-being, productivity, and engagement in this enlightening and dynamic discussion. The panel's focus will be on sharing priorities and innovations, introducing pilots, and highlighting the wins, the surprises, and the learnings so far.



12:00 | INTERACTIVE GROUP DISCUSSION



12:10 | SMART LOCKERS 2.0

Adrian Brossard, **Founder & Head of Partnerships, Yellowbox**



12:15 | MODERN WORKPLACE SOLUTIONS BY BIAMP

Graham Evans, **Executive Advisor, Biamp**



12:20 | NETWORKING & LUNCH BREAK

13:20 | EXPERT PANEL: NAVIGATING THE FUTURE OF EMPLOYEE EXPERIENCE AND THE TALENT-CULTURE-INCLUSION NEXUS

Moderator: Dr. Dani Chesson, **Founder & Director, Design Thinker Institute** / Heather Polglase, **People, Culture and Ways of Working Director, Spark NZ** / Melanie Ilich, **Head of Employee Experience, Westpac New Zealand** / Ashlee Nuia Abraham, **Head of People, Samsung** / Michelle Peralta, **People & Culture Lead, Devoli**

In this insightful panel discussion, we bring together distinguished people and culture leaders who will delve into critical aspects of modern workplace dynamics and share their perspectives on navigating the ever-evolving landscape of employee experience. We will explore the challenges and opportunities leaders face today and examine the importance of building inclusive and adaptable workplace cultures, attracting and retaining top talent, empowering employees and fostering organizational wellbeing.



Sparknz



SAMSUNG



14:00 | INTERNATIONAL CASE STUDY: ADIDAS PORTLAND HEADQUARTERS

Primo Orpilla, **Co-Founder and Principal, Studio O+A**



This session spotlights Adidas' market-leading North American headquarters development in Portland, Oregon, which has received international recognition for its environmental impact and sustainability efforts embedded throughout the project. Led by Studio O+A, who's groundbreaking designs for Facebook, Microsoft, Yelp, Nike, McDonald's, Slack and many other companies have demonstrated the power of design to make the work environment a catalyst for creativity and a vehicle for change.

14:30 | NETWORKING & COFFEE BREAK

CONFERENCE AGENDA

THURSDAY 21ST MARCH

VENUE: B:HIVE, SMALES FARM, 72 TAHAROTO ROAD

09:00 - 17:00 NZDT

15:00 | ELEVATING THE FUTURE OF WORK - THINK TANK BREAKOUT DISCUSSIONS

Join our interactive think tank discussion groups, where we explore the future of work's most compelling topics. Alongside, keynote presentations and expert panel discussions from industry experts, we are excited to be introducing a new think tank session into our program.



NEW PARADIGMS OF WORK

The post-pandemic era has given rise to new paradigms of work, including decentralized teams and flexible schedules. As business leaders strive to instil purpose and meaning within their physical workplaces, how can organizations proactively adapt to this "post-peak" office era and ensure that their workplaces remain conducive to collaboration, innovation, and employee well-being?



TALENT OF THE FUTURE AND THE NEW EMPLOYEE VALUE PROP

Let's delve into strategies for attracting, retaining, and harnessing the potential of tomorrow's workforce. What innovative approaches can be leveraged to enhance culture and bridge organizational needs with the aspirations of the next generation of employees?



DIGITAL TRANSFORMATION: THRIVING IN THE MODERN WORKPLACE

As the pace of technological advancements accelerates, we explore digital transformation and share lessons learned in navigating the modern workplace's digital terrain. How can we leverage workplace data alongside emerging disruptors like AI and spatial computing to thrive in the digital era?

15:45 | PRIORITISING PSYCHOLOGICAL WELLBEING AT WORK (IN THE AGE OF CONSTANT AVAILABILITY)

Dr. Amanda Wallis, **Research, Development & Innovation Lead**,
Umbrella Wellbeing Ltd.



In a world where work travels with us everywhere we go, it can feel harder and harder to switch off. Amanda's presentation will cover some of the latest research on prioritising psychological wellbeing in the workplace – focusing on the impact of working longer hours and being constantly "available". She will outline when our relationship with work moves from helpful to harmful, and share three key evidence-based strategies for keeping ourselves, and others, in the green zone.

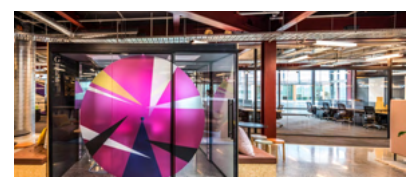
16:15 | CHAIRPERSON'S CLOSING REMARKS

Emma Kirkman, **Co-Founder**, Anywhere Culture



16:30 | B:HIVE WORKPLACE TOURS

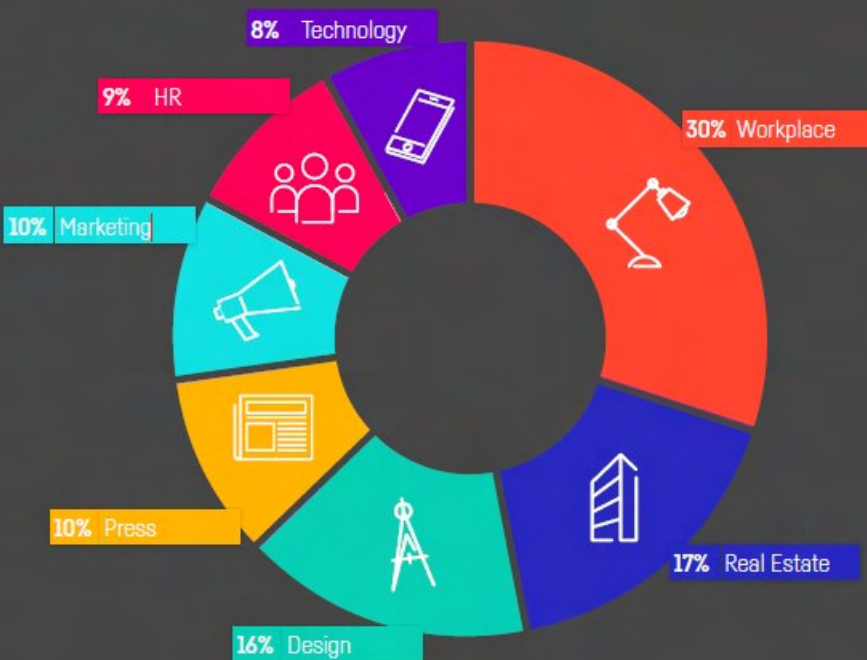
All attendees are invited to join an exclusive guided tour of the B:HIVE at the end of the conference.



17:00 | CONFERENCE CLOSES

WWW.WORKTECHEVENTS.COM/EVENTS/WORKTECH24-AUCKLAND/

WHO ATTENDS



A well-spoken and experienced group of presenters providing leading edge subjects current topics and statistics. A great place to learn about new ideas.

WORKTECH DELEGATE, DELOITTE



Informative, interesting views on workplace design, planning technology and workers

WORKTECH DELEGATE, BANK OF MONTREAL



BOOK NOW

www.worktechevents.com/events/worktech24-auckland/

KEY INFORMATION

Date

When: Thursday, 21st March

Where: B:HIVE, Smales Farm

How to book:

Visit: www.worktechevents.com/events/worktech24-auckland/

Offer a Special Rate to Your Network!

Become a marketing partner for this event and qualify for a special rate for your colleagues, complimentary passes for yourself, logo exposure for your organisation, and more!

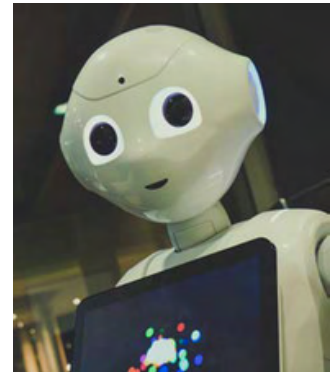
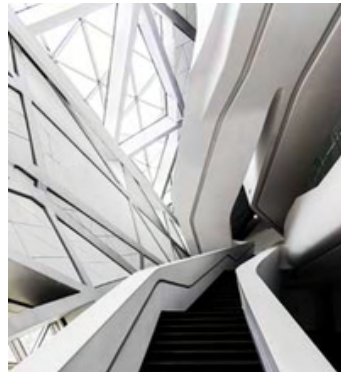
If you are part of a group that would like to attend and are looking for a joint group rate please get in touch to arrange a bespoke ticket price.

Become a WORKTECH Ambassador

We're looking for people that love the future of work and the workplace and social media. People who are willing to become part of our team and help spread the word to the masses. There will be a free event ticket available to successful applicants.

For more information on the above initiatives, please contact:

kirsty.darlington@worktechevents.co.uk



WORKTECH™

WORK / WORKPLACE / TECHNOLOGY / INNOVATION

7 St. John's Mews

13 St. John's Road, Hampton Wick

Kingston upon Thames, KT1 4AN, UK

+44 (0)20 89 77 89 20

info@unwired.eu.com

www.worktechevents.com