

WORKTECH™ London

WORK / WORKPLACE / TECHNOLOGY / INNOVATION

TWENTY YEARS OF
WORKTECH

20

EST. 2003

EXPLORE THE FUTURE OF WORK AND THE WORKPLACE

CONVENE, 22 BISHOPSGATE, LONDON

TUESDAY 21ST - WEDNESDAY 22ND NOVEMBER

HOST SPONSOR

convene™

GOLD SPONSORS

Haltian INGY

smartspaces

SIMMTRONIC

SAMSUNG

PLATINUM SPONSOR

CISCO

SILVER SPONSORS

deskbird

yellowbox

neat.

BRONZE SPONSORS

Freespace.

scanomat

VECOS your
The Smart Locker System WORKSPACE

SONY **DAS**

AQUA LIBRA **hp** Workforce Solutions

BESPOKE SPONSOR

Cordless Consultants

VIP DINNER SPONSOR

VERGE SENSE

SUPPORTED BY

workplace GEEKS **unwork**
powered by outlin devIT

FMJ **10times**
FACE RECOGNITION SPECIAL

Office **10times**
THE OFFICE OF WORKPLACE

WORKTECH ACADEMY



Caroline Bell

Managing Director,
WORKTECH Events

A warm welcome to WORKTECH23 London

WORKTECH23 London is the conference for all those involved in the future of work and the workplace as well as real estate, technology and innovation.

WORKTECH brings innovative ideas and inspiration to the workplace community through inter-disciplinary speakers and learning experience to enhance creativity and move thinking forward.

Join over 250 senior professionals from real estate, facilities, HR, technology, executive management, architecture, design and professional advisors to listen to global thought leaders, further their knowledge and share best practise and expertise.

WORKTECH23 London is a two-day event. Alongside the conference, we will have a curated innovations exhibition taking place in the breakout areas for attendees to meet with our education partners, complementing learning during the day.

On each day, there will be networking breaks, allowing attendees time to meet the other participants. After the conference closes, all delegates will be invited to continue networking at the WORKTECH drinks reception.

We hope you will be able to join us and we are looking forward to welcoming you to the event on November 21st-22nd.

Warmest regards,
Caroline

CONTENTS



SPEAKERS



SESSIONS



CONFERENCE AGENDA



VENUE



WHO ATTENDS



KEY INFORMATION

MEET THE SPEAKERS



WORKTECH23 London will attract some of the biggest and brightest names to debate, discuss, and divulge the latest thinking on the future of work and the workplace.

The conference will feature over 50 speakers, including leading international thinkers from industry and academia.

Through interdisciplinary speakers and learning experience, we focus on bringing cutting edge ideas and inspiration to the workplace community to enhance creativity and move thinking forward. Instead of focusing on peer to peer innovation through imitation, we aim to curate a unique programme, bringing together experts in the fields of people, place and technology and relevant adjacencies to reflect on the future of work and workplace.

Alongside the conference series, the WORKTECH Academy knowledge hub explores the future of work through six key themes: people, place, technology, design, culture and innovation. Creating leading commentary, research and publications that places scientific research at the heart of key business problems. www.worktechacademy.com

Full list of speakers

Adrienne Lau [Heatherwick Studio](#)
Ameera Kawash [Orbital Bloom](#)
Andrew Vincent [The Domino's Group](#)
Anna Taylor [Burgess Salmon LLP](#)
Arraz Makhani [Unwork](#)
Bastiaan de Groot [Ingy](#)
Ben Read [MSL UK](#)
Ben Rogers [European Cities LSE Cities](#)
Chris Ault [Samsung](#)

Chris Hyder [Cisco](#)
Clarissa Vollmeier [Cisco](#)
Craig Bennett [Convene](#)
Dan Drogman [Smart Spaces](#)
Daniel Hulme [Satalia & WPP](#)
Echo Callaghan [WORKTECH Academy](#)
Eddie Twemlow [Burgess Salmon](#)
Edwin Heathcote [The Financial Times](#)
James Frankis [Convene](#)
Jeremy Myerson [WORKTECH Academy](#)
Jess Costanzo [Simmtronic](#)
Joe White [Cushman & Wakefield](#)
John McGinley [Neat](#)
Katherine Harvey [Unwork](#)
Laura Citron [London & Partners](#)
Linzi Cassells [Perkins and Will](#)
Liz Helyer [Cisco](#)
Louise Morgan [Laing O'Rourke](#)
Mark Nallen [Cisco](#)
Meg Jarman [McDonald's](#)
Nicole Brocklebank-Fowler [Clifford Chance](#)
Pe-Ru Tsen [Boston Consulting Group](#)
Rebecca Gridley [NHS](#)
Ravi Lakhani [Cordless Consultants](#)
Richard Clark [Burgess Salmon LLP](#)
Rhian Windridge [Google](#)
Rob Garlick [Citi Global Insights](#)
Sam Tucker [Deskbird](#)
Sam Wood [Cisco](#)
Shelley James [Author, TEDx Speaker](#)
Shira Waschmann [Orbital Bloom](#)
Simon Allford [Allford Hall Monaghan Morris](#)
Sol Enemoh [HSBC](#)
Uli Blum [Zaha Hadid Architects](#)
Valeria Winkworth [EY](#)
Vanessa Zhao [Yellowbox](#)
Will Jackson [Cisco](#)



Anna Taylor, Burges Salmon LLP



Meg Jarman, McDonald's



Dan Drogman, Smart Spaces



Daniel Hulme, Satalia & WPP



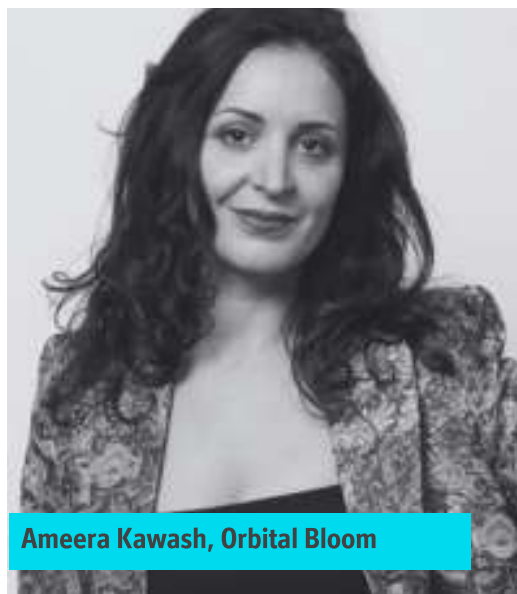
Pe-Ru Tsen Boston Consulting Group



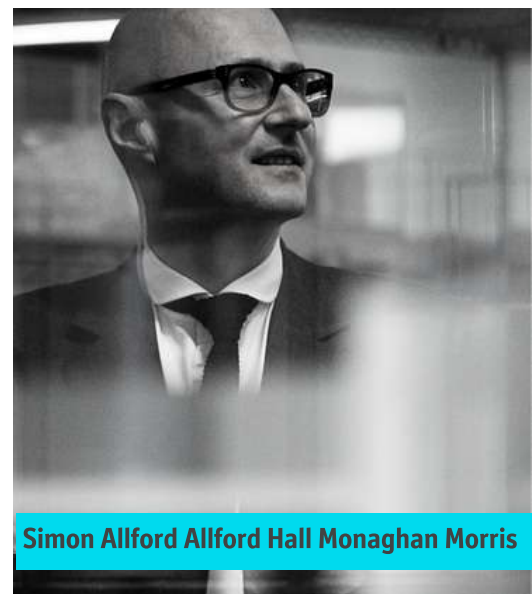
Uli Blum Zaha Hadid Architects



Edwin Heathcote, The Financial Times



Ameera Kawash, Orbital Bloom



Simon Allford Allford Hall Monaghan Morris



Rhian Windridge, Google



Ben Rogers, European Cities LSE Cities



Laura Citron London & Partners

SESSION HIGHLIGHTS

Key themes we will be discussing at this event include:

[The Future of Living and Working in World Cities](#)

Unique perspectives on people, space and culture in the context of a fragile and uncertain world still struggling with the effects of living and working in the shadow of a global pandemic. We explore the challenges, discuss new ideas & opportunities for the future of work.

[The Future of London](#)

We examine the innovation, placemaking, planning and leadership at the centre of creating a large proportion of London's most iconic developments and look at how London is evolving in terms of buildings and place; how it is responding to the needs of business and employees; and what implications for sustainability, inclusivity, and wellbeing.

[New Digital Technologies transforming Work](#)

From the metagora to the metaverse, digital assistants in Teams, to the impact of AI recruiting tools to industrial automation and robotic assistants and AV intelligence, new digital technologies are transforming the modern workplace. We explore some of the key issues and challenges affecting all our futures.

[Sustainable Futures: Rethinking Work, Architecture and Design](#)

In the wake of the global pandemic, we have accelerated shifts in our understanding of how we work, where we work, and the impact of our work on the planet. These sessions explore the pivotal challenges and opportunities that lie ahead as we envision a more sustainable, resilient and purpose-driven future.

[Workplace Experience](#)

Companies are accelerating plans to invest in new technology, create flexible working environments and make the office a destination. We will examine the latest workplace technologies and innovations that will support workplace experience and the built environment in 2023 and beyond.

[People Centred Workplaces: Cultivating Culture, Collaboration & Engagement](#)

How can companies make the office an attractive proposition to employees who now have more choice in where and how they work? How can we create positive workplace experience and seamless collaboration in our new hybrid world. We examine the post pandemic impact on work, space, buildings and the effects on employee and company productivity and well-being, behaviour and culture.

KEY THEMES

THE FUTURE OF LIVING AND WORKING IN WORLD CITIES

THE FUTURE OF LONDON

NEW DIGITAL TECHNOLOGIES TRANSFORMING WORK

SUSTAINABLE FUTURES: RETHINKING WORK, ARCHITECTURE AND DESIGN

WORKPLACE EXPERIENCE

PEOPLE CENTRED WORKPLACES: CULTIVATING CULTURE, COLLABORATION & ENGAGEMENT



Humanising Cities

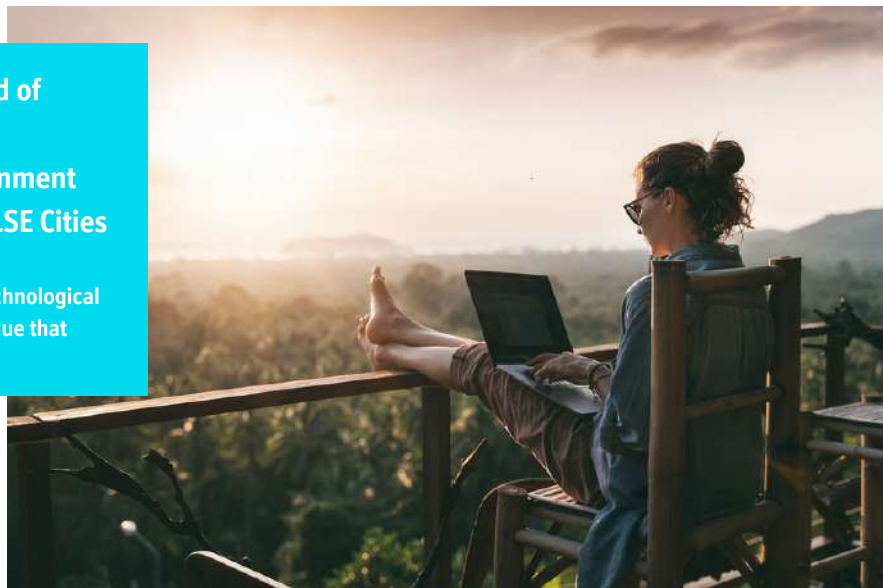
Adrienne Lau, Senior Associate & Project Leader, Heatherwick Studio and Lead across Google in the US and in Kings Cross

Heatherwick Studio believes that emotion is the crucial ingredient that is missing in so much of design today. Who is really thinking about how to make buildings, places and spaces mean something to us - to lift our spirits and connect us? What does bringing humanity back into our buildings and cities mean for workplaces of the future? In her keynote for this conference, Adrienne Lau, Senior Associate & Project Leader at Heatherwick Studio, will talk through some key projects, including Google's US and UK headquarter campuses, and explain how an understanding of emotion shapes how the studio works across all scales and typologies.

From Teams to Teams: The Future of Cities in the World of Remote Work and AI

Ben Rogers, Bloomberg Distinguished Fellow in Government Innovation and Director, European Cities Programme LSE Cities

In this keynote talk Ben Rogers will explore what the current wave of technological disruption means for the future of our cities and city workplaces and argue that cities will need to re-imagine their nature as meeting places.



Q&A: Sorting Fact from Fiction on AI and the Future of Work

Daniel Hulme, CEO, Satalia and Chief AI Officer, WPP and Echo Callaghan, Writer and Researcher, WORKTECH Academy

What will the world start to look like in 2024 and beyond? What impact has Rishi Sunak's Global conference on AI had? What are the issues for cyber security, how we protect data, clients, employees? And will AI turbo charge these threats? Echo Callaghan, leads this debate with Daniel Hulme on the ways in which AI will and won't transform the world and the workplace, aiming to cut-through the dialogue about chat-bots and artificial intelligence and get to the specifics of how these technologies affect us all. Covering topics such as sustainability, AI ethics, the impact of new technology on the jobs market and setting AI in-context with other major technology trends, we explore where AI is headed in coming years and how we can best prepare for the transformations it will bring.

08:30 DAY 1: CONFERENCE OPENS

08:30 REGISTRATION AND PRE EVENT NETWORKING

09:00 CHAIRPERSON'S WELCOME

Katherine Harvey, Global Consultancy Director, UnWork



09:10 WELCOME TO CONVENE

Craig Bennett, UK Area General Manager, Convene



THEME: THE FUTURE OF LIVING AND WORKING IN WORLD CITIES

Unique perspectives on people, space and culture in the context of a fragile and uncertain world still struggling with the effects of living and working in the shadow of a global pandemic. We explore the challenges, discuss new ideas & opportunities for the future of work

09:15 FROM TEAMS TO TEAMS: THE FUTURE OF CITIES IN THE WORLD OF REMOTE WORK AND AI

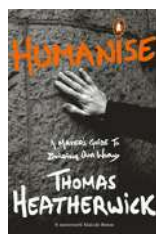
Ben Rogers, Bloomberg Distinguished Fellow in Government Innovation and Director, European Cities Programme LSE Cities

In this keynote talk Ben Rogers will explore what the current wave of technological disruption means for the future of our cities and city workplaces and argue that cities will need to re-imagine their nature as meeting places.



09:45 HUMANISING CITIES

Adrienne Lau, Senior Associate & Project Leader, Heatherwick Studio and Lead across Google in the US and in Kings Cross



Heatherwick Studio believes that emotion is the crucial ingredient that is missing in so much of design today. Who is really thinking about how to make buildings, places and spaces mean something to us - to lift our spirits and connect us? What does bringing humanity back into our buildings and cities mean for workplaces of the future? In her keynote for this conference, Adrienne Lau, Partner and Group Leader at Heatherwick Studio, will talk through some key projects, including Google's US and UK headquarter campuses, and explain how an understanding of emotion shapes how the studio works across all scales and typologies.

10:15 COFFEE AND NETWORKING

THEME: THE FUTURE OF LONDON

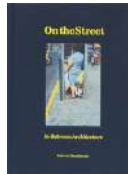
We examine the innovation, placemaking, planning and leadership at the centre of creating a large proportion of London's most iconic developments and look at how London is evolving in terms of buildings and place; how it is responding to the needs of business and employees; and what implications for sustainability, inclusivity, and wellbeing.

10:45 ARCHITECTURE, THE MEDIA AND LONDON

Jeremy Myerson, **Director, WORKTECH Academy** and Edwin Heathcote, **Architecture and Design Critic of The Financial Times**

WORKTECH ACADEMY

FINANCIAL TIMES



In this session, Edwin Heathcote, architecture and design critic of The Financial Times since 1999, will discuss the role of architecture in sustaining London as a world capital and the role of the media in shaping the discourse around its key design characteristics. In conversation with Jeremy Myerson, Director of WORKTECH Academy, Heathcote will draw on his latest book *On The Street: In-Between Architecture* and on his experiences as a writer, architect and designer.

11:20 EXPERT PANEL: THE FUTURE OF LONDON – TECHNOLOGY AND INFRASTRUCTURE

Moderated by Arraz Makhani, **Development Director, Unwork** with Dan Drogman, **CEO and Founder, Smart Spaces**, Jess Costanzo **Commercial Director, Simmtronic Limited**, Nicole Brocklebank-Fowler, **Global Head of Property Portfolio, Clifford Chance** and Bastiaan de Groot, **CEO, Ingy**

This session examines the innovation, placemaking, planning and leadership at the centre of creating a large proportion of London's most iconic developments. We examine perspectives on how London is evolving in terms of buildings and place; how it is responding to the needs of business and employees; what implications for sustainability, inclusivity and wellbeing



12:00 RE-INTERPRET WHAT HYBRID MEANS

Sam Wood, **Practice Leader: Future Workplace, Smart and Sustainable Environments, Americas and EMEA**, Clarissa Vollmeier, **Collaboration Hybrid Work Lead**, Liz Helyer, **Hybrid Work Business Solutions Architect**, Chris Hyder, **Smart Buildings Specialist**, Mark Nallen, **Partner Sales Business Development Manager - Hybrid Work** and Will Jackson, **Business Development Manager, Cisco**

From inclusivity to AI, join this session to understand the most effective enablers to build a dynamic culture. We'll discuss the need to refrain from relying on pandemic purchases to overcome post-pandemic challenges and explore how IT, HR, facilities, and sustainability teams can achieve a unified strategy for hybrid work and why it is still necessary today.



12:25 INNOVATION PLATFORM

Sam Tucker, **Growth Manager, Deskbird**



12:30 LUNCH AND NETWORKING

THEME: NEW DIGITAL TECHNOLOGIES TRANSFORMING WORK

From the metagora to the metaverse, digital assistants in Teams, to the impact of AI recruiting tools to industrial automation and robotic assistants and AV intelligence, new digital technologies are transforming the modern workplace. We explore some of the key issues and challenges affecting all our futures.

13:35 AI AND ITS IMPACT ON BUSINESS AND HUMANITY

Daniel Hulme, CEO, Satalia and Chief AI Officer, WPP



Daniel provides a framework for how people should think about AI (especially Generative AI), with entertaining examples and anecdotes. He argues that whilst these technologies are incredible at creating growth and streamlining operations, for companies to stay innovative they need to use AI to unlock the creative capacity of their workforce. Daniel will also cover the macro impact these technologies may have over the coming decades and suggests that it's within the gift of enterprise to make a better future for everyone.

13:55 Q&A: SORTING FACT FROM FICTION ON AI AND THE FUTURE OF WORK

Daniel Hulme, CEO, Satalia and Chief AI Officer, WPP and Echo Callaghan, Writer and Researcher, WORKTECH Academy



What will the world start to look like in 2024 and beyond? What impact has Rishi Sunak's Global conference on AI had? What are the issues for cyber security, how we protect data, clients, employees? And will AI turbo charge these threats? Echo Callaghan, leads this debate with Daniel Hulme on the ways in which AI will and won't transform the world and the workplace, aiming to cut-through the dialogue about chat-bots and artificial intelligence and get to the specifics of how these technologies affect us all. Covering topics such as sustainability, AI ethics, the impact of new technology on the jobs market and setting AI in-context with other major technology trends, we explore where AI is headed in coming years and how we can best prepare for the transformations it will bring.

14:10 HOW SMART HOSPITALS ARE USING LOCATION DATA TO TRANSFORM HEALTHCARE

Rebecca Grindley, MKUH New Hospital Programme Director, NHS



Location intelligence is revolutionizing the way hospitals operate. By using location data they create a more efficient, sustainable, and patient-centered workplace, that supports finding equipment to improving staff collaboration to reducing energy consumption. This session examines how the NHS is using location data to improve staff productivity and collaboration, optimize resource utilization, reduce energy consumption and enhance patient safety and experience.

14:35 INNOVATION PLATFORM

Vanessa Zhao, Co-founder and Director for the UK, Yellowbox



14:40 COFFEE AND NETWORKING

CONVENE, 22 BISHOPSGATE, LONDON

15:10 EXPERT PANEL: DIGITAL TRANSFORMATION: THRIVING IN THE MODERN WORKPLACE

Moderated by Joe White, Partner – Global Technology Solutions & Client Care Lead, Technology and Data Solutions, Cushman & Wakefield with Sol Enemoh, Director, Group Deputy COO Digital & Transformation, HSBC, Rob Garlick, Head of Innovation, Technology & the Future of Work, Citi Global Insights, and Chris Ault, Business Development & Consultant Lead, Samsung

As the pace of technological advancements accelerates, this panel explores digital transformation and shares lessons learned in navigating the modern workplace's digital terrain. We examine the challenges, opportunities, and strategies organisations must embrace to thrive in the dynamic and ever-evolving future of work. It looks at how by embracing technological advancements, fostering a culture of adaptability, and empowering their workforce, organisations can embrace the digital era.



16:00 KNOWLEDGE EXCHANGE MIXER



An interactive and collaborative session for delegates to come together to discuss and share insights from the day's presentations while also providing an opportunity for networking and socializing. Delegates are divided into small, diverse groups to encourage a rich mix of perspectives and each group is given a specific topic related to the day's themes for discussion. In roundtable format, delegates take turns sharing insights, reflections, and opinions on the topic. Each group has a pre-assigned representative to present a brief summary back to the audience highlighting viewpoints and insights that emerged.

16:40 KNOWLEDGE EXCHANGE MIXER: CLOSING DEBATE

We conclude with an engaging and dynamic session designed to harness the delegates' perspectives and collective wisdom. Designed to summarise the day's vibrant exchange of ideas, insights, and experiences, delegates have the opportunity to ask questions and seek clarification on the insights shared by other groups fostering a cross-pollination of ideas and further enriching discussion. This closing interactive debate aims to be a powerful culmination of the Knowledge Exchange Mixer, to leave delegates inspired, informed, and connected.

16:55 CHAIRPERSON'S CLOSING REMARKS

Katherine Harvey, Global Consultancy Director, UnWork



17:00 NETWORKING DRINKS

18:00 DAY 1 CLOSSES

08:30 DAY 2: CONFERENCE OPENS

08:30 REGISTRATION AND PRE EVENT NETWORKING

09:00 CHAIRPERSON'S WELCOME

Echo Callaghan, Researcher and Writer, WORKTECH Academy



THEME: SUSTAINABLE FUTURES: RETHINKING WORK, ARCHITECTURE AND DESIGN

In the wake of the global pandemic, we have accelerated shifts in our understanding of how we work, where we work, and the impact of our work on the planet. These sessions explore the pivotal challenges and opportunities that lie ahead as we envision a more sustainable, resilient and purpose-driven future.

09:10 WHY LONDON IS STILL THE BEST PLACE TO WORK AND DO BUSINESS

Laura Citron, CEO, London & Partners



Laura explores what makes the capital an international success and how it can build on that into the future sharing insights into making the city a magnet - for talent, investment and creativity.

09:40 ARCHITECTURE'S PIVOTAL ROLE IN CONSTRUCTING A DELIGHTFUL LOW CARBON FUTURE

Simon Allford, Architect and Co-Founder, Allford Hall Monaghan Morris and Jeremy Myerson, Director, WORKTECH Academy & Research Professor, RCA

During this discussion Simon and Jeremy examine the global challenges we face, addressing the design and reinvention of the working, playing and living environment in the long life, loose fit, low carbon future



10:10 INNOVATION PLATFORM

John McGinley, Sales - EMEA, Neat



10:15 COFFEE AND NETWORKING

10:45 MAKING LIGHT WORK - FROM THE SPACE STATION TO THE WORKSTATION

Dr Shelley James, 'The Light Lady',
Author, TEDx Speaker



Discover how lighting designed for the space station is transforming the future of the workplace down here on Earth. Learn how these discoveries are shaping the next generation of technologies, standards and regulations. Take away practical tips for your home office to improve productivity, sleep - and even help you look better on zoom.

11:15 EXPERT PANEL: FUTURE-FORWARD WORKPLACES

Moderated by Ravi Lakhani, **Smart Solutions Lead, Cordless Consultants** with James Frankis, **VP of Product, Convene**, Pe-Ru Tsen, **Global Digital Workplace Strategy Senior Director, Boston Consulting Group**, Louise Morgan, **Digital Development Director, Laing O'Rourke** and Uli Blum, **Senior Associate, Zaha Hadid**

Based on the social, economic political and technical trends impacting the future of the office, this session represents architect, developer, project management and technology perspectives and explores how to best navigate trends in placemaking and smart building design. We examine how organisations are addressing the challenges of creating and managing attractive, efficient, sustainable, renewable and safe places to work; how buildings can learn and adapt to occupiers through soft landings and continuous iteration. We share some first-hand experience from companies going through change and explore the importance of setting performance-based benchmark targets in creating demand-led portfolios.



convene™



Zaha Hadid

11:50 CASE STUDY: BURGESS SALMON. THE POWER OF WORKPLACE, CONNECTING FOR SUCCESS

Richard Clark, **Partner and Chair of Real Estate Sector**, Anna Taylor, **Change Manager** and Eddie Twemlow, **Head of IT and Operations, Burgess Salmon LLP**



This session examines the evolution of agile workplace and offers invaluable lessons about the relationship between design, emotion and business success. For Burgess Salmon, success initially hinged on recruiting the right talent and securing profitable work. Office design mirrored traditional legal models with hierarchies and specialized practice areas; the need for a more agile setup became evident but met with resistance. The pandemic led a transition to remote working and despite high productivity, it was apparent culture would suffer without the office and human connection. The challenging post-pandemic economy, intensified talent competition and a prioritisation of employee wellbeing, forced a rethink about office design and its influence on culture. Now, a unifying office space is crucial for ongoing business success. This presentation shares insights gained and offers practical recommendations.

12:15 LUNCH AND NETWORKING

THEME: PEOPLE CENTRED WORKPLACES: CULTIVATING CULTURE, COLLABORATION & ENGAGEMENT

How can companies make the office an attractive proposition to employees who now have more choice in where and how they work? How can we create positive workplace experience and seamless collaboration in our new hybrid world. We examine the post pandemic impact on work, space, buildings and the effects on employee and company productivity and well-being, behaviour and culture.

13:15 TRANSFORMING WITH HUMANS AT THE CENTRE

Dr Valeria Winkworth, **Director, People Advisory Services, EY**



In today's rapidly evolving business landscape, successful and continuous transformation is imperative for survival. EY's new research, conducted in collaboration with Oxford University's Saïd Business School, reveals that the key to transformation success lies in understanding and addressing human emotions. Leaders who prioritize workforce emotions are 2.6 times more likely to achieve success. Additionally, over half of high-performing transformations credit emotional support as a crucial factor. Dr Valeria shares insights from nearly 1,000 senior leaders, direct reports, and over 1,000 workforce members across 23 countries and 16 industries to reveal six pivotal drivers of human behaviour that can more than double the likelihood of successful transformation when executed effectively. Join us to hear immediate steps your organization can take to ensure transformative success.

13:45 EVOLVING EMPLOYEE ENGAGEMENT TO IMPROVE EMPLOYEE EXPERIENCE

Moderated by Echo Callaghan, **Researcher and Writer, WORKTECH Academy** with Meg Jarman, **Global Senior Manager; Digital Employee Engagement, McDonald's**, Andrew Vincent, **Senior HR Business Partner Domino's Pizza** and Ben Read, **Director of Employee Experience, MSL UK**



With unprecedented changes to society and the economy, how organisations engage with their employees has become critical to improving their employee's experience and allowing organizations to navigate disruption, transformation, and economic uncertainty. This panel explores various crucial aspects of today's modern workplaces. We examine how you can deliver a seamless workplace experience to increase employee brand connection and retain talent. How to cultivate a workplace environment that seamlessly integrates technology, fosters employee engagement, including deskless employees, and bolsters brand affinity. We uncover methods for not only retaining top talent but also forging a lasting bond between employees and their organizations

14:20 COFFEE AND NETWORKING

WORKPLACE EXPERIENCE

Companies are accelerating plans to invest in new technology, create flexible working environments and make the office a destination. We will examine the latest workplace technologies and innovations that will support workplace experience and the built environment in 2023 and beyond.

14:50 PANEL DEBATE: FUTURE WORKPLACE: DESIGNING HOLISTICALLY FOR ESG EXCELLENCE

Moderated by Linzi Cassells, [Design Director and Principal, Perkins and Will](#) with Rhian Windridge, [Workplace Programs Design Integration Team Lead, Google](#)

This panel explores various crucial aspects of today's modern workplace. It focuses on the practicalities and challenges organisations face in creating a culture and space for a multi-generational workforce, whilst also addressing environmental sustainability, fostering social inclusivity and robust governance practices.

Perkins&Will



15:25 EXPRESSING AND INCENTIVISING SUSTAINABLE PLACES

Ameera Kawash, [Co-Founder and Creative Director, Orbital Bloom](#) and Shira Wachsmann, [Artist & Co-founder & artistic director, Orbital Bloom](#)



This session examines an award-winning new means of gamifying buildings, in a public facing and interactive way, to transform them into more sustainable ecosystems. Merging real-time 3-D experiences with real-world climate challenges, Orbital Bloom is data-driven and place-based artwork that engages audiences in sustainability journeys. By intertwining sustainability data from physical systems with digital arts, it creates convergences between real and imaginary worlds that can positively impact people and the planet.

15:50 KEY CONFERENCE TAKE OUTS | PROJECTING GLOBAL TRENDS INTO THE FUTURE

Echo Callaghan, [Researcher and Writer](#) and Jeremy Myerson, [Director, WORKTECH Academy](#)

As we reach the culmination of our two-day conference this closing session will not only recap the highlights and pivotal discussions of the past two days but will also feature exclusive insights from the WORKTECH Academy's Global Trends. Gain a deeper understanding of the trajectory that the future holds for work and workplace dynamics and leave with a renewed perspective on the Future of Work, armed with actionable insights and a comprehensive understanding of the trends shaping the professional landscape.



16:15 CHAIRPERSON'S CLOSING REMARKS

Echo Callaghan, [Researcher and Writer, WORKTECH Academy](#)



16:25 NETWORKING DRINKS

17:30 DAY 2 CLOSES

OUR VENUE



Convене, 22 Bishopsgate, London

22 Bishopsgate is the tallest tower at the heart of the City of London's financial district. Shaped to respect townscape views, its twenty-three-sided, faceted glass form makes a strong and serene backdrop to the surrounding articulated towers and to the historic fabric of the Bank of England Conservation Area.

The building is infused with smart technologies, from the front door to the glass façade and everything in between. Opt-in facial recognition technology removes the hassle for staff entry and QR entry codes sent with visitors' meeting invitations render the reception desk queue redundant. Roving receptionists greet and assist if required.

22 Bishopsgate is designed with the individual's well-being in mind. Art and craft, higher ceilings, increased daylight control, better fresh air and amenities combine to support individuals, in traditional and new ways of working. Outside of office area, approximately 100,000 square foot is dedicated to facilities that aim to improve the everyday experience for the building's users and the public.

GETTING HERE

VENUE ADDRESS

22 Bishopsgate,
London,
EC2N 4AJ

PUBLIC TRANSPORTATION

The nearest tube stations to 22 Bishopsgate are:
Liverpool Street Underground – 7-minute walk
Monument – 7-minute walk

The nearest Train stations to 22 Bishopsgate are:
Fenchurch Street – 9-minute walk
Liverpool Street – 9-minute walk

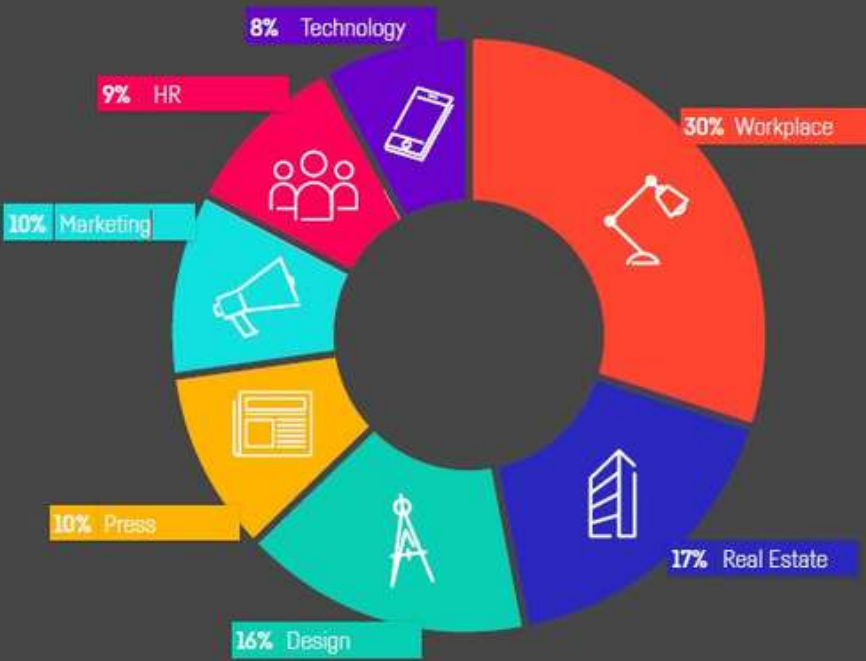
The nearest DLR Stations to 22 Bishopsgate are:
Bank – 7-minute walk

Bus Stations near 22 Bishopsgate:
Threadneedle Street (LN) -2-minute walk
Wormwood Street (Y) – 3-minute walk
Bishopsgate (R) – 4-minute walk
Bishopsgate (N) – 4-minute walk
All Hallows Church (U) – 6-minute walk

PARKING

There is 24hr paid parking available at an NCP car park located a 17-minute walk away, also with electric car charging points available. Please note there is a max height of 1.98m.

WHO ATTENDS



The choice of speakers was really inspiring offering great variety across a range of relevant topics.

DELEGATE, GSK



Informative, insightful, well planned, great speakers, something new every time!

DELEGATE, UNILEVER



BOOK NOW

www.worktechevents.com/events/worktech23-london/

KEY INFORMATION

Date & Venue

When: Tuesday 21st - Wednesday 22nd November 2023
Where: Convene, 22 Bishopsgate, London

How to book:

Visit: www.worktechevents.com/events/worktech23-london/

Offer a Special Rate to Your Network!

Become a marketing partner for this event and qualify for a special rate for your colleagues, complimentary passes for yourself, logo exposure for your organisation, and more!

If you are part of a group that would like to attend and are looking for a joint group rate please get in touch to arrange a bespoke ticket price.

Become a WORKTECH Ambassador

We're looking for people that love the future of work and the workplace and social media. People who are willing to become part of our team and help spread the word to the masses. There will be a free event ticket available to successful applicants. Apply here: <https://bit.ly/3jiHC4b>

For more information on the above initiatives, please contact: sally.adamson@worktechevents.co.uk



7 St. John's Mews
13 St. John's Road, Hampton Wick
Kingston upon Thames, KT1 4AN, UK

+44 (0)20 89 77 89 20
info@unwired.eu.com

www.worktechevents.com