

WORKTECH™

Auckland

WORK / WORKPLACE / TECHNOLOGY / INNOVATION

EXPLORE THE FUTURE OF WORK AND THE WORKPLACE

VENUE: B:HIVE, SMALES FARM

THURSDAY 30TH MARCH

09:00 - 16:30 NZDT

TWENTY YEARS OF
WORKTECH

20

EST. 2003

Hosted by

Sponsored by

SMALES
FARM

unispace

aspect

GALLUP®

GHDWOODHEAD
creativespaces

Supported by

forum
NEW ZEALAND
Te Kāhui Atamai Tahiko o Aotearoa

Leading
Solutions
Australia & New Zealand

unwork

WORKTECH™ ACADEMY



Conference Producer,
WORKTECH Events

A warm welcome to WORKTECH23 Auckland

WORKTECH is the fastest growing forum for all those involved in the future of work and the workplace as well as real estate, technology and innovation.

Never before has the workplace, and the way we work been so high on the agenda for organisations. As we make the great return to the office, how can organisations build engaging workplace experiences and cultures for their people?

You are invited to join 100+ senior professionals from real estate, facilities, HR, technology, executive management, architecture, design and professional advisors to listen to global thought leaders, and share best practice and expertise.

The conference will be run in one stream, which means our delegates will get to attend every speaker presentation. We will also have a curated innovation exhibition happening in the breakout areas for attendees to meet with our education partners, complementing learning throughout the day, as well as three networking breaks, creating time for attendees to meet the other participants

We hope you will be able to join us and we are looking forward to welcoming you to the event on 30th March.

Warmest regards,
Samantha

CONTENTS



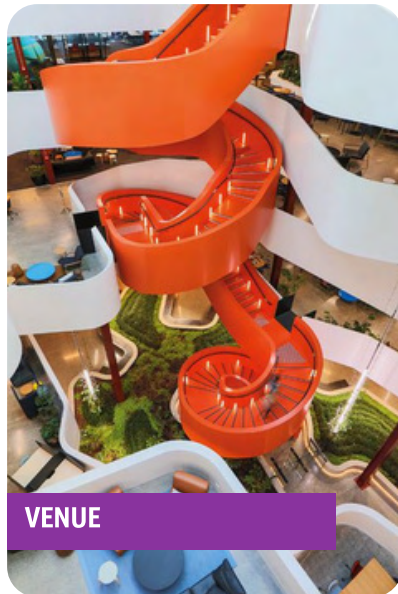
SPEAKERS



SESSIONS



CONFERENCE AGENDA



VENUE



WHO ATTENDS



KEY INFORMATION

MEET THE SPEAKERS

WORKTECH23 Auckland will attract some of the biggest and brightest names to debate, discuss, and divulge the latest thinking on the future of work and the workplace.

The conference will feature leading international thinkers from industry and academia. Our speakers represent some of the world's biggest brands and best universities and research departments, alongside radical visionaries from new innovative organisations.

Through interdisciplinary speakers and learning experience, we focus on bringing cutting edge ideas and inspiration to the workplace community to enhance creativity and move thinking forward. Instead of focusing on peer to peer innovation through imitation, we aim to curate a unique programme, bringing together experts in the fields of people, place and technology and relevant adjacencies to reflect on the future of work and workplace.

Alongside the conference series, the WORKTECH Academy knowledge hub explores the future of work through six key themes: people, place, technology, design, culture and innovation. Creating leading commentary, research and publications that places scientific research at the heart of key business problems. www.worktechacademy.com

Full list of speakers

Andrew Barnes, 4 Day Week
Rupert Brown, Experience Design (XD)
Aaron Taylor Harvey, Spaces Of
Nick Houldsworth, Ambit AI
Patricia Hubbard, Gallup
Bruce Jamieson, Tātaki Auckland Unlimited
Dr Lixin Jiang, University of Auckland
Daniel Kempka, Warren and Mahoney
Emma Kirkman, Anywhere Culture
Kristina Martin, BNZ
Leona Mehana, Auckland Council
Lena Mueller, Unispace
Ashlee Niuia Abraham, UCG
Dr Eziaku Onyeizu Rasheed, Massey University
Julie Rowe, Ghost Partners
Georgie Smith, FizzPopBANG
Kylie Telford, IANZ
Thomas Thurston, WR Hambrecht + Co
Darcy Utting, Unispace
Molly Workman, Air New Zealand



Andrew Barnes, 4 Day Week Global



Molly Workman, Air New Zealand



Dr Lixin Jiang, University of Auckland



Darcy Utting, Unispace



Lena Mueller, Unispace



Aaron Taylor Harvey, Spaces Of



Kristina Martin, BNZ



Ashlee Niuiā Abraham, UCG



Dr Eziaku Onyeizu Rasheed,
Massey University

CONFERENCE AGENDA

THURSDAY 30TH MARCH

VENUE: B:HIVE, SMALES FARM, 72 TAHAROTO ROAD

09:00 - 16:30 NZDT

CONFERENCE OPENS

09:00 CHAIRPERSON'S OPENING REMARKS

Emma Kirkman, Co-Founder, Anywhere Culture



09:15 A FOUR DAY FUTURE: THE CASE FOR A SHORTER WORKING WEEK

Andrew Barnes, Author, Founder of Perpetual Guardian, Architect of 4 Day Week Global



How will the flexible work revolution increase productivity, profitability and well-being, and contribute to a more sustainable future? Amidst global business and economic challenges, Andrew offers expert insights on why a 4 Day Week is important to our businesses, our communities, our families and the planet. In this presentation, Andrew Barnes will describe the background to 4 Day Week Global and the growing international four-day week movement, discuss the historical context to working time reduction, how the pandemic has disrupted societal and cultural norms, and in turn turbocharged demand. He will share the latest insights on the 4 day week global pilot program and discuss what this might mean for the future of work.

09:40 BUILDING RESILIENCE: WORKPLACES THAT EMBRACE THE UNKNOWN

Lena Mueller, Head of Strategy & Innovation, Unispace / Darcy Utting, Principal, Design, Unispace



In today's world, workplaces face a lot of challenges that can affect both the business and the individual. Unknowns like economic downturns, natural disasters, and pandemics can be stressful and disruptive for everyone. That's why it's essential to build a resilient workplace that can adapt and recover quickly, while keeping the well-being of its people at the forefront. Resilient workplaces support the well-being of their people, enhance culture, and are a genuine return on investment for business productivity and continuity. In this session, Principal of Strategy & Innovation, Lena Mueller, and Principal of Design, Darcy Utting share global data and insights as they explore ways to reimagine workplaces. Join us to learn practical strategies for creating a workplace that can adapt and thrive in the face of the unexpected.

10:15 NETWORKING & COFFEE BREAK

10:45 EXPERT PANEL: THE FUTURE OF WORKPLACE EXPERIENCE

Kristina Martin, Workplace Experience Manager, BNZ / Bruce Jamieson, Manager Workplace Experience, Tātaki Auckland Unlimited / Patricia Hubbard, Senior Consultant, Gallup / Georgie Smith, Managing Director, FizzPopBANG

This session explores how best to create optimal environments for employees to do their work, examining how cross-functional and human-centred approaches can be leveraged to make the office and greater workplace ecosystem more purposeful. How do we measure what is great? How do we successfully work across functional real estate, human resources (HR) and information technology (IT) to deliver it?



11:15 MANAGING WORKPLACE STRESS: WHAT WORKS AND WHAT DOESN'T WORK?

Dr Lixin Jiang, Organizational Psychologist and Senior Lecturer, University of Auckland



A significant proportion of workers report being exposed to numerous psychosocial risks at work. Exposure to work risks relates to increased health impairing behaviours, poor mental and physical health, and even death. In addition to their health implications, the annual cost of the burden of serious mental illness in New Zealand is estimated at \$12 billion. To improve employee well-being, health, and performance at work, organizational interventions have been developed. However, do they actually work? This session will discuss the current practices in managing workplace stress and whether they work and how and why they may or may not work.

11:40 PEOPLE, CULTURE AND THE HUMAN-CENTERED WORKPLACE

Molly Workman, Chapter Lead, People - Digital, Air New Zealand / Leona Mehana, Talent Acquisition Team Leader, People and Culture, Auckland Council / Ashlee Niua Abraham, People & Culture Partner, UCG / Kylie Telford, Head of People and Culture, IANZ

At work as in life, relationships are everything. Amid increasingly hybrid and distributed workforces, how can organizations continue to foster healthy cultures of meaningful connection and collaboration? This discussion explores the challenges and opportunities leaders face today and examines the importance of human-centric workplace strategies for building positive cultures, attracting and retaining top talent, empowering employees and fostering organizational wellbeing.



CONFERENCE AGENDA

THURSDAY 30TH MARCH

VENUE: B:HIVE, SMALES FARM, 72 TAHAROTO ROAD

09:00 - 16:30 NZDT

12:10 AIRBNB OFFICES: SERIOUSLY FUN AND SUDDENLY RELEVANT

Aaron Taylor Harvey, **Creative Director, Spaces Of**



The pandemic threw the typical office environment into stark relief. And the digital fluency / remote productivity of employees threatened its entire existence. Hybrid is the answer, but no one wants to work in a new way in the old space; they need something compelling to return to: they need a Destination, that's what we created at Airbnb, and this talk explores the elements of these spaces that can be recreated and reinterpreted to create the post-covid office all employees deserve.

12:45 NETWORKING & LUNCH BREAK

13:45 DESIGNING IN A NEW REALITY: THE DIGITAL INSTRUMENT FOR COLLABORATION

Rupert Brown, **Managing Director, Experience Design [XD]** / Daniel Kempka, **Senior Associate, Interior Designer, Warren and Mahoney**



WARREN AND MAHONEY

Senior Associate Interior Designer at Warren and Mahoney Daniel Kempka and Rupert Brown, Director of workplace technology consultancy Experience Design (XD) share how they are leveraging the latest technology in digital collaboration. These new approaches have dramatically reduced design time, improved collaboration between designers and the clients understanding of project outcomes. This fireside chat will explain what the technology is and how it's being implemented on a current project to design Precinct Properties new headquarters. Along with an outline on how you can leverage the same technology to better tackle any design challenge.

14:10 EXPERT PANEL: EMERGING TECHNOLOGIES RESHAPING THE WAY WE WORK

Thomas Thurston, **Chief Technology Officer, WR Hambrecht + Co** / Nick Houldsworth, **Director, Melodics Ltd and Chair, Ambit** / Julie Rowe, **Managing Director, Ghost Partners**

WR HAMBRECHT+CO



GH ST

In the age of the "anywhere office", technology will play a more vital role than ever. It is now crucial for businesses to leverage data to understand how people are using workspaces and implement technologies that will keep teams connected, organized, safe and ultimately enhance their experience and productivity. Our expert panel will share how some of the largest and most innovative global companies revolutionise how they use technology to improve their workplace ecosystems and attract and retain talent.

14:40 NETWORKING & COFFEE BREAK

15:10 INTERACTIVE GROUP DISCUSSION

Lena Mueller, **Head of Strategy & Innovation, Unispace**



Lena will facilitate an interactive session, offering the audience an opportunity to reflect on content shared throughout the day, discuss with peers, ask questions and gather real-time data.

15:25 THE FUTURE OF SMART AND SUSTAINABLE BUILT ENVIRONMENTS

Dr Eziaku Onyeizu Rasheed, **Senior Lecturer in Sustainable Built Environment, Massey University**



MASSEY UNIVERSITY
TE KUNENGA KI PUREHUROA
UNIVERSITY OF NEW ZEALAND

Indoor environmental quality (IEQ) in the workplace is critical to worker productivity. However, the feasibility of attaining a sustainable IEQ remains debatable as long as buildings continue to emit carbon and endanger occupants. Environmental sustainability is a concept that has been introduced previously, but it remains amongst the most actively discussed - with few impactful actions in the workplace. Significant disastrous events have dramatically increased recently, such as the impacts of COVID-19 on indoor environments. At the same time, there has been increasing empirical evidence of the benefits of a sustainable workplace, including energy efficiency, worker well-being and productivity. The time to act is now! Dr Rasheed will share her ideas on what needs to be done now and the latest works of her research group on workplace sustainability.

15:50 CHAIRPERSON'S CLOSING REMARKS

Emma Kirkman, **Co-Founder, Anywhere Culture**



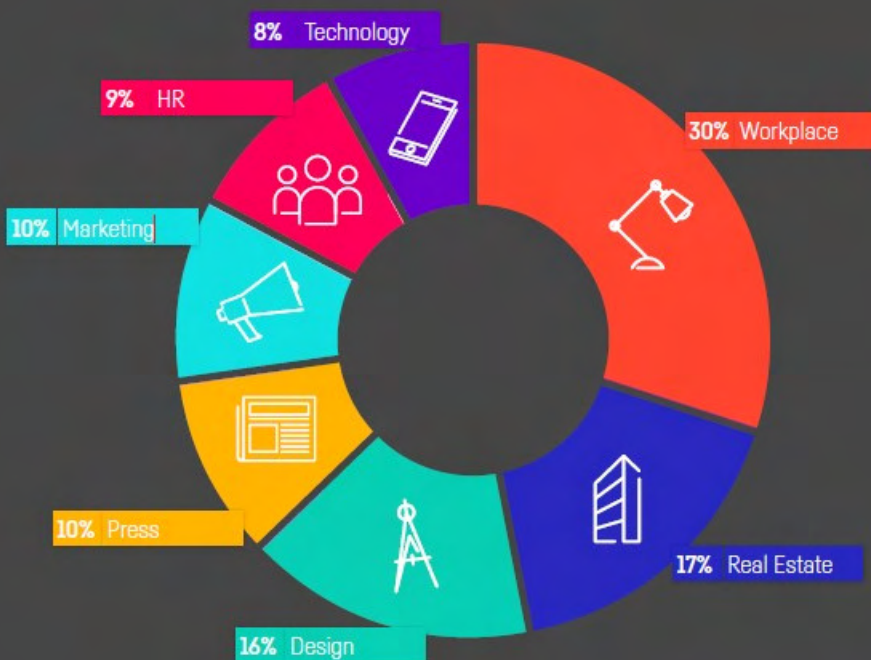
16:00 B:HIVE WORKPLACE TOURS

All attendees are invited to join an exclusive guided tour of the B:HIVE at the end of the conference.



16:30 CONFERENCE CLOSES

WHO ATTENDS



A well-spoken and experienced group of presenters providing leading edge subjects current topics and statistics. A great place to learn about new ideas.

WORKTECH DELEGATE, DELOITTE



Informative, interesting views on workplace design, planning technology and workers

WORKTECH DELEGATE, BANK OF MONTREAL

”



BOOK NOW

www.worktechevents.com/events/worktech23-auckland/

KEY INFORMATION

Date

When: Thursday, 30th March

Where: B:HIVE, Smales Farm

How to book:

Visit: www.worktechevents.com/events/worktech23-auckland/

Offer a Special Rate to Your Network!

Become a marketing partner for this event and qualify for a special rate for your colleagues, complimentary passes for yourself, logo exposure for your organisation, and more!

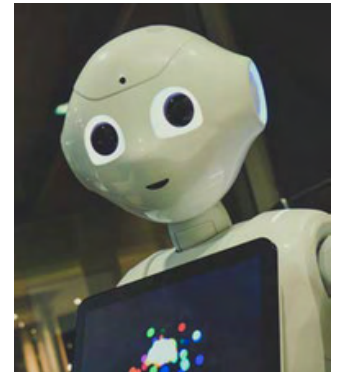
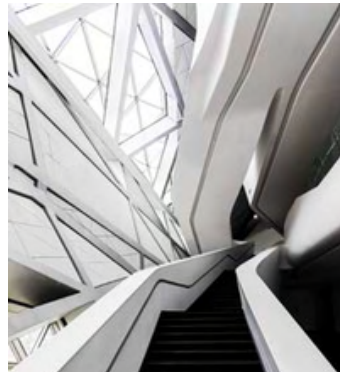
If you are part of a group that would like to attend and are looking for a joint group rate please get in touch to arrange a bespoke ticket price.

Become a WORKTECH Ambassador

We're looking for people that love the future of work and the workplace and social media. People who are willing to become part of our team and help spread the word to the masses. There will be a free event ticket available to successful applicants.

For more information on the above initiatives, please contact:

kirsty.darlington@worktechevents.co.uk



WORKTECH™

WORK / WORKPLACE / TECHNOLOGY / INNOVATION

7 St. John's Mews

13 St. John's Road, Hampton Wick

Kingston upon Thames, KT1 4AN, UK

+44 (0)20 89 77 89 20

info@unwired.eu.com

www.worktechevents.com