

WORKTECH™

Los Angeles

WORK / WORKPLACE / TECHNOLOGY / INNOVATION

EXPLORE THE FUTURE OF WORK AND THE WORKPLACE

SECOND HOME, 1370 N ST. ANDREW'S PL, HOLLYWOOD

TUESDAY NOVEMBER 15TH

09:00 - 16:30

EVENT SPONSORS

HOST PARTNER



GOLD SPONSORS



Freespace.

BRONZE SPONSOR



SUPPORTED BY



WORK DESIGN
MAGAZINE

WORKTECH ACADEMY





Conference Producer,
WORKTECH Events

A warm welcome to WORKTECH22 Los Angeles

WORKTECH is the fastest growing forum for all those involved in the future of work and the workplace as well as real estate, technology and innovation.

Never before has the workplace, and the way we work been so high on the agenda for organisations. As we make the great return to the office, how can organisations build engaging workplace experiences and cultures for their people?

You are invited to join 100 senior professionals from real estate, facilities, HR, technology, executive management, architecture, design and professional advisors to listen to global thought leaders, and share best practice and expertise.

The conference will be run in one stream, which means our delegates will get to attend every speaker presentation. We will also have a curated innovation exhibition happening in the breakout areas for attendees to meet with our education partners, complementing learning throughout the day, as well as three networking breaks, creating time for attendees to meet the other participants

We hope you will be able to join us and we are looking forward to welcoming you to the event on October 26th.

Warmest regards,
Samantha

CONTENTS



SPEAKERS



SESSSIONS



CONFERENCE AGENDA



VENUE



WHO ATTENDS



KEY INFORMATION

MEET THE SPEAKERS



WORKTECH22 Los Angeles will attract some of the biggest and brightest names to debate, discuss, and divulge the latest thinking on the future of work and the workplace.

The conference will feature leading international thinkers from industry and academia. Our speakers represent some of the world's biggest brands and best universities and research departments, alongside radical visionaries from new innovative organisations.

Through interdisciplinary speakers and learning experience, we focus on bringing cutting edge ideas and inspiration to the workplace community to enhance creativity and move thinking forward. Instead of focusing on peer to peer innovation through imitation, we aim to curate a unique programme, bringing together experts in the fields of people, place and technology and relevant adjacencies to reflect on the future of work and workplace.

Alongside the conference series, the WORKTECH Academy knowledge hub explores the future of work through six key themes: people, place, technology, design, culture and innovation. Creating leading commentary, research and publications that places scientific research at the heart of key business problems. www.worktechacademy.com

Full list of speakers

Dr. Burcin Becerik-Gerber **University of Southern California**
Brookes Broughton **The Walt Disney Company**
Dr. Agustin Chevez **University of Melbourne**
Sara Escobar **Riot Games**
Dani Gelfand **Studio O+A**
Niharika Hablani **Stripe**
Dr. Dustin Jackson **Cognizant**
Arnold Craig Levin **Gensler**
Matthew Myerson **WORKTECH Academy**
Yester Sabondzhyan **CBRE**
Valeria Sadovykh, Ph.D **Microsoft**
Ashley Schwedt **LifeLabs Learning**
Rohan Silva **Second Home**
Steve Turner **Freespace**
Clive Wilkinson **Clive Wilkinson Architects**
Genevieve Will **Gensler**
Amy Yin **Envoy**



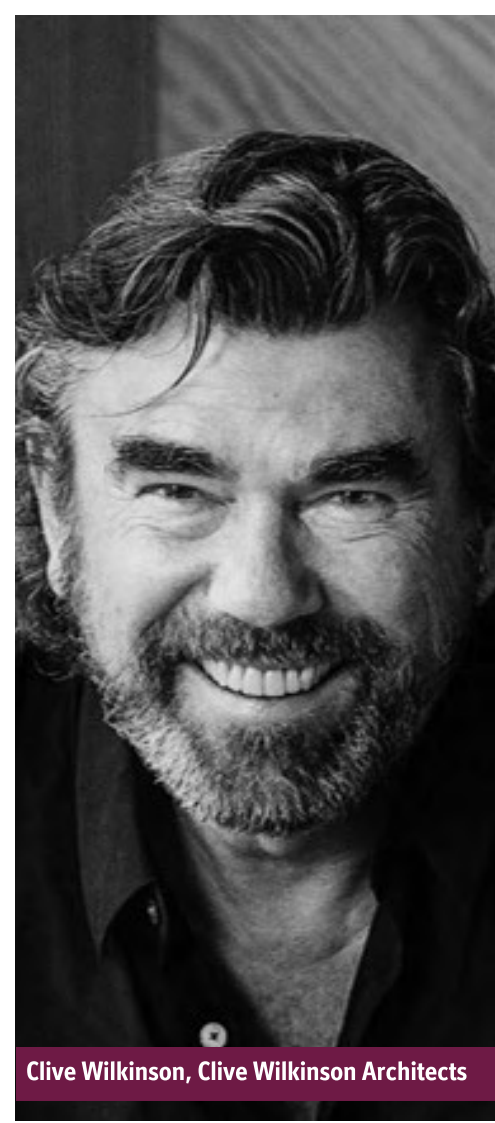
Dr. Dustin Jackson, Cognizant



Dr. Burcin Becerik-Gerber, University of Southern California



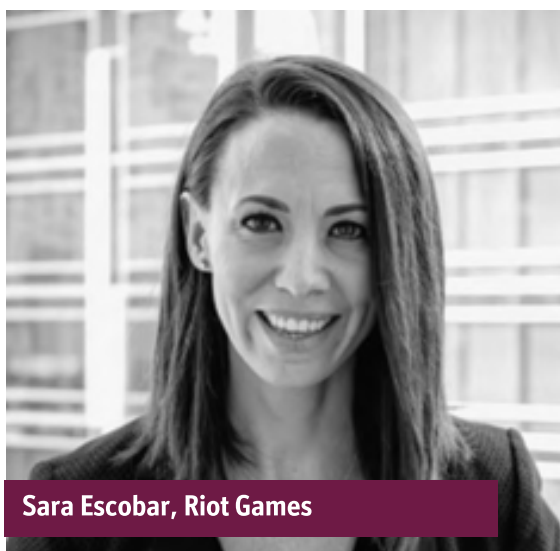
Dr. Agustin Chevez, The University of Melbourne



Clive Wilkinson, Clive Wilkinson Architects



Dani Gelfand, Studio 0+A



Sara Escobar, Riot Games



Amy Yin, Envoy



Valeria Sadovykh, Microsoft

SESSION HIGHLIGHTS

The future of work and the workplace is on everyone's agenda. This event brings thought leaders together to share cutting edge ideas on the future, from both a people, place, and technology perspective. It will allow an understanding of the key drivers of change and enablers of innovation that will shape how, where and when work takes place.

Key themes we will be discussing at this event include:

Work Disrupted: Challenges & Emerging Trends

The pandemic has been a catalyst of re-shaping and re-thinking a new world of work. We examine what's on the horizon for the future of work, looking at how business leaders should respond and what they should prioritize in the months ahead.

The Connected Workplace

In the age of the "anywhere office", technology will play a more vital role than ever. It is now crucial for businesses to understand how people are using workspaces and implement technologies that will keep teams connected, organized, safe and ultimately enhance their experience and productivity. Our experts will shed light on some of the key technology innovations that are transforming how people work.

People-Centric Workplace Strategies

How can companies make the office an attractive proposition to employees who now have more choice in where and how they work? We examine the post pandemic impact on work, space, buildings and the effects on employee and company productivity and well-being, behaviour and culture.

The Future of Commercial Real Estate & Urban Innovation in Los Angeles

What strategies are organisations adopting to bounce back from the coronavirus and what is the impact on the built environment, commercial real estate and urban innovations in LA?

KEY THEMES

WORK DISRUPTED: CHALLENGES & EMERGING TRENDS

THE CONNECTED WORKPLACE

PEOPLE-CENTRIC WORKPLACE STRATEGIES

THE FUTURE OF COMMERCIAL REAL ESTATE IN LOS ANGELES



Offices of the Future: Intelligent Workspaces that Support Well-Being and Productivity

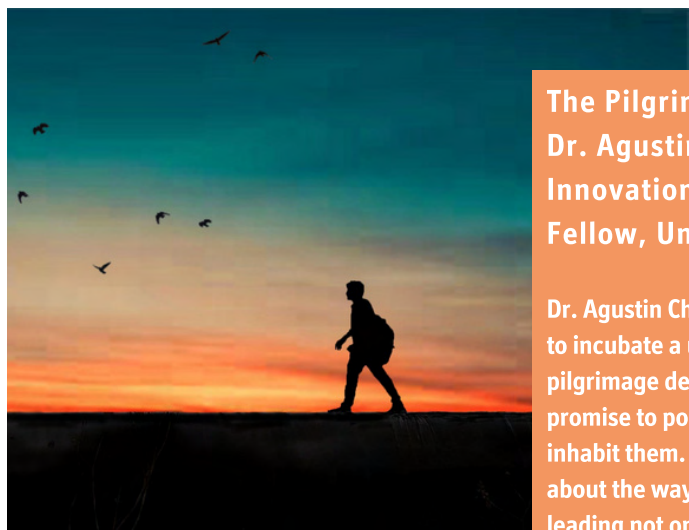
Dr. Burcin Becerik-Gerber, Director, Center for Intelligent Environments, University of Southern California

With the recent advancements in data science and artificial intelligence, we will have different experiences with our built environments. This inevitable change will impact our everyday experiences, causing novel interactions between humans and the built environment, including our workspaces. This talk will focus on CENTIENTS' (Center for Intelligent Environments) recent work on intelligent work environments that improve worker productivity while supporting worker health and well-being. We will cover a range of topics on the changing world of work including smart offices and intelligent buildings that sense user data, model user behavior, reason and interact with their users through the applications of AI and human-machine collaborations. The topics in this talk will cover work from home, smart office workstations that sense worker preferences, control office environmental conditions (e.g., thermal, indoor air quality, lighting, and noise) for promoting work performance and creativity, automate ergonomic assessments, and detect worker's stress and provide solutions for stress reduction and recovery.

The New Ideal Office in the Hybrid Era

Clive Wilkinson, FAIA, RIBA, IIDA President & Design Director, Clive Wilkinson Architects

For more than three decades, Clive Wilkinson has been among the most sought-after office designers in the world. Acknowledged as a global leader in workplace design, his large-scale projects for companies like Disney, Google, Macquarie Bank, FIDM, Microsoft and Nokia have established new paradigms for workplace. With the advent of Hybrid Working, we entered a new age of mobility and the pandemic validated the WFH (Work From Home) model. This brings home and office into the same category of complimentary workplace and lifestyle, freeing many in the workforce from challenges managing lives, roles and family demands. Offices can save over 20% in space, capital cost and utilities and devote resources to creating better, more supportive and exciting workplaces. With the high demand for talent empowering workers, this session will explore how the New Ideal Office must become a magnet for community to ensure its continued relevance.



The Pilgrim's Guide to the Workplace

Dr. Agustin Chevez, Adjunct Research Fellow, Centre for Design Innovation, Swinburne University of Technology, Honorary Fellow, University of Melbourne

Dr. Agustin Chevez walked in isolation for 42 days from Melbourne to Sydney expecting to incubate a unique idea about workplace design. Over a million steps later, his pilgrimage delivered unique insights which he refers to as Signposts – named for their promise to point to a better place to work for both, organisations and the people who inhabit them. In his talk, Agustin will take us in a journey that revisits our assumptions about the way we use space to host the ever-evolving notion of work – an expedition leading not only to better workplaces, but a better version of ourselves.

SECOND HOME, 1370 N ST. ANDREW'S PL, HOLLYWOOD

CONFERENCE OPENS

09:00 CHAIRPERSON'S OPENING REMARKS & WELCOME ADDRESS

Genevieve Will, **Senior Design Strategist, Gensler**

Rohan Silva, **Founder & CEO, Second Home**

Gensler



09:15 OPENING KEYNOTE: THE NEW IDEAL OFFICE IN THE HYBRID ERA

Clive Wilkinson, **FAIA, RIBA, IIDA President & Design Director, Clive Wilkinson Architects**



Acknowledged as a global leader in workplace design, Clive Wilkinson's large-scale projects for companies like Disney, Google, Macquarie Bank, FIDM, Microsoft and Nokia have established new paradigms for workplace. With the advent of Hybrid Working, we entered a new age of mobility and the pandemic validated the WFH (Work From Home) model. This brings home and office into the same category of complimentary workplace and lifestyle, freeing many in the workforce from challenges managing lives, roles and family demands. Offices can save over 20% in space, capital cost and utilities and devote resources to creating better, more supportive and exciting workplaces. With the high demand for talent empowering workers, this session will explore how the New Ideal Office must become a magnet for community to ensure its continued relevance.

09:45 EXPERT PANEL: THE FUTURE WORKPLACE & CORPORATE REAL ESTATE LANDSCAPE

Yester Sabondzhyan, **Senior Manager, Workplace Strategy, CBRE** / Sara Escobar, **Global Head of Real Estate and Workplace, Riot Games** / Brookes Broughton, **Regional Manager, Workplace Experience, The Walt Disney Company** / Niharika Hablani, **Program Manager, Global Real Estate & Workplace, Stripe**

As we look to the future, workplace and real estate strategies will continue to act as a tool to support existing employees and attract new ones. This panel will offer different perspectives on the discovery of workplace strategy and the challenges and opportunities faced by business leaders as they adapt their strategies to accommodate employee needs. Our experts will discuss latest trends and considerations, sharing insights across environmental elements that play a key role in shaping the experience of work and workplace as a destination.

CBRE



stripe

10:15 NETWORKING & COFFEE BREAK

11:00 OFFICES OF THE FUTURE: INTELLIGENT WORKSPACES THAT SUPPORT WELL-BEING AND PRODUCTIVITY

Dr. Burcin Becerik-Gerber, **Director, Center for Intelligent Environments, University of Southern California**



With the recent advancements in data science and artificial intelligence, we will have different experiences with our built environments. This inevitable change will impact our everyday experiences, causing novel interactions between humans and the built environment, including our workspaces. This talk will focus on CENTIENTS' (Center for Intelligent Environments) recent work on intelligent work environments that improve worker productivity while supporting worker health and well-being. We will cover a range of topics on the changing world of work including smart offices and intelligent buildings that sense user data, model user behavior, reason and interact with their users through the applications of AI and human-machine collaborations. The topics in this talk will cover work from home, smart office workstations that sense worker preferences, control office environmental conditions (e.g., thermal, indoor air quality, lighting, and noise) for promoting work performance and creativity, automate ergonomic assessments, and detect worker's stress and provide solutions for stress reduction and recovery.

SECOND HOME, 1370 N ST. ANDREW'S PL, HOLLYWOOD

11:30 EXPERT PANEL: THE INTELLIGENT & EXPERIENTIAL WORKPLACE

Matthew Myerson, **Development Director, WORKTECH Academy** / Valeria Sadovykh, **Ph.D., Technology Strategist, Microsoft** / Amy Yin, **Head of Rooms, Envoy** / Steve Turner, **Director of Sales, Freespace**



The age of the “anywhere office” has accelerated multiple workplace transformation trends that were already well underway before the onset of COVID-19. Workplace trends such as smart workplace technology integration, human experience enablement as well as the emergence of diverse ‘hybrid workplace’ behaviours – these workplace trends have now rapidly gained greater adoption, but many questions remain. Our panel will explore the emerging “Intelligent + Experiential” Workplace and what we can expect for the near term and longer term as we shape the future of work with the continued development and evolution of enterprise workplace ecosystems.

12:00 INTERACTIVE WORKSHOP: INCLUSIVE LEADERSHIP LAB

Ashley Schwedt, **Director of IDEA (Inclusion, Diversity, Equity and Anti-bias), LifeLabs Learning**



Inclusive leadership is synonymous with great leadership, but do the managers in your company know how to practice behaviors of inclusion? In this interactive mini-workshop, we'll share research on what makes inclusive leaders different. You'll learn skills to help managers leverage difference, make sure every voice is heard and create a space where people can be themselves and do their best work. You'll also leave with an assessment of inclusion at your company, simple micro-inclusion habits you can use immediately, and tips for gaining leadership buy-in.

12:30 NETWORKING & LUNCH BREAK

13:45 WHAT NEUROSCIENCE CAN TEACH US ABOUT THE GREAT OFFICE DEBATE

Dr. Dustin Jackson, **Organizational Psychologist, Associate Director, Transformation Advisory, Cognizant**



For many organizations, the reasons for employees to return to the office are rooted in logic. This logic includes: certain job functions must take place in the office, spontaneous collaboration and ingenuity can occur, and social interactions build a positive culture. But, many organizations are unaware that the human brain makes 95% of its decisions based on the subconscious. In this presentation, Dr. Dustin Jackson will use research and findings from psychology and neuroscience to analyze the office's impact on feelings of connectedness within the workplace.

14:15 A TALE OF TWO WORKPLACES: NEW DEFINITIONS, METRICS AND PERSPECTIVES SHAPING WORK AND PLACE

Arnold Craig Levin, **Co-Regional Consulting Practice Area Leader, Gensler**



Hybrid work has proved both a challenge and opportunity for many organizations. Many have embraced this as an opportunity to rethink and redefine the role of work and the place where work happens, while others have been challenged to find their way in this new environment, creating tales of two worlds of work. Defining performance metrics has also been a point of confusion, where traditional workplace metrics are no longer applicable. We will review two different organizations approach to the same problem and show how two very diverse perspectives on defining work and place provided diverse solutions resulting in two different world views. We will also present Gensler's latest research into new methodologies around measuring workplace performance that provide insightful metrics for those organization's adopting hybrid workplace strategies.

SECOND HOME, 1370 N ST. ANDREW'S, HOLLYWOOD

14:45 THE OTHER GREAT RESET: HOW EMPLOYEES ARE RESHAPING THE OFFICE

Dani Gelfand, **Design Director,**
Studio O+A



As companies determine what their offices will provide going forward, a new design partner is emerging: the employee. Dani Gelfand, Design Director at Studio O+A, talks about how priorities around wellness, diversity, sustainability, and inclusion are driving designs at some of the world's most influential workplaces. There's climate change in the work environment too.

15:15 THE PILGRIM'S GUIDE TO THE WORKPLACE

Dr. Agustin Chevez, **Adjunct Research Fellow,**
Centre for Design Innovation, Swinburne
University of Technology, Honorary Fellow,
University of Melbourne



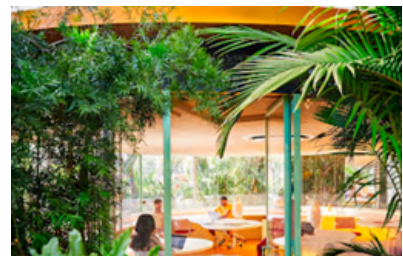
Dr. Agustin Chevez walked in isolation for 42 days from Melbourne to Sydney expecting to incubate a unique idea about workplace design. Over a million steps later, his pilgrimage delivered unique insights which he refers to as Signposts – named for their promise to point to a better place to work for both, organisations and the people who inhabit them. In his talk, Agustin will take us in a journey that revisits our assumptions about the way we use space to host the ever-evolving notion of work – an expedition leading not only to better workplaces, but a better version of ourselves.

15:45 CHAIRPERSON'S CLOSING REMARKS

Genevieve Will, **Senior Design Strategist, Gensler**

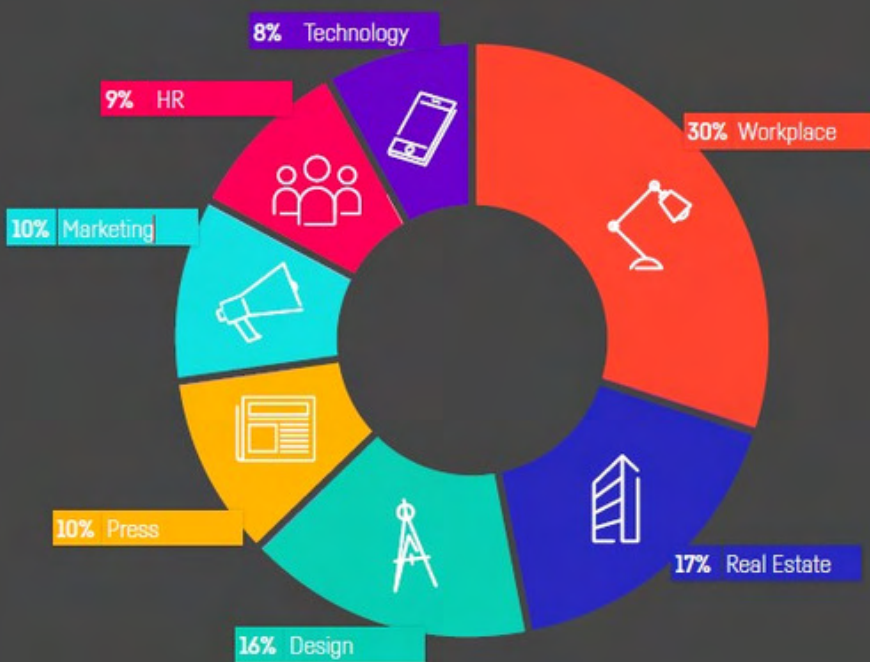
Gensler

16:00 SECOND HOME TOURS



16:30 CONFERENCE CLOSES

WHO ATTENDS



A well-spoken and experienced group of presenters providing leading edge subjects current topics and statistics. A great place to learn about new ideas.

WORKTECH DELEGATE, DELOITTE



Informative, interesting views on workplace design, planning technology and workers

WORKTECH DELEGATE, BANK OF MONTREAL



BOOK NOW

www.worktechevents.com/events/worktech22-los-angeles/

KEY INFORMATION

Date

When: Tuesday November 15th

Where: Second Home, 1370 N St. Andrew's Pl, Hollywood

How to book:

Visit: www.worktechevents.com/events/worktech22-los-angeles/

Offer a Special Rate to Your Network!

Become a marketing partner for this event and qualify for a special rate for your colleagues, complimentary passes for yourself, logo exposure for your organisation, and more!

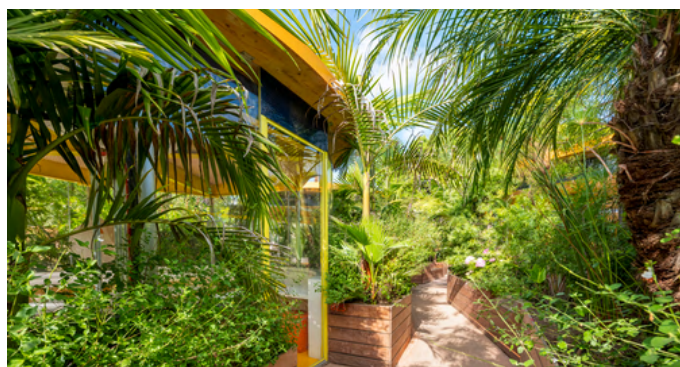
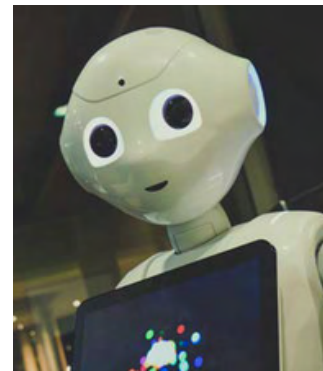
If you are part of a group that would like to attend and are looking for a joint group rate please get in touch to arrange a bespoke ticket price.

Become a WORKTECH Ambassador

We're looking for people that love the future of work and the workplace and social media. People who are willing to become part of our team and help spread the word to the masses. There will be a free event ticket available to successful applicants.

For more information on the above initiatives, please contact:

kirsty.darlington@worktechevents.co.uk



WORKTECH™

WORK / WORKPLACE / TECHNOLOGY / INNOVATION

7 St. John's Mews

13 St. John's Road, Hampton Wick

Kingston upon Thames, KT1 4AN, UK

+44 (0)20 89 77 89 20

info@unwired.eu.com

www.worktechevents.com