

WORKTECH™ 19

London

WORK / WORKPLACE / TECHNOLOGY / INNOVATION

EXPLORE THE FUTURE OF WORK AND THE WORKPLACE

CONFERENCE

WEDNESDAY 27TH & THURSDAY 28TH NOVEMBER

9:00 - 18:00

QUEEN ELIZABETH SOUTHBANK
CENTRE, BELVEDERE RD,
LAMBETH, LONDON SE1 8XX

<https://www.worktechevents.com/events/worktech19-london/>

EVENT SPONSORS





Caroline Bell

Managing Director, Unwired Ventures Ltd

A warm welcome to WORKTECH19 London

WORKTECH19 London is the fastest growing forum for all those involved in the future of work and the workplace as well as real estate, technology and innovation.

Never before has the workplace, and the way we work been so high on the agenda for organisations looking to improve productivity, attract and retain talent, and increase business return.

You are invited to join 320+ senior professionals from real estate, facilities, HR, technology, executive management, architecture, design and professional advisors to listen to global thought leaders, and share best practice and expertise.

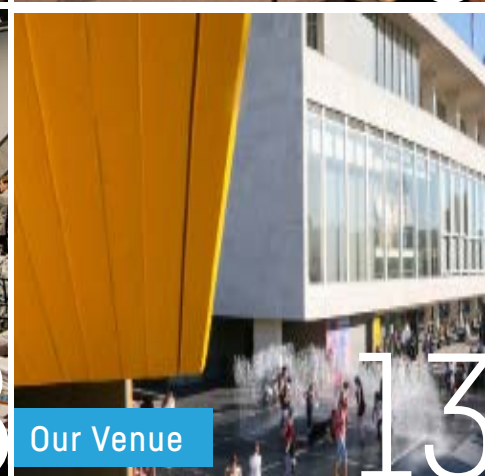
The conference will be run in one stream, which means our delegates will get to attend every speaker presentation. We will also have a curated innovation exhibition happening in the breakout areas for attendees to meet with our education partners, complementing learning throughout the day.

There will be three networking breaks, creating time for attendees to meet the other participants, and after the conference closes all delegates will have the opportunity to continue networking at the WORKTECH drinks reception in the conference space.

We hope you will be able to join us and we are looking forward to welcoming you to the event on the 27th & 28th November!

Warmest regards,
Caroline

Contents



MEET THE SPEAKERS



WORKTECH19 London will attract some of the biggest and brightest names to debate, discuss, and divulge the latest thinking on the future of work and the workplace.

The two days will feature over 25 speakers, including leading international thinkers from industry and academia. Our speakers represent some of the world's biggest brands and best universities and research departments, alongside radical visionaries from new innovative organisations.

Through interdisciplinary speakers and learning experience, we focus on bringing cutting edge ideas and inspiration to the workplace community to enhance creativity and move thinking forward. Instead of focusing on peer to peer innovation through imitation, we aim to curate a unique programme, bringing together experts in the fields of people, place and technology and relevant adjacencies to reflect on the future of work and workplace.

Alongside the conference series, the WORKTECH Academy knowledge hub explores the future of work through six key themes: people, place, technology, design, culture and innovation. Creating leading commentary, research and publications that places scientific research at the heart of key business problems. www.worktechacademy.com

Full list of speakers

Torin Douglas, [Writer and Ex-BBC Correspondent](#)

Matthew Taylor, [RSA](#)

Philip Ross, [Futurologist, Cordless Group & UNWORK](#)

Harald Becker, [Microsoft](#)

David Garson, [Office Freedom](#)

Mark Needham, [Cisco](#)

Jeremy Myerson, [WORKTECH Academy](#)

Adam Scott, [Freestate](#)

Dr Nelly Ben Hayoun, [Nelly Ben Hayoun Studios](#)

Lars-Gunnar Lundgren, [Sony](#)

Richard Garrett, [Signify](#)

Patrick Marsh, [GSK](#)

Katie Viridi, [GSK](#)

Dr Paul Smith, [Art Health Solutions](#)

Alex Moon, [Spica Technologies Ltd](#)

Devinder Bhogal, [Deloitte LLP](#)

Doron Shachar, [PointGrab](#)

Gianluca Poltera, [Locatee](#)

Sarie Cooplestone, [Cloudbooking](#)

Gerry Brennan, [Cloudbooking](#)

Mikhail Tokarczyk, [Viacom](#)

Tim Coles, [Hitachi Rail](#)

General Stanley McChrystal, [The McChrystal Group](#)

Bruce Daisley, [EMEA Twitter](#)

Sir David Adjaye, [Adjaye Associates](#)

Olly Olsen, [TOG](#)

Jennifer Celesia, [Haworth](#)

Leeson Medhurst, [360 Design](#)

Tim Yendell, [RBS](#)

Elisa Rönkä, [Siemens](#)

Mark Williams, [Barings](#)

John Cowx, [PwC](#)

James Fellowes, [PwC](#)

John Cowx, [PwC](#)

Peter Otto, [Condeco](#)

Neil Rodel, [Macquarie Group](#)

Richard Morris, [IWG](#)

Richard Watson, [Author](#)



General Stanley McChrystal, The McChrystal Group



David Adjaye, Architect, Adjaye Associates



Jeremy Myerson, Director, WORKTECH Academy



Devinder Bhogal, Head of Workplace



Dr Nelly Ben Hayoun, Designer of Experiences, Nelly Ben Hayoun Studios



Matthew Taylor, Chief Executive at RSA



Richard Watson, Author, Now & Next, Futurist



Bruce Daisley, VP, EMEA Twitter



SESSION HIGHLIGHTS

The future of work and the workplace is on everyone's agenda. This event brings thought leaders together to share cutting edge ideas on the future, from both a people, place, and technology perspective. It will allow an understanding of the key drivers of change and enablers of innovation that will shape how, where and when work takes place.

KEY THEMES

The Sentient Workplace

Four Futures of Work

Science of the Workplace

The Future of Work in World Cities

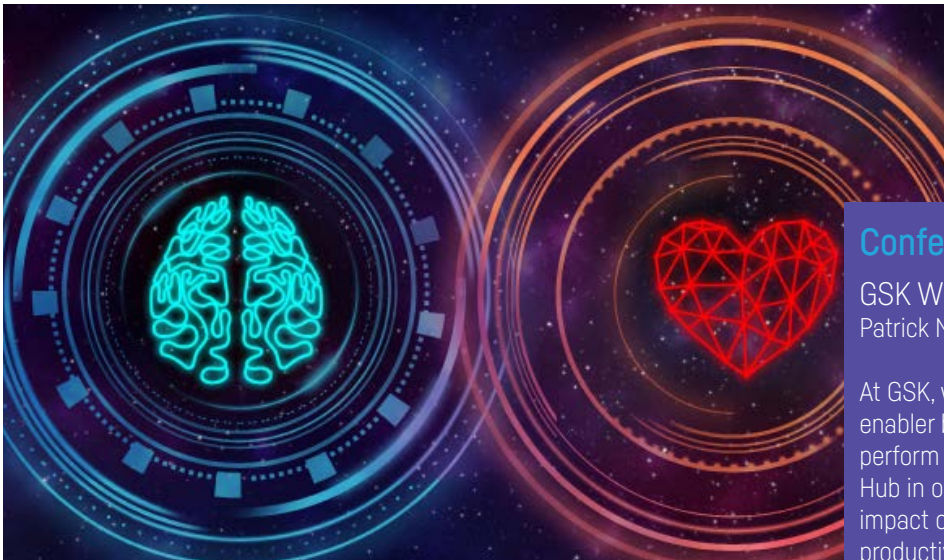
Key themes we will be discussing at this event include:

THE SENTIENT WORKPLACE | We will explore how the workplace will drive smart decisions and where companies will realise benefits as the battle of talent intensifies and focus shifts to contextualised employee experience and computerised technology.

FOUR FUTURES OF WORK | As the UK continues to wrestle with an uncertain economic and trading relationship with the rest of Europe the RSA have modelled four different scenarios for the future of work.

SCIENCE OF THE WORKPLACE | We will explore how the workplace is directly impactful not only on our productivity but more importantly our health.

THE FUTURE OF WORK IN WORLD CITIES | When architecture becomes 'stale' it has a negative impact on the quality and distinctiveness of the cityscape. We will explore the crucial role architecture plays in world cities and the need for a holistic approach to the built environment.



Conference

GSK Workplace Performance Hub
Patrick Marsh, Director, Worldwide Real Estate at GSK

At GSK, we believe that the workplace should be a health enabler because when we feel at our best, we perform at our best. We have built a Workplace Performance Hub in our HQ and with our own people we are testing the impact of the workspace on wellbeing, satisfaction and productivity.

Conference

In Conversation: Creating Spaces At 1 New Street Square
Will Esplen, Managing Director, Global Real Estate and Workplace Strategy

Will Esplen will take you on the journey of the Deloitte's workplace transformation in the UK and Switzerland. He will share how Deloitte has not only changed the space, but the entire workplace strategy, revolutionising the space to reflect and positively impact the changing work environment. This session will evaluate the impact and outcomes from smart buildings and explore Deloitte's journey to new ways of working.



Conference

You Are Not Busy
Richard Watson, Author, Now and Next, Future Files

Richard will explore the idea that work is the last place people have good ideas. If this is the case can there be an argument for working from offices and not from home?

DAY 1

09:00 Chair's Welcome

09:10 Poetry

Matt Harvey,
WORKTECH Poet in residence



Poet, columnist, enemy of all that's difficult and upsetting. Matt's way with words has taken him from Totnes to the All England Tennis Club via Radio 4's Saturday Live, The Edinburgh Festival and the work section of the Guardian.

Changing Work - The Big Picture

#innovation #architecture #tech

09:15 Four Futures Of Work

Matthew Taylor,
Chief Executive at RSA



As the UK continues to wrestle with an uncertain economic and trading relationship with the rest of Europe, a new report from the RSA's Future Work Centre has modelled four different scenarios for the future of work in 2035. The Big Tech Economy, The Precision Economy, The Exodus Economy & The Empathy Economy. Each scenario has positive and negative aspects, reflecting increasingly widespread scepticism about what new technologies will bring to the global workplace in terms of rewards, job security and societal gain.

09:45 The Sentient Workplace

Philip Ross,
Futurologist & CEO, Cordless Group & UnWork, Author of Space to Work



Sentience is the capacity to feel, perceive or experience subjectively. The sentient workplace will explore the enablers behind this trend, how it will drive smart decisions and where companies will realise benefits as the battle of talent intensifies and focus shifts to contextualised employee experience and computerised technology.

10:00 Harnessing Human Energy Around Shared Purpose

Harald Becker,
Director Industry Engagement & Research,
Microsoft



Effective, resilient organizations, the ones that will survive the turbulent next decade, will be the ones that can constantly metabolize real-time incoming information. They have the capacity to learn fast and can respond by constantly finetuning and fluidly reforming themselves. At Microsoft, we believe the best way to unlock this is by harnessing human energy around shared purpose, by amplifying human ingenuity and leveraging the human network!

10:25 Coffee Break

10:55 Welcome Back

10:55 Office Freedom Innovation Platform

Super Experience

#innovation #architecture #tech

11:00 Cognitive Collaboration

Mark Needham,
Webex and Workplace Transformation
Lead, Cisco



Think about how the way your work has evolved. Chances are it's no longer 9 to 5. And it's not all in one office. Work today requires collaboration and involves teams spread across time zones. Organisations everywhere are seeking stronger employee engagement and customer experiences to enable more productivity and greater business agility. More effective collaboration helps organisations work smarter. Cisco will share the latest thinking on these workplace trends.

11:25 The Super Experience

Jeremy Myerson [Director, WORKTECH Academy & Research Professor, Royal College of Art](#) / Adam Scott, [Founder of global Experience Masterplanning agency, FreeState](#)

As the ante is upped in providing more and better workplace experiences, so we are entering the era of Super Experience. This session explores the impact of Experience Design on the property industry and offers tips on activating the Super Experience. These include taking a people first approach, offering a more flexible portfolio of experiences and curating new skills and new technologies.



11:55 A Monster At Work

Dr Nelly Ben Hayoun, [Designer of Experiences, Nelly Ben Hayoun Studios](#)

As she just returned from travelling to four continents and beyond 14 cities in one month with the hope of bringing back the origin of knowledge in her suitcase, the Willy Wonka of Design and Science-Dr. Ben Hayoun - will stop by WORKTECH to share mysteries behind her practice and production of the impossible, but also her experience performing and reenacting the life of political theorist Hannah Arendt.



12:25 Welcome to Lunch: Fooditude

12:30 Lunch Break

13:30 Welcome back

Science Of The Workplace

#innovation #architecture #tech

13:35 Digital tools in the modern workplace

Lars-Gunnar Lundgren, [Head of Nimway, Sony](#)

Whether it is a question of reducing downtime or optimising systems in order to save time and money, IoT is rapidly impacting on all aspects of our business lives. It is not possible or indeed desirable to fight such a widespread revolution in business, which means that management should embrace development so as not to fall behind. Smart offices and agile workstyles mean higher profits, more satisfied employees and better companies.



13:55 The Power Of Light

Richard Garrett, [Solutions Specialist, Signify](#)

Evidence is growing that light doesn't just help us see – it impacts how we feel and behave. Human-centric lighting (HCL) aims to use the power of light to improve how we live and work. By tuning light to support our circadian rhythms and emotional needs, we can promote human comfort, wellbeing and performance.



14:15 Data Insights: GSK Workplace Performance Hub

Patrick Marsh, [Director Real Estate and Asset Management EMEA, Worldwide Real Estate, GSK/Katie Viridi, Employee Productivity Strategy Director, Strategy & Tech Transformation, GSK/Dr Paul Smith, Chief Strategy Officer, Art Health Solutions](#)

At GSK, we believe that the workplace should be a health enabler because when we feel at our best, we perform at our best. We have built a Workplace Performance Hub in our HQ and with our own people, we are testing the impact of the workspace on wellbeing, satisfaction and productivity.. Many programs fail to integrate office design & environment into health & wellbeing strategy, bypassing enormous opportunity to positively impact employee health. Using case study data, we demonstrate how objective evaluation of your working environment influences employee health, wellbeing & performance.



14:45 Coffee Break

15:15 Welcome Back

Smarter Spaces

#innovation #architecture #tech

15:20 Be The Place For Productive & Positive Minds

Alex Moon,
Global Account Manager, Spica
Technologies Ltd



Employee workplace experiences, not physical assets, are disrupting real estate. Corporate workplaces are now needing to create a high performing agile culture, in a rigid complex workplace. This session will explore how organisations can make their physical assets smarter using a holistic approach to systems integrations & IoT ultimately to provide a frictionless workplace experience. Improve your workplace culture by understanding the behavioural data and empowering employees to effortlessly interact with their environment.

15:35 In Conversation: Creating Spaces At 1 New St Square

Devinder Bhogal, Head of Workplace
Strategy, Deloitte LLP, Doron Shachar, CEO,
PointGrab, Philip Ross,
Futurologist & CEO, Cordless Group &
UnWork

Deloitte.



Deloitte will take you on the journey of their workplace transformation in the UK and Switzerland. Devinder will share how Deloitte has not only changed the space, but the entire workplace strategy, revolutionising the space to reflect and positively impact the changing work environment. This session will evaluate the impact and outcomes from smart buildings and explore Deloitte's journey to new ways of working.

16:05 Space Utilization: Best Practice EY, Swiss RE, Zurich Insurance

Gianluca Poltera,
Technology Lead, Locatee



Large organizations are generating high added value in terms of operational efficiency and employee satisfaction throughout its real estate portfolio, by relying on real time occupancy insights. Experience best practice examples from leading companies.

16:25 Expert Panel: Smart Workspaces - The Future of Data-driven Workplaces

Sarie Coplestone, Director of Client
Services, Cloudbooking, Gerry Brennan,
Founder & CEO, Cloudbooking, Mikhail
Tokarczyk, VP Technology UK, Northern and
Eastern Europe, Viacom, Tim Coles, Global
Chief Information Officer, Hitachi Rail



Tech-enabled workspaces create and hold an extremely valuable commodity which has the power to make them even more efficient – data. Cloudbooking will bring together experts from the technology and data-led industries to discuss whether organisations are effectively accessing, analysing and utilising the vast amount of workspace data available to them. What role does data-driven decision making have in establishing and informing key metrics for business success?

16:55 'Leadership is not what you think it is - and it never was'

General Stanley McChrystal,
Partner & founder at the McChrystal
Group, Former top commander of U.S. and
International Forces in Afghanistan



Gen. Stanley McChrystal retired as a four-star general after serving nearly four decades in the U.S. Army. During that time he worked with countless leaders, at every level of effectiveness, and pondered an ancient question: "What makes a leader great?" coming to realize there is no simple answer. Since retiring from the army he has taught leadership courses at Yale University, joined the boards of various private companies and non-profits and authored three books. He joins us at #WORKTECH London to explore the 'myths and realities' of what makes a great leader.

17:20 Closing Remarks

17:35 Conference Closes & Networking Drinks

DAY 2

09:00 Chair's Welcome

09:10 Poetry

Matt Harvey,
WORKTECH Poet in residence



Poet, columnist, enemy of all that's difficult and upsetting. Matt's way with words has taken him from Totnes to the All England Tennis Club via Radio 4's Saturday Live, The Edinburgh Festival and the work section of the Guardian

The Future Of Work In World Cities

#innovation #architecture #tech

09:15 Re-Engineering Work For The Future

Bruce Daisley,
VP – EMEA, Twitter



Fuelled by his Sunday Times number 1 best seller, The Joy of Work, Bruce challenges some of the norms of work and demands that we ask ourselves how is the way we're working, not working?

09:55 In Conversation: The Power Of Architecture In World Cities

Sir David Adjaye,
Founder & Principal Architect, Adjaye Associates / Jeremy Myerson Director,
WORKTECH Academy & Research
Professor, Royal College of Art

Adjaye Associates



In 2016 Sir David Adjaye received a knighthood and was the only architect to make Time magazine's list of the world's 100 most influential people. While passionate about the transformational role of architecture, David is dismayed by the marginalisation of architects to a 'vener stylist' role within construction. Often the result of this is 'stale' architecture, which has a negative effect on the quality and distinctiveness of the cityscape. David will explore the crucial role architecture plays in world cities and the need for a holistic approach to the built environment.

10:25 Coffee Break

10:55 Welcome Back

New Ways Of Working

#innovation #architecture #tech

11:00 The New Frontier in Flexible Workspace

Olly Olsen, Co-Founder and Co-CEO, The Office Group / Jeremy Myerson Director,
WORKTECH Academy & Research
Professor, Royal College of Art



While the flex space market is maturing rapidly, the dominant offerings - coworking and the serviced office - still have their limitations. Co-founder and Co-CEO of The Office Group, Olly Olsen will be challenging the flex sector to re-imagine, shape and improve the way people work through embracing emerging innovations and a new 'third dimension' model.

11:20 (Re)Defining The Workplace Experience

Jennifer Celesia,
Senior Workplace Strategist, Haworth



"Experience" is the new workplace metric - but how does a global organisation create a consistent and effective workplace experience across geographies, offices, and real estate models? We will share new tools and case studies where organisations challenged their assumptions, experimented with new real estate models, and integrated technology into their planning and fit-out process to transform the way they develop, design, and evolve their global workplace strategies.

11:40 New Research: Designing For New-Generation LeadershipLeeson Medhurst, [Director, 360 Workplace](#)

How can workplace design flex and adapt to support new styles of leadership amid rapid organisational change? This panel will discuss the findings of a new report co-authored by 360 Workplace, WORKTECH Academy and the United Workplace which examines ways in which leadership strategy and designing for the high-performance workplace can enjoy a more symbiotic relationship.

12:00 Case Study: RBS' New Co-WorkingTim Yendell,
[Head of Choice, Design & Moves, RBS](#)

As the world of co-working continues to grow at an even faster pace, what do corporates do if they want to build it for themselves? Tim will be sharing some insights and learnings from his collaboration with Californian based co-working business 'RocketSpace' about the creation of their new London campus and using those learnings in the creation of their own newly opened 'Living Rooms' space in their London headquarters.

12:25 Welcome to Lunch: Fooditude**12:35 Lunch Break****13:35 Welcome Back****New Thinking For Workspaces**

#innovation #architecture #tech

13:40 Case Study: How Buildings Actively Contribute to Business SuccessElisa Rönkä, [Head of Smart Office Europe, Siemens](#) / [Mark Williams, Head of Business Services, Barings](#)

Buildings are no longer passive assets. Instead, they are interfaces between people, processes and services and should be treated as active contributors in business success. A real use case from Barings explains how office buildings function as a platform for experience by offering a smart environment and people-centric solutions.

14:00 Case Study: PwC's Living PortfolioJohn Cowx [Workplace Experience \(IT\)](#) / [James Fellowes Workplace Experience \(Real Estate\)](#)

'Intelligent Digital' and technology enablement is core to PwC. Internally, traditional projects are being replaced with evolving workplace strategies. In this unpredictable world where agility and reacting to change quickly is essential, understanding in real time how their property portfolio is performing and using technology to solve real business 'problems' are key enablers in the management of PwC's 'Living Portfolio'.

14:20 Panel Debate: Future SpacesPhilip Ross, [Futurologist & CEO, Cordless Group & UnWork](#), [Author of Space to Work](#) / [Peter Otto, Chief Product Officer, Condeco](#) / [Neil Rodel, EMEA CIO and Head of Business Services, Macquarie Group](#)

Philip is joined by Peter Otto and Neil Rodel to debate the future of office space in this ever evolving world.

**14:50 Coffee Break****15:20 Welcome Back**

Shaping The Employee Experience

#innovation #architecture #tech

15:20 Flexible Working: The Future Of The Modern Workplace

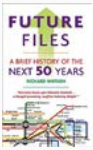
Richard Morris,
UK CEO, IWG



The world of work is changing fast, with recent predictions suggesting that up to 30 percent of corporate real estate portfolios could be flexible workspace by 2030. Richard will speak about the growing trend towards flexible working, its business benefits and why so many see it as the future of the workplace.

15:40 You Are Not Busy

Richard Watson,
Author, *Now and Next, Future Files*



Futurist-in-Residence to the Technology Foresight Practice at Imperial College, and the founder of nowandnext.com a website that documents global trends, Richard is an expert on all aspects of the future. He has worked with some of the world's most impressive corporations, including Ministry of Defence, London Business School, McDonald's, Virgin, IBM, KPMG, Arla Foods, General Electric, and Cambridge University. Richard will be joining us at WORKTECH to explore the idea that work is the last place people have good ideas. If this is the case can there be an argument for working from offices and not from home?

16:10 Closing Remarks

16:20 Conference Closes & Networking Drinks

OUR VENUE



Queen Elizabeth Southbank Centre

Queen Elizabeth Hall reopened in April 2018 following almost three years of renovations with world class, environmentally-improved new facilities for audiences and artists. The building is also home to Purcell Room—a smaller, more intimate space.

The building was originally opened in March 1967 by Her Majesty the Queen and this historic restoration has been made possible through generous support from Arts Council England and the Heritage Lottery Fund, thanks to National Lottery players, and through Southbank Centre friends, trusts and foundations supporting the Let The Light In campaign.

GETTING HERE

Address:

Purcell Room
Southbank Centre, Belvedere Rd,
Lambeth, London
SE1 8XX

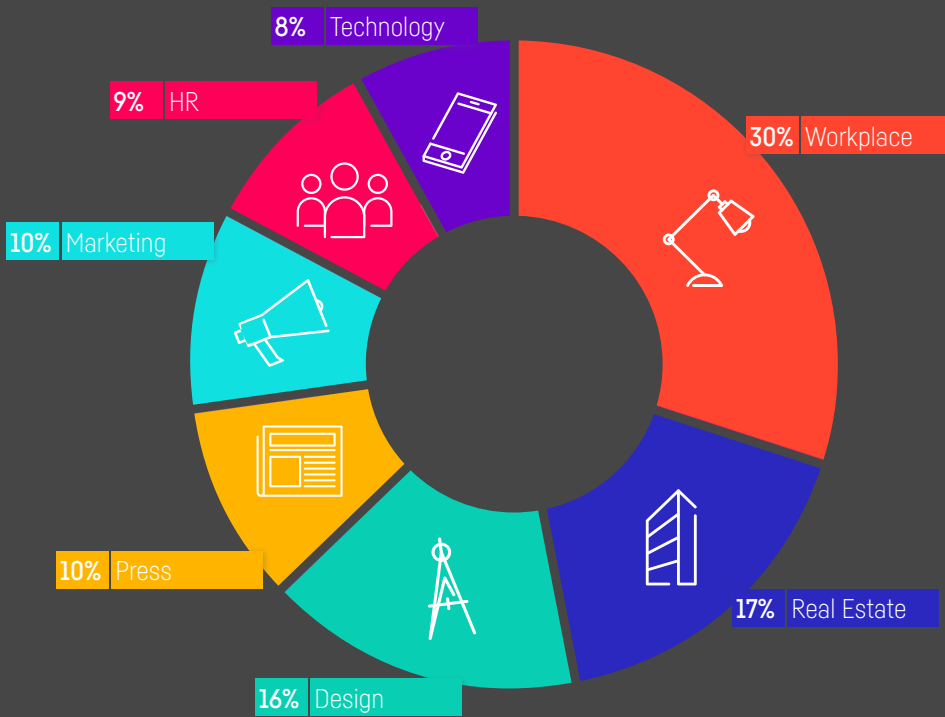
By tube / train:

The Southbank Centre is located just 200 metres from Waterloo train and underground station (Northern, Bakerloo, Jubilee and Waterloo & City Lines), and 600 metres from Embankment underground station (District & Circle Lines). Waterloo East, Charring Cross and Blackfriars are also all within walking distance from the venue. Plan your journey and find more information at: www.tfl.gov.uk

By Bus

RV1 stops on Belvedere road (less than a minute's walk away from the venue). Alternatively, routes 1, 4, 26, 59, 68, 139, 168, 171, 172, 176, 188, 23, 521, N1, N68 and N43 stop at Waterloo Bridge, which is within five minutes' walk from the Southbank Centre. Additional public transport routes can be found here: www.southbankcentre.co.uk

WHO ATTENDS



Informative, eye-opening and worthwhile

DELEGATE, LEGO



Informative, insightful, well planned, great speakers, something new every time!

DELEGATE, UNILEVER



BOOK NOW FOR EARLY BIRD RATE

Super Early Bird: £499 until May 31st

Early Bird: £649 until July 22nd

Standard: £849

For booking please visit www.unwired.eu.com/worktech19/london

Key information

When: Wednesday 27th & Thursday 28th November 2019

Where: Purcell Room, Southbank Centre, Belvedere Rd, Lambeth, London, SE1 8XX

Phone: 020 8977 8920

How to book:

Visit: www.unwired.eu.com/worktech19/london

Email: Hanako.littlewood@unwired.eu.com

Offer a Special Rate to Your Network!

Become a marketing partner for this event and qualify for a special rate for your colleagues, complimentary passes for yourself, logo exposure for your organization, and more!

If you are part of a group that would like to attend and are looking for a joint group rate please get in touch to arrange a bespoke ticket price.

Become a WORKTECH Ambassador

We're looking for people that love the future of work and the workplace and social media. People who are willing to become part of our team and help spread the word to the masses. There will be a free event ticket available to successful applicants.

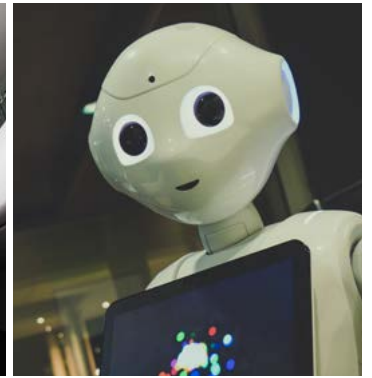
For more information on the above initiatives, please contact: emma.askew@unwired.eu.com



7 St. John's Mews, 13 St. John's Road, Hampton Wick, Kingston upon Thames, KT1 4AN, UK

Tel: 020 89 77 89 20
info@unwired.eu.com

www.unwired.eu.com



[@unwired](https://twitter.com/unwired) [#WORKTECH](https://twitter.com/WORKTECH)